



HOULIHAN
CAPITAL

Value. Added.



Industry Observations – March 31, 2019

Consumer Products Industry

Select Consumer Products Public Company Industry Data As of March 31, 2019

(USD in millions, except per share data)

Company Name	Ticker	Market Data					LTM Operating Data			Forward Estimates	
		Price at 03/31/19	% of 52 Week High	Equity Value	Enterprise Value	Debt / Total Capital	Total Assets	LTM Revenue	LTM EBITDA	CY 2019 Revenue Estimate	CY 2019 EBITDA Estimate
Consumer Durables											
Ethan Allen Interiors Inc.	ETH	\$19.13	74.9%	\$508.47	\$495.58	0.4%	\$534.49	\$771.94	\$67.42	\$777.89	\$73.61
La-Z-Boy Incorporated	LZB	\$32.99	84.3%	\$1,539.30	\$1,497.92	2.9%	\$1,061.46	\$1,711.64	\$163.74	\$1,841.80	\$175.17
Leggett & Platt, Incorporated	LEG	\$42.22	90.4%	\$5,540.18	\$6,579.46	50.2%	\$3,382.00	\$4,269.50	\$573.80	\$5,003.60	\$763.27
Mohawk Industries, Inc.	MHK	\$126.15	51.0%	\$9,121.89	\$12,688.19	30.5%	\$13,099.12	\$9,983.63	\$1,711.14	\$10,359.45	\$1,653.89
Tempur Sealy International, Inc.	TPX	\$57.67	96.6%	\$3,155.45	\$4,954.63	88.3%	\$2,715.40	\$2,702.90	\$338.10	\$2,831.27	\$457.86
Whirlpool Corporation	WHR	\$132.89	79.3%	\$8,454.62	\$14,290.17	65.3%	\$18,347.00	\$21,037.00	\$1,906.00	\$20,295.56	\$1,990.92
Household Products											
Church & Dwight Co., Inc.	CHD	\$71.23	98.7%	\$17,517.80	\$19,954.63	46.3%	\$6,069.20	\$4,145.90	\$932.80	\$4,312.37	\$994.47
Colgate-Palmolive Company	CL	\$68.54	94.4%	\$58,931.41	\$65,565.86	97.0%	\$12,161.00	\$15,544.00	\$4,269.00	\$15,604.48	\$4,203.89
Energizer Holdings, Inc.	ENR	\$44.93	68.5%	\$3,139.47	\$4,096.82	94.9%	\$4,416.10	\$1,796.30	\$369.10	\$2,746.31	\$598.52
Kimberly-Clark Corporation	KMB	\$123.90	99.5%	\$42,635.15	\$49,735.71	100.6%	\$14,518.00	\$18,486.00	\$3,863.00	\$18,377.87	\$4,077.47
Libbey Inc.	LEBY	\$2.84	24.6%	\$63.26	\$435.95	89.0%	\$714.18	\$801.09	\$73.08	\$810.82	\$71.78
Lifetime Brands, Inc.	LCUT	\$9.45	68.7%	\$196.15	\$495.32	52.3%	\$708.57	\$704.54	\$49.84	\$747.13	\$0.00
Newell Brands Inc.	NWL	\$15.34	54.1%	\$6,490.09	\$12,963.80	57.1%	\$17,716.40	\$8,630.90	\$918.20	\$8,348.25	\$1,012.34
tison AG	TIS	\$0.05	32.9%	\$0.39	\$0.00	92.7%	\$69.34	\$455.68	-\$6.13	\$0.00	\$0.00
The Procter & Gamble Company	PG	\$104.05	99.9%	\$260,289.37	\$288,201.53	38.2%	\$123,687.00	\$66,912.00	\$17,626.00	\$68,599.45	\$17,704.36
Spectrum Brands Holdings, Inc.	SPB	\$54.78	59.1%	\$2,694.97	\$7,526.62	77.1%	\$7,551.50	\$3,100.90	\$481.70	\$3,754.24	\$562.01
Tupperware Brands Corporation	TUP	\$25.58	52.4%	\$1,244.90	\$2,025.49	136.0%	\$1,308.80	\$2,069.70	\$368.20	\$1,978.95	\$368.89

Notes: LTM (latest twelve months); Enterprise Value (market capitalization less total cash and short-term investments plus short-term borrowings and total long-term debt);

EBITDA (earnings before interest, taxes, depreciation and amortization)

Source: Capital IQ

The material contained in this publication is meant to provide general information regarding valuation topics. This publication does not constitute investment advice with respect to the securities of any company discussed herein, is not intended to provide information upon which to base an investment decision, and should not be construed as such. Professional advice should be obtained before taking any action based on the information contained herein.

Publicly available information utilized in this publication has been obtained from sources deemed to be reliable. Houlihan does not guarantee the accuracy or completeness of the information provided within this publication. The material presented reflects information known to the authors at the time this publication was written and this information is subject to change.

Select Consumer Products Public Company Industry Data As of March 31, 2019

(USD in millions, except per share data)

Company Name	Ticker	Market Data					LTM Operating Data			Forward Estimates	
		Price at 03/31/19	% of 52 Week High	Equity Value	Enterprise Value	Debt / Total Capital	Total Assets	LTM Revenue	LTM EBITDA	CY 2019 Revenue Estimate	CY 2019 EBITDA Estimate
Leisure Products											
Brunswick Corporation	BC	\$50.33	72.1%	\$4,380.64	\$5,557.94	43.6%	\$4,285.70	\$5,159.20	\$642.40	\$5,470.01	\$773.72
Hasbro, Inc.	HAS	\$85.02	77.6%	\$10,699.13	\$11,684.53	49.3%	\$5,262.99	\$4,579.65	\$759.32	\$4,906.74	\$932.29
Marine Products Corporation	MPX	\$13.47	54.3%	\$460.61	\$462.23	0.0%	\$100.88	\$298.62	\$37.21	\$298.55	\$36.48
Mattel, Inc.	MAT	\$13.00	72.3%	\$4,490.15	\$6,575.69	81.0%	\$5,243.47	\$4,510.85	\$135.08	\$4,471.12	\$382.70
Polaris Industries Inc.	PII	\$84.43	64.3%	\$5,152.89	\$7,833.37	69.4%	\$4,124.92	\$6,165.97	\$701.55	\$6,781.61	\$799.95
Personal Products											
Avon Products, Inc.	AVP	\$2.94	86.2%	\$1,300.73	\$2,728.91	134.0%	\$3,010.00	\$5,571.30	\$497.80	\$5,152.92	\$346.02
Revlon, Inc.	REV	\$19.38	65.4%	\$1,024.58	\$4,062.56	152.1%	\$3,016.80	\$2,564.50	\$89.40	\$2,527.90	\$261.00
The Estée Lauder Companies Inc.	EL	\$165.55	99.9%	\$59,790.45	\$62,533.81	43.9%	\$12,676.00	\$14,194.00	\$2,957.00	\$15,037.10	\$3,246.07
Medifast, Inc.	MED	\$127.55	48.9%	\$1,514.07	\$1,605.58	0.0%	\$169.43	\$501.00	\$73.50	\$703.73	\$108.85
Nu Skin Enterprises, Inc.	NUS	\$47.86	54.0%	\$2,649.58	\$2,793.69	35.5%	\$1,694.45	\$2,679.01	\$401.75	\$2,768.64	\$430.39
Inter Parfums, Inc.	IPAR	\$75.87	93.7%	\$2,385.53	\$2,259.99	7.3%	\$799.17	\$675.57	\$105.76	\$720.27	\$119.00
Prestige Consumer Healthcare Inc.	PBH	\$29.91	71.6%	\$1,549.29	\$3,272.11	59.9%	\$3,668.08	\$990.72	\$336.09	\$960.65	\$331.78
USANA Health Sciences, Inc.	USNA	\$83.87	60.8%	\$1,956.22	\$1,643.14	0.0%	\$554.46	\$1,189.25	\$204.54	\$1,235.75	\$209.30

Notes: LTM (latest twelve months); Enterprise Value (market capitalization less total cash and short-term investments plus short-term borrowings and total long-term debt);

EBITDA (earnings before interest, taxes, depreciation and amortization)

Source: Capital IQ

Select Consumer Products Public Company Valuation Metrics As of March 31, 2019

(USD in millions, except per share data)

Company Name	Ticker	LTM Operating Statistics						Trading Multiples			
		Return On Assets	Return On Equity	Return On Capital	Revenue Growth	EBITDA Growth	EBITDA Margin	TEV/ LTM Revenue	TEV/ CY 2019 Revenue	TEV/ LTM EBITDA	TEV/ CY 2019 EBITDA
Consumer Durables											
Ethan Allen Interiors Inc.	ETH	5.5%	9.1%	7.7%	2.2%	-6.0%	8.7%	0.6x	0.6x	7.4x	6.7x
La-Z-Boy Incorporated	LZB	8.5%	16.1%	12.8%	8.6%	4.7%	9.6%	0.9x	0.8x	9.1x	8.6x
Leggett & Platt, Incorporated	LEG	8.1%	26.1%	11.8%	8.3%	2.4%	13.4%	1.5x	1.3x	11.5x	8.6x
Mohawk Industries, Inc.	MHK	5.9%	11.9%	7.2%	5.2%	-8.2%	17.1%	1.3x	1.2x	7.4x	7.7x
Tempur Sealy International, Inc.	TPX	5.8%	69.5%	8.4%	0.1%	-12.6%	12.5%	1.8x	1.7x	14.7x	10.8x
Whirlpool Corporation	WHR	4.1%	-3.8%	8.1%	-1.0%	-6.7%	9.1%	0.7x	0.7x	7.5x	7.2x
	Mean	6.3%	21.5%	9.3%	3.9%	-4.4%	11.7%	1.1x	1.1x	9.6x	8.3x
	Median	5.9%	14.0%	8.2%	3.7%	-6.4%	11.0%	1.1x	1.0x	8.3x	8.1x
Household Products											
Church & Dwight Co., Inc.	CHD	8.2%	24.3%	10.8%	9.8%	4.0%	22.5%	4.8x	4.6x	21.4x	20.1x
Colgate-Palmolive Company	CL	18.9%	1162.7%	35.1%	0.6%	-2.6%	27.5%	4.2x	4.2x	15.4x	15.6x
Energizer Holdings, Inc.	ENR	6.7%	199.6%	16.5%	1.5%	3.5%	20.5%	2.3x	1.5x	11.1x	6.8x
Kimberly-Clark Corporation	KMB	13.3%	345.7%	24.9%	0.8%	-3.7%	20.9%	2.7x	2.7x	12.9x	12.2x
Libbey Inc.	LBY	2.5%	-13.6%	4.0%	2.0%	-1.3%	9.1%	0.5x	0.5x	6.0x	6.1x
Lifetime Brands, Inc.	LCUT	3.0%	-0.7%	3.7%	21.6%	46.6%	7.1%	0.7x	0.7x	9.9x	N/A
Newell Brands Inc.	NWL	1.4%	-69.8%	1.9%	-9.6%	3.6%	10.6%	1.5x	1.6x	14.1x	12.8x
ticon AG	TIS	-7.0%	-92.4%	-25.0%	1.7%	N/A	-1.3%	0.0x	N/A	0.0x	N/A
The Procter & Gamble Company	PG	7.4%	19.9%	10.3%	1.8%	1.5%	26.3%	4.3x	4.2x	16.4x	16.3x
Spectrum Brands Holdings, Inc.	SPB	2.6%	11.7%	3.2%	-6.8%	-13.6%	15.5%	2.4x	2.0x	15.6x	13.4x
Tupperware Brands Corporation	TUP	14.6%	N/A	31.0%	-8.2%	-9.7%	17.8%	1.0x	1.0x	5.5x	5.5x
	Mean	6.5%	158.7%	10.6%	1.4%	2.8%	16.1%	2.2x	2.3x	11.7x	12.1x
	Median	6.7%	15.8%	10.3%	1.5%	0.1%	17.8%	2.3x	1.8x	12.9x	12.8x

Notes: LTM (latest twelve months); NTM (next twelve months); EBITDA (earnings before interest, taxes, depreciation and amortization); TEV (total enterprise value)

Source: Capital IQ

Select Consumer Products Public Company Valuation Metrics As of March 31, 2019

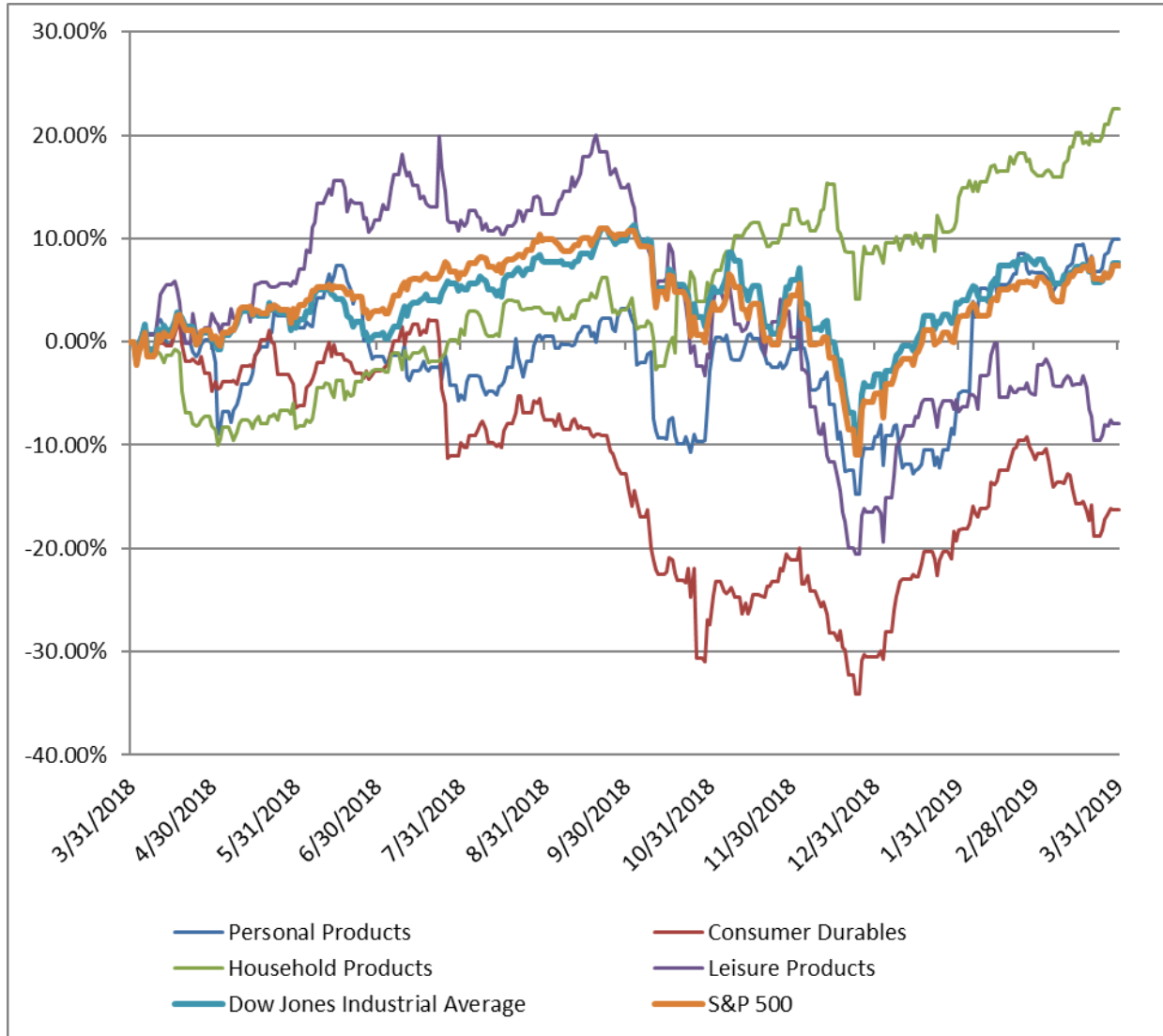
(USD in millions, except per share data)

Company Name	Ticker	LTM Operating Statistics						Trading Multiples			
		Return On Assets	Return On Equity	Return On Capital	Revenue Growth	EBITDA Growth	EBITDA Margin	TEV/ LTM Revenue	TEV/ CY 2019 Revenue	TEV/ LTM EBITDA	TEV/ CY 2019 EBITDA
Leisure Products											
Brunswick Corporation	BC	8.1%	17.2%	13.0%	6.7%	6.4%	12.5%	1.1x	1.0x	8.7x	7.2x
Hasbro, Inc.	HAS	7.0%	12.3%	10.4%	-12.1%	-24.1%	16.6%	2.6x	2.4x	15.4x	12.5x
Marine Products Corporation	MPX	22.5%	39.3%	30.5%	11.7%	18.9%	12.5%	1.5x	1.5x	12.4x	12.7x
Mattel, Inc.	MAT	-1.5%	-55.1%	-2.2%	-7.6%	151.9%	3.0%	1.5x	1.5x	48.7x	17.2x
Polaris Industries Inc.	PII	8.5%	37.3%	13.1%	12.0%	10.6%	11.4%	1.3x	1.2x	11.2x	9.8x
	Mean	8.9%	10.2%	13.0%	2.1%	32.7%	11.2%	1.6x	1.5x	19.3x	11.9x
	Median	8.1%	17.2%	13.0%	6.7%	10.6%	12.5%	1.5x	1.5x	12.4x	12.5x
Personal Products											
Avon Products, Inc.	AVP	7.9%	N/A	18.6%	-2.5%	19.4%	8.9%	0.5x	0.5x	5.5x	7.9x
Revlon, Inc.	REV	-0.4%	N/A	-0.6%	-4.8%	-53.5%	3.5%	1.6x	1.6x	45.4x	15.6x
The Estée Lauder Companies Inc.	EL	11.9%	36.8%	18.7%	11.2%	9.1%	20.8%	4.4x	4.2x	21.1x	19.3x
Medifast, Inc.	MED	27.4%	51.3%	39.7%	66.1%	67.6%	14.7%	3.2x	2.3x	21.8x	14.7x
Nu Skin Enterprises, Inc.	NUS	12.1%	16.4%	17.3%	17.5%	16.1%	15.0%	1.0x	1.0x	7.0x	6.5x
Inter Parfums, Inc.	IPAR	7.5%	12.1%	9.4%	14.3%	16.8%	15.7%	3.3x	3.1x	21.4x	19.0x
Prestige Consumer Healthcare Inc.	PBH	5.0%	5.2%	6.0%	-3.4%	-2.7%	33.9%	3.3x	3.4x	9.7x	9.9x
USANA Health Sciences, Inc.	USNA	21.9%	33.5%	31.1%	13.6%	35.1%	17.2%	1.4x	1.3x	8.0x	7.9x
	Mean	11.7%	25.9%	17.5%	14.0%	13.5%	16.2%	2.3x	2.2x	17.5x	12.6x
	Median	9.9%	24.9%	17.9%	12.4%	16.5%	15.3%	2.4x	1.9x	15.4x	12.3x

Notes: LTM (latest twelve months); NTM (next twelve months); EBITDA (earnings before interest, taxes, depreciation and amortization); TEV (total enterprise value)

Source: Capital IQ

Consumer Products Public Company LTM Equity Performance As of March 31, 2019



Note: The indices are derived from the equity performance of the previously listed companies. Source: Capital IQ

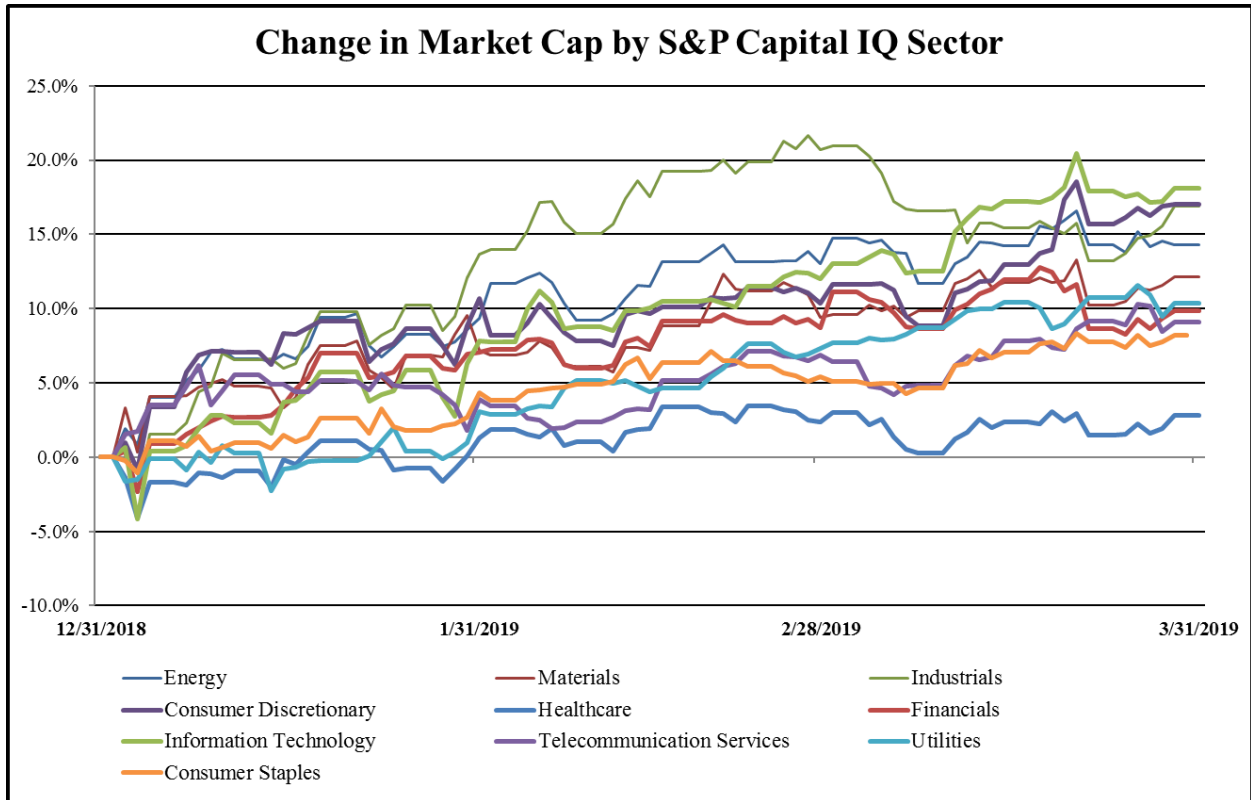
Recent M&A Activity in the Consumer Products Industry March 31, 2018 to March 31, 2019

(USD in millions)

Close Date	Target	Acquirer	Target Company Primary Industry	Implied Enterprise Value
12/21/2018	Pure Fishing, Inc.	Sycamore Partners	Leisure Products	\$1,300.00
12/21/2018	Jostens, Inc.	Platinum Equity, LLC	Apparel, Accessories and Luxury	\$1,300.00
4/12/2018	Ring Inc.	Amazon.com, Inc.	Consumer Electronics	\$992.78
9/20/2018	Belkin International, Inc.	FIT Hon Teng Limited	Consumer Electronics	\$850.00
7/2/2018	Boat Holdings, LLC	Polaris Sales Inc.	Leisure Products	\$825.00
10/2/2018	AV Homes, Inc.	Taylor Morrison Home Corporation	Homebuilding	\$781.53
6/12/2018	Saban Brands Voyagers And SCG Characters And SCG	Hasbro, Inc.	Leisure Products	\$522.00
8/28/2018	Thom Browne, Inc.	Ermenegildo Zegna Holditalia S.p.A.	Apparel, Accessories and Luxury	\$500.00
10/22/2018	Perry Ellis International, Inc.	N/A	Apparel, Accessories and Luxury	\$486.23
6/4/2018	Columbia River and All Assets of Sunlight Supply, IP	Hawthorne Hydroponics LLC	Household Appliances	\$470.00
6/29/2018	Rawlings Sporting Goods Company, Inc.	Seidler Equity Partners; Major League Baseball	Leisure Products	\$395.00
10/18/2018	Vionic Group, LLC	Caleres, Inc.	Footwear	\$360.00
4/30/2018	Nautica brand business of V.F. Corporation	Authentic Brands Group LLC	Apparel, Accessories and Luxury	\$289.10
10/30/2018	Brahmin Leather Works, Inc.	Markel Ventures, Inc.	Apparel, Accessories and Luxury	\$213.26
10/1/2018	MVMT Watches Inc.	Movado Group, Inc.	Apparel, Accessories and Luxury	\$200.00
11/13/2018	Westport Homes, Inc.	D.R. Horton, Inc.	Homebuilding	\$190.00
2/13/2019	Aquion, Inc.	Pentair plc	Household Appliances	\$160.00
12/31/2018	Circle Towers	N/A	Homebuilding	\$160.00
6/1/2018	Altra Footwear Brand and Certain Assets in Europe of Icon	V.F. Corporation	Footwear	\$131.56
3/15/2019	North American operations of Springs Global Participações	Keeco, LLC	Home Furnishings	\$126.00
9/4/2018	Ravin Crossbows, LLC	Velocity Outdoor, Inc.	Leisure Products	\$123.00
2/12/2019	Enviro Water Solutions, Inc.	Pentair plc	Household Appliances	\$120.00
1/16/2019	Tangible Play, Inc.	Think & Learn Pvt Ltd	Consumer Electronics	\$120.00
3/11/2019	Altia Systems, Inc.	GN Audio A/S	Consumer Electronics	\$113.00
7/3/2018	Fabric Development, Inc. and Textile Products, Inc.	Kordsa, Incorporated	Textiles	\$100.00
1/23/2019	Five Manufactured Home Communities Located in Indiana	N/A	Homebuilding	\$89.70
5/2/2018	CID Resources, Inc.	Superior Group of Companies, Inc.	Apparel, Accessories and Luxury	\$88.18
4/2/2018	GUND, Inc.	Spin Master Corp.	Leisure Products	\$76.03
4/4/2018	Oboz Footwear, LLC	Kathmandu Holdings Limited	Footwear	\$75.00
2/1/2019	Ringers Gloves, Inc.	Ansell Limited	Apparel, Accessories and Luxury	\$70.00
10/31/2018	Atlanta Decorative Arts Center	International Market Centers, Inc.	Home Furnishings	\$67.50
1/25/2019	CMT Developers LLC	Alpha Investment Inc.	Homebuilding	\$60.50
12/11/2018	Terramor Homes, Inc.	D.R. Horton, Inc.	Homebuilding	\$60.00
12/11/2018	Dunhill Homes/Nathan Carlisle Homes	TRI Pointe Group, Inc.	Homebuilding	\$60.00
12/4/2018	Classic Builders, Inc.	D.R. Horton, Inc.	Homebuilding	\$60.00
12/18/2018	Pure Health Solutions, Inc.	Quench USA, Inc.	Household Appliances	\$57.60
1/3/2019	Halo2Cloud, LLC	ZAGG Inc	Consumer Electronics	\$43.23
11/6/2018	TP Apparel LLC/TP Apparel Europe Ltd	Redbubble Limited	Apparel, Accessories and Luxury	\$41.00
8/8/2018	Commercial and Central Vacuum Cleaner Businesses in	Bissell, Inc.; NuEra Air Solutions, Inc.	Household Appliances	\$37.00
8/6/2018	Ashford Riverview and Ashford Palmetto Square	RADCO Development LLC	Homebuilding	\$30.00
11/30/2018	The Business and Certain Assets of The Furniture	Lippert Components Manufacturing, Inc.	Leisure Products	\$28.00
8/6/2018	Jay Gems Inc.	Renaissance Jewelry New York, Inc.	Apparel, Accessories and Luxury	\$25.62
2/2/2019	Arden Companies, Inc.	Central Garden & Pet Company	Textiles	\$24.36
11/20/2018	Thomasville and Broyhill Business Units of Heritage Home	Authentic Brands Group LLC; SB360 Capital	Home Furnishings	\$22.00
3/14/2019	OurPet's Company	Hyper-Pet LLC	Housewares and Specialties	\$21.10
6/22/2018	Sam Tucker, LLC	Culp, Inc.	Textiles	\$21.03
12/17/2018	All Operating Assets of Maiweave LLC	Intertape Polymer Group Inc.	Textiles	\$21.00
2/12/2019	Halston Brand, Halston Heritage, Roy Frowick and Other Assets of House of Halston, LLC	Xcel Brands, Inc.	Apparel, Accessories and Luxury Goods	\$15.40
5/3/2018	VIEVU LLC	Axon Enterprise, Inc.	Consumer Electronics	\$12.94
12/17/2018	Tepui Outdoors, Inc.	Thule Group AB (publ)	Leisure Products	\$9.50
4/3/2018	Avon Engineered Fabrications, Inc.	Performance Inflatables Co., LLC	Textiles	\$9.25
4/12/2018	Substantially All of the Assets of Estes-Cox Corporation	Estes Industries, LLC	Leisure Products	\$6.00
10/30/2018	Cloud B, Inc.	Edison Nation, Inc.	Leisure Products	\$4.06
4/30/2018	All Assets of Petzila, Inc.	SigmaTron International, Inc.	Consumer Electronics	\$3.50
3/8/2019	All of the Assets of HaloSource, Inc./HaloSource Water	Strix Group Plc	Household Appliances	\$1.30
10/1/2018	Substantially All Assets of Playhut, Inc.	Basic Fun, Inc.	Leisure Products	\$1.15
1/10/2019	Hospitality Business & Assets of Red The Uniform Tailor	Unisync Corp.	Apparel, Accessories and Luxury	\$0.70
2/19/2019	Red Wire Group, LLC	12 Retch Corporation	Apparel, Accessories and Luxury	\$0.45

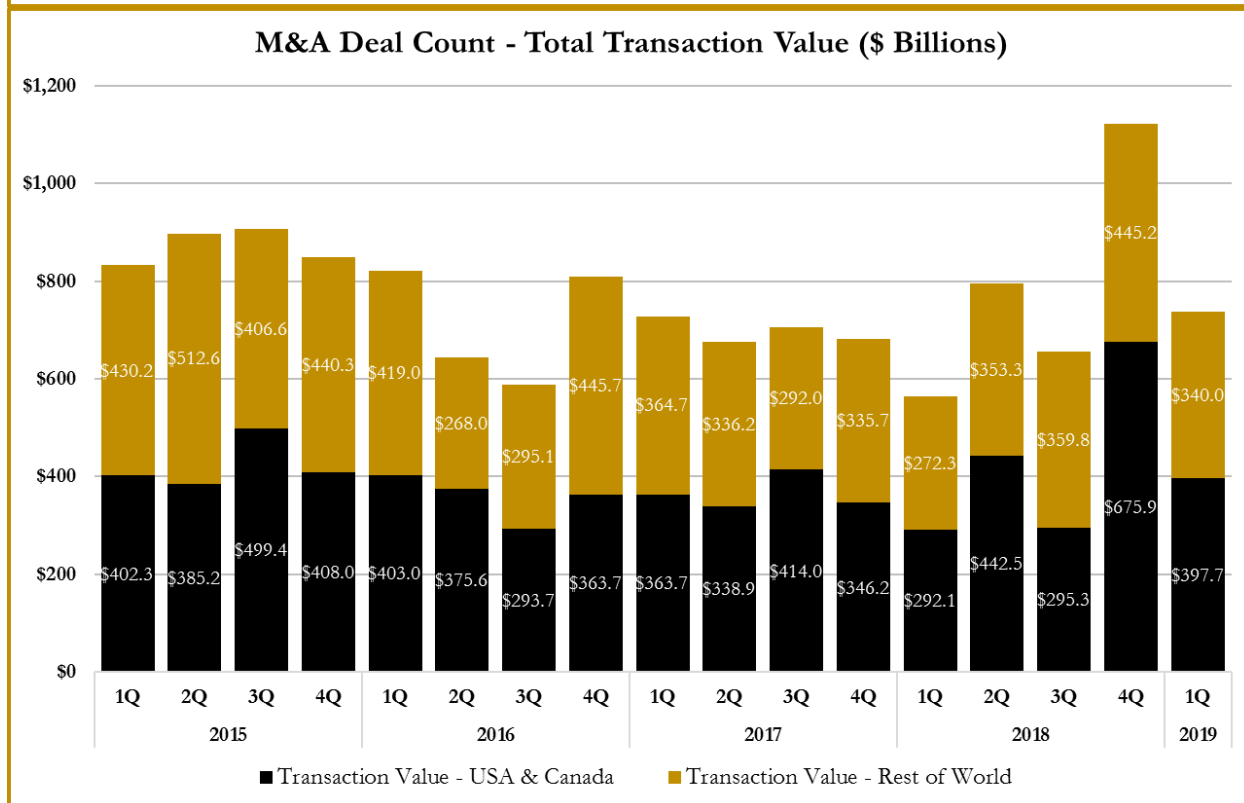
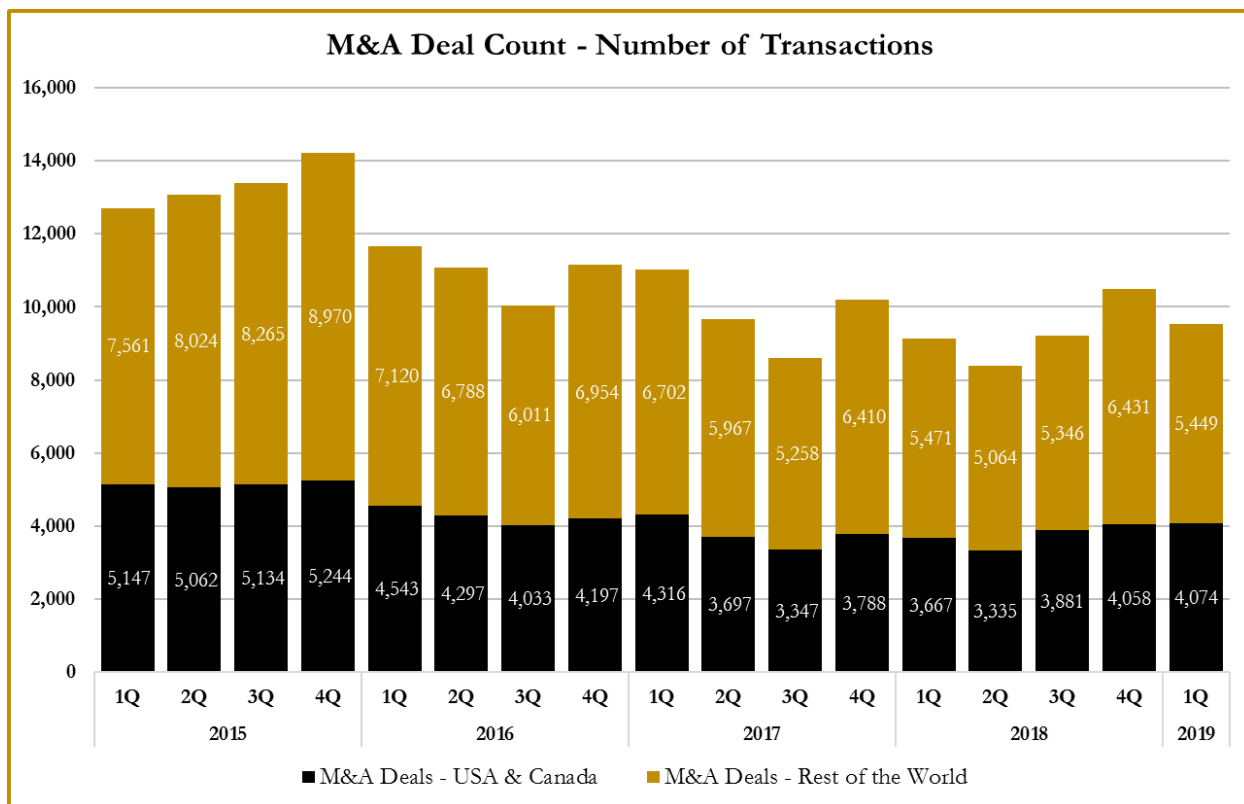
Source: Capital IQ

S&P Capital IQ - Sector Last 3 Month Equity Performance
As of March 31, 2019

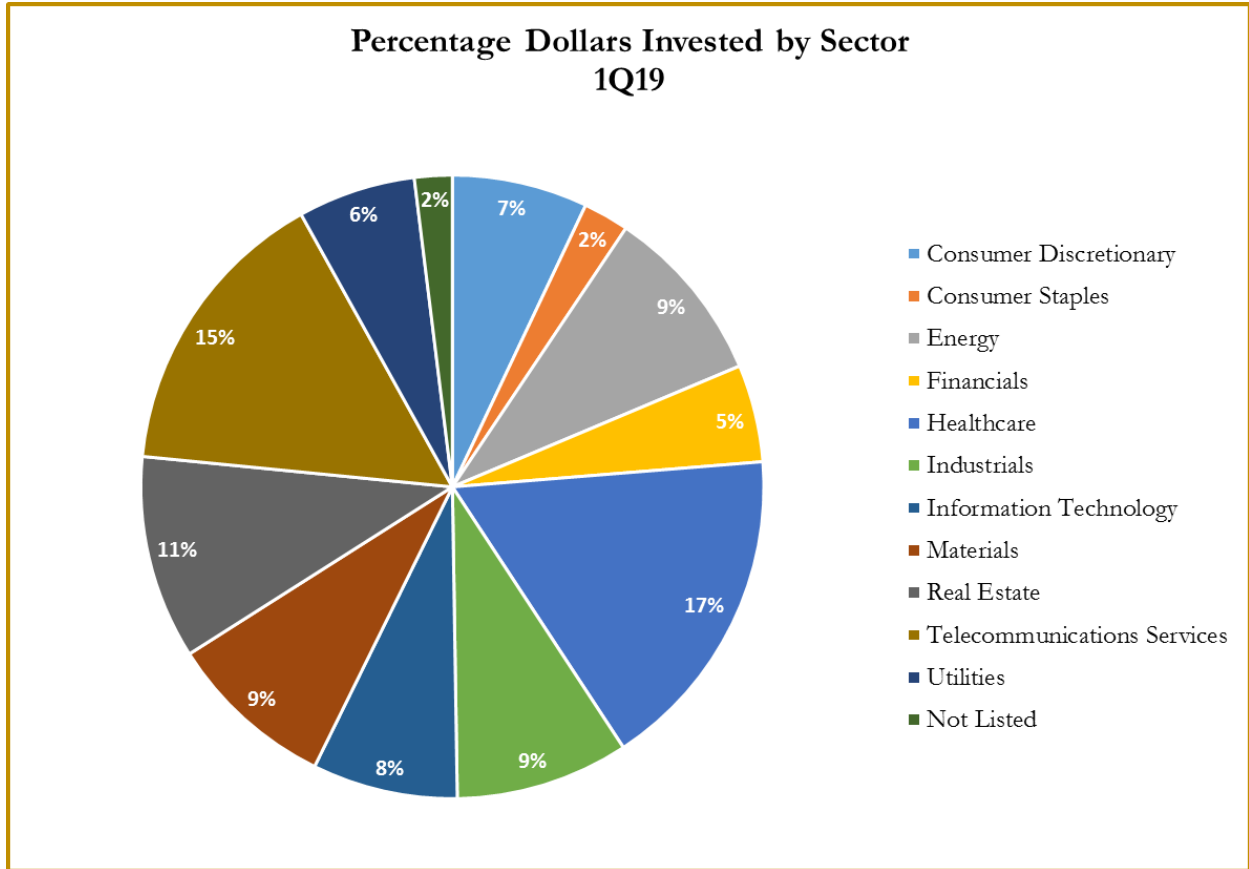


Note: The indices are derived from the equity performance of the S&P Capital IQ Sectors. Source: Capital IQ

M&A Deal Flow Statistics by S&P Capital IQ Sector As of March 31, 2019



M&A Deal Flow Statistics by S&P Capital IQ Sector
As of March 31, 2019





About Us

Houlihan Capital is a leading, solutions-driven valuation, financial advisory and boutique investment banking firm. We pride ourselves on being thought leaders in an ever-changing landscape.

Houlihan Capital is SOC-compliant, a FINRA and SIPC member and committed to the highest levels of professional ethics and standards.

Valuation & Financial Advisory

We provide an array of services that include enterprise valuations, portfolio valuation, valuation of carried interest, transaction opinions, tax and financial reporting compliance, purchase price allocations, and a wide variety of consulting services through our Financial Advisory Group.

Investment Banking

Through our Investment Banking Group, we offer sell side/buy side advisory and capital raises. Through our Special Situations desk, we provide services that fit outside the archetypal verticals, including liquidity solutions, transactional advisory, and secondary market advisory and trading.

Litigation Support

Our team provides support for a wide variety of situations including commercial and shareholder disputes, derivatives and structured finance litigation, and fraudulent conveyance.

For additional information about our industry expertise and services, visit:

www.houlihancapital.com

Andrew Smith

asmith@houlihancapital.com
312.450.8610

Paul Clark

pclark@houlihancapital.com
312.450.8656

Michael Norton

mnorton@houlihancapital.com
312.450.8628

Monica Blocker

mblocker@houlihancapital.com
312.450.8699
