



Industry Update
Healthcare
Q1 2021

1

Financial Performance

Size Profile, LTM Financials, Forward Estimates

(USD in millions, except per share data)

Company Name	Ticker	Size Profile			LTM Operating Data		Forward Estimates		
		Price at 03/31/21	% of 52 Week High	TEV	Total Assets	LTM Revenue	LTM EBITDA	2021 Est. Revenue	2021 Est. EBITDA
Healthcare Equipment and Supplies									
Medtronic plc	MDT	\$118.13	98.0%	\$185,479	\$97,270	\$27,926	\$6,312	\$32,335	\$10,012
Stryker Corporation	SYK	\$243.58	97.4%	\$108,060	\$34,330	\$14,351	\$3,755	\$17,088	\$4,777
Boston Scientific Corporation	BSX	\$38.65	91.2%	\$65,922	\$30,777	\$9,913	\$2,252	\$11,433	\$3,307
Align Technology, Inc.	ALGN	\$541.53	85.4%	\$47,100	\$4,830	\$2,472	\$481	\$3,473	\$1,013
ResMed Inc.	RMD	\$194.02	86.5%	\$30,423	\$4,573	\$3,092	\$1,014	\$3,307	\$1,124
Teleflex Incorporated	TFX	\$415.46	95.5%	\$22,385	\$7,153	\$2,537	\$657	\$2,816	\$833
The Cooper Companies, Inc.	COO	\$384.09	95.6%	\$21,648	\$8,922	\$2,465	\$712	\$2,868	\$979
Integra LifeSciences Holdings Corporation	IART	\$69.09	96.8%	\$7,275	\$3,615	\$1,372	\$336	\$1,528	\$388
Haemonetics Corporation	HAE	\$111.01	78.1%	\$6,158	\$1,318	\$884	\$220	\$978	\$296
ICU Medical, Inc.	ICUI	\$205.44	86.9%	\$4,054	\$1,764	\$1,271	\$220	\$1,246	\$256
NuVasive, Inc.	NUVA	\$65.56	94.6%	\$4,047	\$2,693	\$1,051	\$181	\$1,196	\$294
Healthcare Providers and Services									
Cigna Corporation	CI	\$241.74	97.1%	\$111,805	\$155,451	\$160,550	\$10,702	\$165,802	\$11,101
HCA Healthcare, Inc.	HCA	\$188.34	97.1%	\$98,707	\$47,490	\$51,533	\$9,923	\$54,653	\$10,640
Humana Inc.	HUM	\$419.25	88.3%	\$58,775	\$34,969	\$77,155	\$5,251	\$81,856	\$4,247
Centene Corporation	CNC	\$63.91	85.6%	\$45,068	\$68,719	\$104,176	\$5,369	\$117,815	\$5,220
DaVita Inc.	DVA	\$107.77	86.0%	\$24,380	\$16,989	\$11,551	\$2,349	\$11,563	\$2,416
Tenet Healthcare Corporation	THC	\$52.00	89.8%	\$22,981	\$27,106	\$17,640	\$2,427	\$19,424	\$3,011
Community Health Systems, Inc.	CYH	\$13.52	96.0%	\$13,055	\$16,006	\$11,789	\$1,011	\$12,046	\$1,663
Select Medical Holdings Corporation	SEM	\$34.10	91.1%	\$9,263	\$7,655	\$5,532	\$683	\$5,753	\$850

Financial Performance (cont.)

Size Profile, LTM Financials, Forward Estimates

(USD in millions, except per share data)

Company Name	Ticker	Size Profile			LTM Operating Data		Forward Estimates		
		Price at 03/31/21	% of 52 Week High	TEV	Total Assets	LTM Revenue	LTM EBITDA	2021 Est. Revenue	2021 Est. EBITDA
Pharmaceuticals									
AbbVie Inc.	ABBV	\$108.22	95.4%	\$267,274	\$150,565	\$45,804	\$22,170	\$55,464	\$29,899
Pfizer Inc.	PFE	\$36.23	84.1%	\$239,006	\$154,229	\$41,908	\$14,887	\$60,554	\$23,798
Merck & Co., Inc.	MRK	\$77.09	87.8%	\$219,526	\$91,588	\$47,994	\$19,070	\$52,236	\$22,024
Eli Lilly and Company	LLY	\$186.82	85.7%	\$183,052	\$46,633	\$24,540	\$8,875	\$27,864	\$10,435
Bristol-Myers Squibb Company	BMY	\$63.13	94.0%	\$178,814	\$118,481	\$42,518	\$18,184	\$46,212	\$24,632
Perrigo Company plc	PRGO	\$40.47	68.8%	\$8,614	\$11,488	\$5,063	\$861	\$4,201	\$682
Amneal Pharmaceuticals, Inc.	AMRX	\$6.73	90.4%	\$3,583	\$4,006	\$1,993	\$381	\$2,138	\$517

2

Valuation Metrics

Return Profile, Trading Multiples

Company Name	Ticker	Return Profile					Trading Multiples		
		Return on Assets	Return on Equity	Revenue Growth	EBITDA Margin	EBITDA Growth	5-yr Beta	TEV / LTM Revenue	TEV / LTM EBITDA
Healthcare Equipment and Supplies									
Medtronic plc	MDT	2.5%	6.0%	-10.1%	22.6%	-34.9%	0.8x	6.6x	29.4x
Stryker Corporation	SYK	5.7%	12.4%	-3.6%	26.2%	-9.9%	1.0x	7.5x	28.8x
Boston Scientific Corporation	BSX	2.3%	-0.6%	-7.7%	22.7%	-20.1%	0.8x	6.7x	29.3x
Align Technology, Inc.	ALGN	6.6%	77.5%	2.7%	19.4%	-19.0%	1.7x	19.1x	98.0x
ResMed Inc.	RMD	12.5%	27.3%	11.0%	32.8%	26.2%	0.3x	9.8x	30.0x
Teleflex Incorporated	TFX	4.0%	10.6%	-2.2%	25.9%	-7.6%	1.2x	8.8x	34.1x
The Cooper Companies, Inc.	COO	3.4%	46.3%	-7.7%	28.9%	-17.3%	0.8x	8.8x	30.4x
Integra LifeSciences Holdings Corporation	IART	4.0%	9.1%	-9.6%	24.5%	-9.3%	1.2x	5.3x	21.7x
Haemonetics Corporation	HAE	6.4%	16.7%	-11.5%	24.9%	-11.8%	0.5x	7.0x	28.0x
ICU Medical, Inc.	ICUI	4.9%	6.0%	0.4%	17.3%	-8.0%	0.6x	3.2x	18.4x
NuVasive, Inc.	NUVA	1.4%	-4.1%	-10.1%	17.2%	-26.6%	1.3x	3.9x	22.4x
	Mean	4.9%	18.8%	-4.4%	23.9%	-12.6%	0.9x	7.9x	33.7x
	Median	4.0%	10.6%	-7.7%	24.5%	-11.8%	0.8x	7.0x	29.3x
Healthcare Providers and Services									
Cigna Corporation	CI	3.6%	17.7%	4.4%	6.7%	-9.4%	0.9x	0.7x	10.4x
HCA Healthcare, Inc.	HCA	9.7%	377.1%	0.4%	19.3%	1.1%	1.7x	1.9x	9.9x
Humana Inc.	HUM	9.7%	26.1%	18.9%	6.8%	51.3%	0.9x	0.8x	11.2x
Centene Corporation	CNC	4.7%	9.3%	47.1%	5.2%	66.6%	0.5x	0.4x	8.4x
DaVita Inc.	DVA	6.3%	31.4%	1.4%	20.3%	-0.9%	1.3x	2.1x	10.4x
Tenet Healthcare Corporation	THC	3.9%	31.8%	-4.5%	13.8%	-15.9%	2.6x	1.3x	9.5x
Community Health Systems, Inc.	CYH	2.3%	N/A	-10.8%	8.6%	-27.3%	2.0x	1.1x	12.9x
Select Medical Holdings Corporation	SEM	4.0%	19.4%	1.4%	12.4%	-0.2%	1.4x	1.7x	13.6x
	Mean	5.5%	73.3%	7.3%	11.6%	8.2%	1.4x	1.3x	10.8x
	Median	4.3%	26.1%	1.4%	10.5%	-0.5%	1.3x	1.2x	10.4x

Source: Capital IQ

Valuation Metrics (cont.)

Return Profile, Trading Metrics

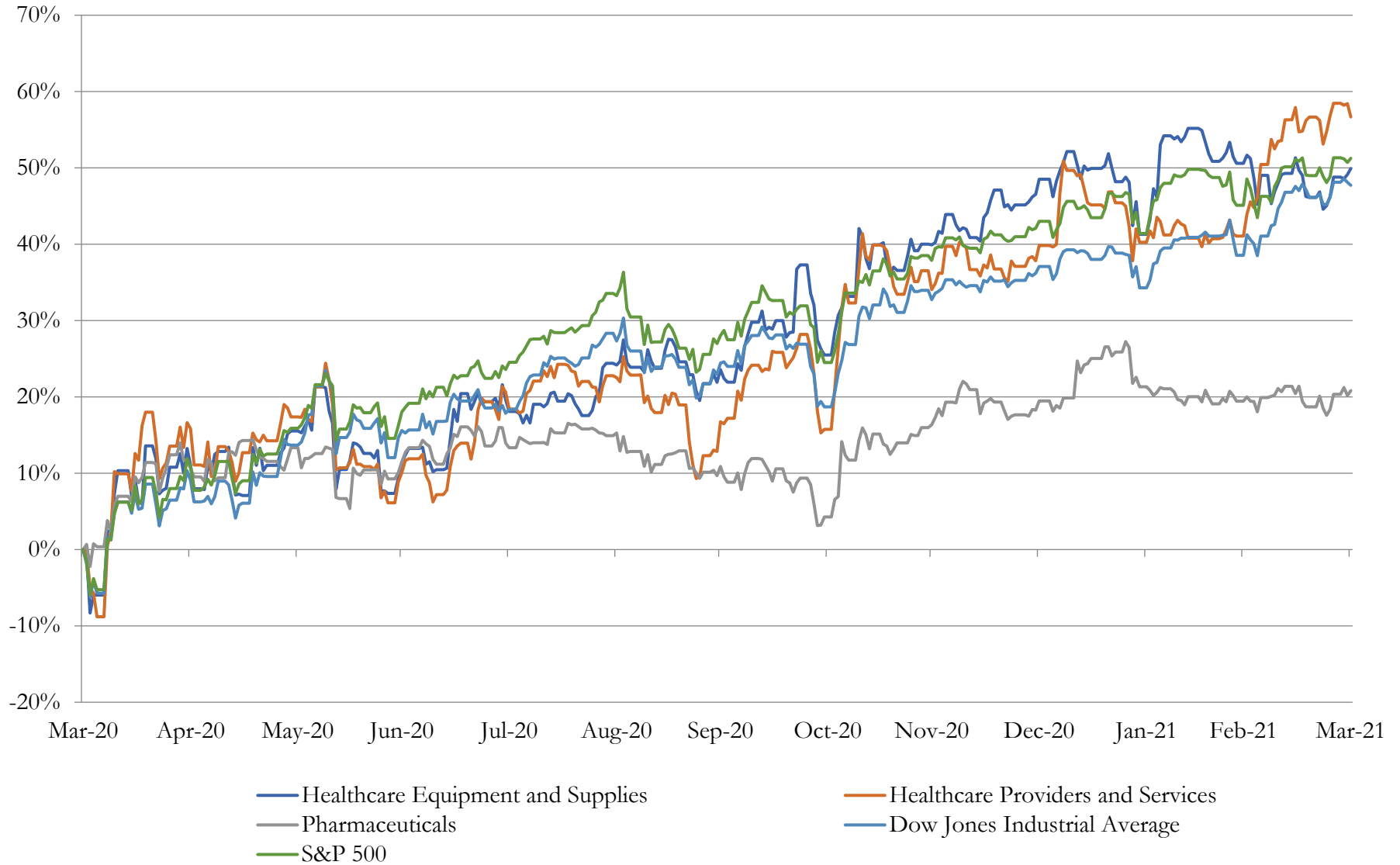
Company Name	Ticker	Return Profile					Trading Multiples		
		Return on Assets	Return on Equity	Revenue Growth	EBITDA Margin	EBITDA Growth	5-yr Beta	TEV / LTM Revenue	TEV / LTM EBITDA
Pharmaceuticals									
AbbVie Inc.	ABBV	8.2%	187.7%	37.7%	48.4%	41.1%	0.8x	5.8x	12.1x
Pfizer Inc.	PFE	3.9%	11.1%	1.8%	35.5%	5.3%	0.7x	5.7x	16.1x
Merck & Co., Inc.	MRK	11.2%	27.6%	2.5%	39.7%	3.8%	0.4x	4.6x	11.5x
Eli Lilly and Company	LLY	11.0%	145.3%	9.9%	36.2%	22.7%	0.3x	7.5x	20.6x
Bristol-Myers Squibb Company	BMJ	3.9%	-20.1%	62.6%	42.8%	106.1%	0.6x	4.2x	9.8x
Perrigo Company plc	PRGO	2.6%	-2.8%	4.7%	17.0%	5.9%	1.2x	1.7x	10.0x
Amneal Pharmaceuticals, Inc.	AMRX	2.4%	19.5%	22.5%	19.1%	65.0%	1.4x	1.8x	9.4x
	Mean	6.2%	52.6%	20.2%	34.1%	35.7%	0.8x	4.5x	12.8x
	Median	3.9%	19.5%	9.9%	36.2%	22.7%	0.7x	4.6x	11.5x

Source: Capital IQ

3

LTM Equity Performance

Major Indexes



4

Recent M&A Activity

Last Twelve (12) Months as of March 31, 2021

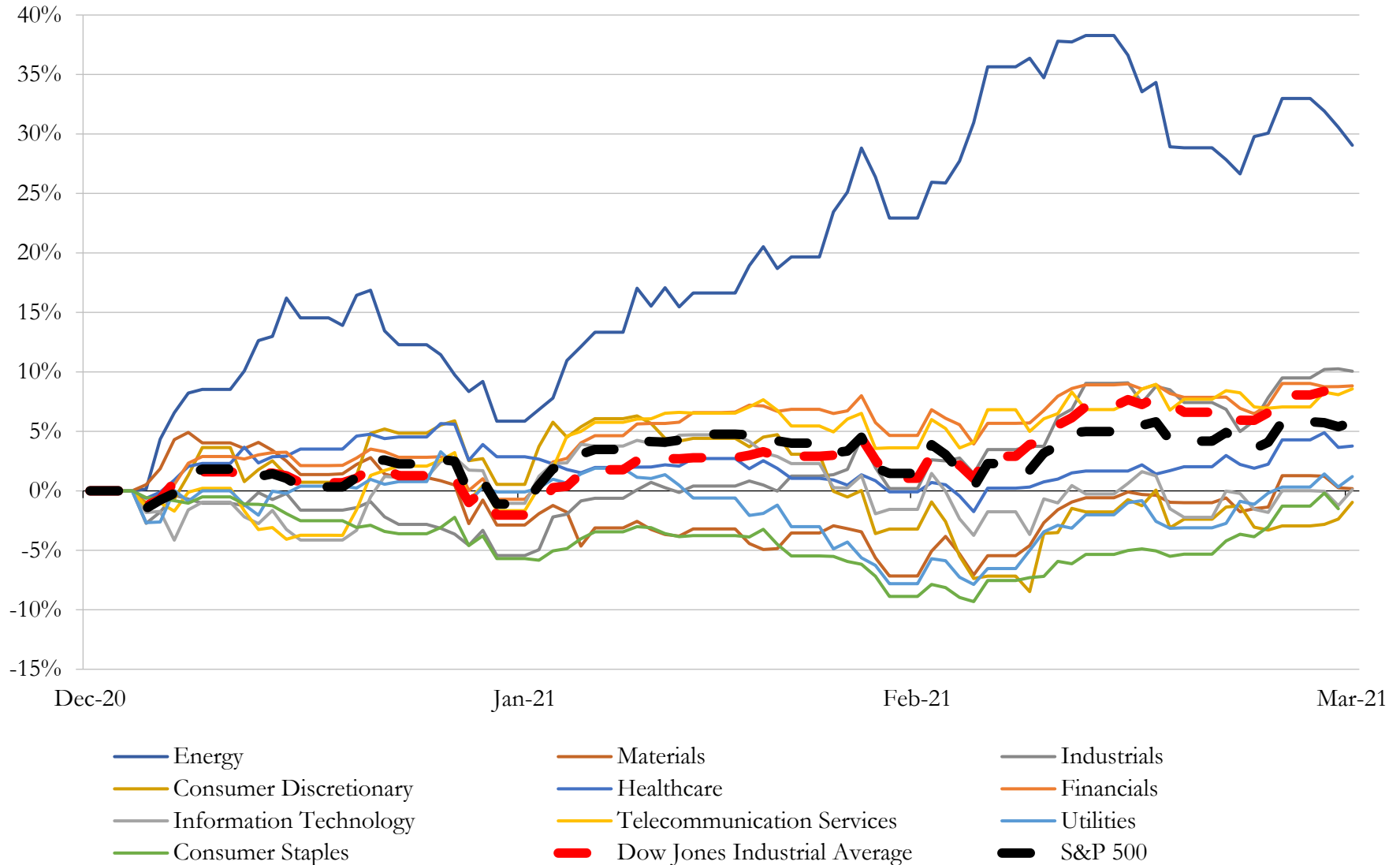
(USD in millions)

Close Date	Target	Acquirer	Implied TEV
Feb-21	Nutrition & Biosciences business of DuPont de Nemours, Inc.	International Flavors & Fragrances Inc.	\$26,542
Mar-20	BioPharma Business of General Electric Company (nka:Cytiva)	Danaher Corporation	\$21,152
Oct-20	Immunomedics, Inc.	Gilead Sciences, Inc.	\$19,916
Oct-20	Livongo Health, Inc.	Teladoc Health, Inc.	\$18,257
Nov-20	MyoKardia, Inc.	Bristol-Myers Squibb Company	\$12,239
Oct-20	Momenta Pharmaceuticals, Inc.	Johnson & Johnson	\$5,930
Oct-20	U.S. State and Local Health and Human Services Business of DXC Technology	Veritas Capital Fund Management, L.L.C	\$5,000
Apr-20	Forty Seven, Inc.	Gilead Sciences, Inc.	\$4,623
Dec-20	Asklepios BioPharmaceutical, Inc.	Bayer Aktiengesellschaft	\$4,000
Sep-20	Principia Biopharma Inc.	Sanofi	\$3,378
Feb-21	BioTelemetry, Inc.	Philips Holding USA Inc.	\$2,799
Dec-20	VelosBio, Inc.	Merck & Co., Inc.	\$2,696
Mar-21	Viela Bio, Inc.	Horizon Therapeutics USA, Inc.	\$2,676
Oct-20	Aimmune Therapeutics, Inc.	Société des Produits Nestlé S.A.	\$2,232
Apr-20	Ra Pharmaceuticals, Inc.	UCB SA	\$2,170
Jul-20	Corvidia Therapeutics, Inc.	Novo Nordisk A/S	\$2,100
Jan-21	Thrive Earlier Detection Corp.	Exact Sciences Corporation	\$2,034
Feb-21	AeroCare Holdings, Inc.	AdaptHealth Corp.	\$2,026
Mar-21	Oncology Business of Agios Pharmaceuticals, Inc.	Servier Pharmaceuticals LLC	\$2,000
Dec-20	Versant Health, Inc.	MetLife, Inc.	\$1,800
Feb-21	New Hanover Regional Medical Center, Inc.	Novant Health, Inc.	\$1,500
Jul-20	Portola Pharmaceuticals, Inc.	Alexion Pharmaceuticals, Inc.	\$1,457
Oct-20	ArcherDx, Inc.	Invitae Corporation	\$1,391
Oct-20	Disarm Therapeutics, Inc.	Eli Lilly and Company	\$1,360
Dec-20	CarePort Health, LLC	WellSky Corporation	\$1,350
Dec-20	Emisphere Technologies, Inc.	Novo Nordisk A/S	\$1,338
Jan-21	American Renal Associates Holdings, Inc.	Innovative Renal Care, LLC	\$1,265
Mar-21	Preventice Solutions, Inc.	Boston Scientific Corporation	\$1,153
Dec-20	Straight Smile, LLC	DENTSPLY SIRONA Inc.	\$1,059
May-20	21st Century Oncology, Inc.	Genesis Care Pty Ltd	\$1,050

Source: Capital IQ

5 Change in Market Capitalization by Sector

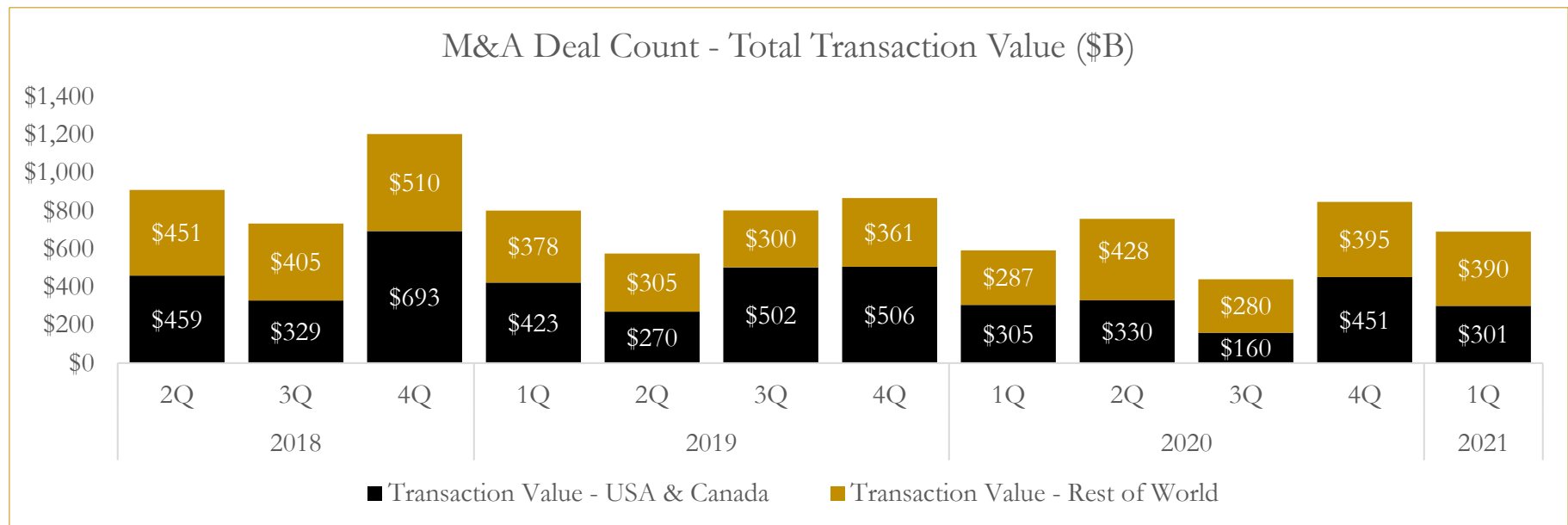
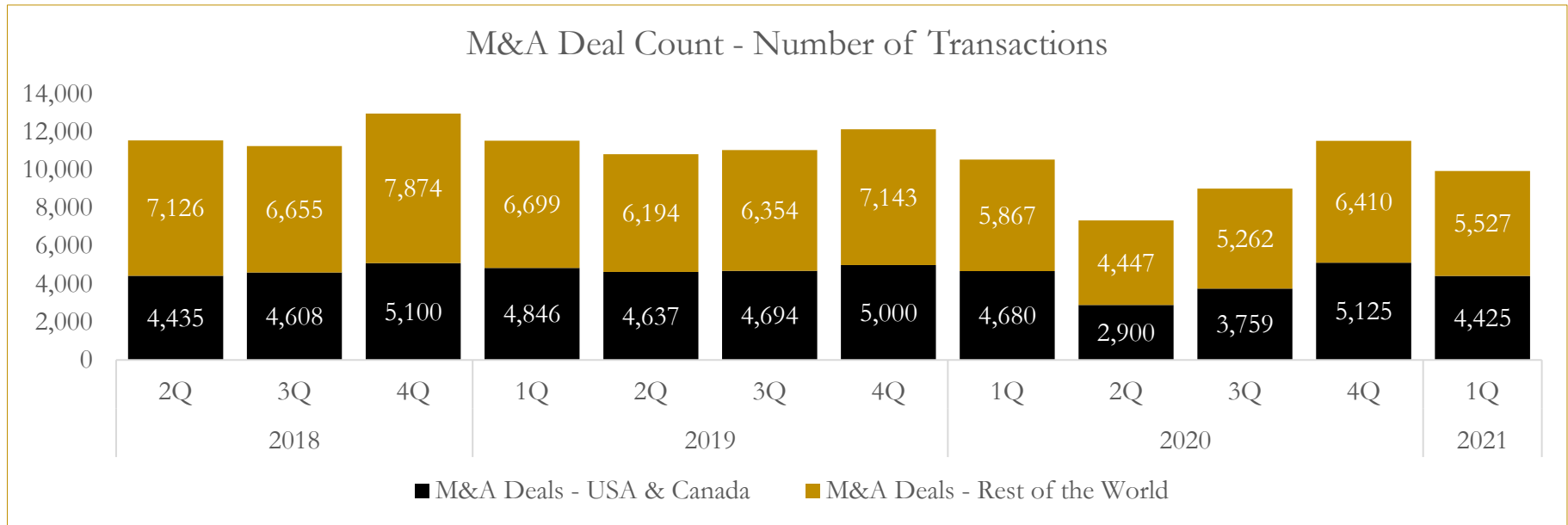
Last Three (3) Months as of March 31, 2021



6

M&A Deal Flow Statistics

Last Three (3) Years as of March 31, 2021



About Houlihan Capital

Houlihan Capital is a leading, solutions-driven valuation, financial advisory and boutique investment banking firm. We pride ourselves on being thought leaders in an ever-changing landscape.

Houlihan Capital is SOC-compliant, a FINRA and SIPC member and committed to the highest levels of professional ethics and standards.

Valuation & Financial Advisory

We provide an array of services that include enterprise valuations, portfolio valuation, valuation of carried interest, transaction opinions, tax and financial reporting compliance, purchase price allocations, and a wide variety of consulting services through our Financial Advisory Group.

Investment Banking

Through our Investment Banking Group, we offer sell-side/buy-side advisory and capital raises. Through our Special Situations desk, we provide services that fit outside the archetypal verticals, including liquidity solutions, transactional advisory, and secondary market advisory and trading.

Litigation Support

Our team provides support for a wide variety of situations including commercial and shareholder disputes, derivatives and structured finance litigation, and fraudulent conveyance.

Contact:

Andrew Smith

President

asmith@houlihancapital.com

(312) 450-8610

Paul Clark

Managing Director

pclark@houlihancapital.com

(312) 450-8656

Michael Norton

Director, Business Development

mnorton@houlihancapital.com

(312) 450-8628

Monica Blocker

Director, Business Development

mblocker@houlihancapital.com

(312) 450-8699