

A photograph of a stage with heavy red curtains. In the foreground, the silhouettes of an audience are visible, looking towards the stage. A semi-transparent white box is overlaid on the lower left portion of the image, containing the text for the industry update.

Industry Update
Media and Entertainment
Q3 2022

1

Financial Performance

Size Profile, LTM Financials, Forward Estimates

(USD in millions, except per share data)

Company Name	Ticker	Size Profile			LTM Operating Data		Forward Estimates		
		Price at 09/30/22	% of 52 Week High	TEV	Total Assets	LTM Revenue	LTM EBITDA	2022 Est. Revenue	2022 Est. EBITDA
Broadcasting									
Warner Bros. Discovery, Inc.	WBD	\$11.50	36.5%	\$84,932	\$142,240	\$19,323	\$3,405	\$45,280	\$9,247
Gray Television, Inc.	GTN	\$14.32	56.7%	\$8,564	\$11,123	\$3,017	\$954	\$3,793	\$1,471
Stolt-Nielsen Limited	SNI	\$20.03	93.7%	\$3,215	\$4,778	\$2,632	\$593	\$2,798	\$698
Entravision Communications Corporation	EVC	\$3.97	42.5%	\$401	\$840	\$852	\$85	\$900	\$99
Cable and Satellite									
AT&T Inc.	T	\$15.34	55.8%	\$282,615	\$426,433	\$156,602	\$52,527	\$126,009	\$41,620
DISH Network Corporation	DISH	\$13.83	29.9%	\$28,042	\$49,858	\$17,437	\$3,368	\$16,848	\$3,054
AMC Networks Inc.	AMCX	\$20.30	39.4%	\$3,438	\$5,794	\$3,065	\$674	\$3,113	\$677
Movies and Entertainment									
The Walt Disney Company	DIS	\$94.33	52.5%	\$224,189	\$204,074	\$81,106	\$11,926	\$86,690	\$16,319
Netflix, Inc.	NFLX	\$235.44	33.6%	\$113,372	\$46,351	\$31,031	\$6,229	\$31,656	\$6,425
AMC Entertainment Holdings, Inc.	AMC	\$6.97	15.2%	\$12,592	\$9,818	\$3,887	\$93	\$4,259	\$203
Lions Gate Entertainment Corp.	LGF.A	\$7.43	39.4%	\$4,977	\$9,088	\$3,597	\$280	\$3,682	\$292
Cinemark Holdings, Inc.	CNK	\$12.11	52.3%	\$4,271	\$5,004	\$2,306	\$310	\$2,540	\$378

Source: Capital IQ

Financial Performance (cont.)

Size Profile, LTM Financials, Forward Estimates

(USD in millions, except per share data)

Company Name	Ticker	Size Profile			LTM Operating Data		Forward Estimates		
		Price at 09/30/22	% of 52 Week High	TEV	Total Assets	LTM Revenue	LTM EBITDA	2022 Est. Revenue	2022 Est. EBITDA
Publishing									
The E.W. Scripps Company	SSP	\$11.27	47.7%	\$4,653	\$6,536	\$2,338	\$545	\$2,553	\$700
The New York Times Company	NYT	\$28.75	51.2%	\$4,433	\$2,513	\$2,168	\$290	\$2,297	\$287
Gannett Co., Inc.	GCI	\$1.53	22.0%	\$1,617	\$2,654	\$3,123	\$375	\$3,000	\$273
Scholastic Corporation	SCHL	\$30.76	63.7%	\$961	\$1,932	\$1,646	\$114	\$0	\$0

Source: Capital IQ

2

Valuation Metrics

Return Profile, Trading Multiples

Company Name	Ticker	Return Profile						Trading Multiples	
		Return on Assets	Return on Equity	Revenue Growth	EBITDA Margin	EBITDA Growth	5-yr Beta	TEV / LTM Revenue	TEV / LTM EBITDA
Broadcasting									
Warner Bros. Discovery, Inc.	WBD	-0.2%	-8.0%	71.0%	17.6%	-10.1%	1.4x	4.4x	24.9x
Gray Television, Inc.	GTN	4.4%	7.0%	21.3%	31.6%	-1.8%	1.7x	2.8x	9.0x
Stolt-Nielsen Limited	SNI	4.7%	14.1%	27.3%	22.5%	40.7%	0.4x	1.2x	5.5x
Entravision Communications Corporation	EVC	4.6%	9.7%	51.6%	10.0%	1.7%	1.0x	0.5x	4.7x
	Mean	3.4%	5.7%	42.8%	20.4%	7.6%	1.1x	2.2x	11.0x
	Median	4.5%	8.4%	39.4%	20.1%	0.0%	1.2x	2.0x	7.2x
Cable and Satellite									
AT&T Inc.	T	4.2%	11.3%	-1.9%	33.5%	6.3%	0.7x	1.8x	5.4x
(Invalid Identifier)	CMCS.A	N/A	N/A	N/A	N/A	N/A	(Invalid Identifier)	N/A	N/A
DISH Network Corporation	DISH	3.7%	13.4%	-3.5%	19.3%	-21.2%	1.8x	1.6x	8.3x
AMC Networks Inc.	AMCX	6.4%	29.1%	5.8%	22.0%	-28.7%	1.1x	1.1x	5.1x
	Mean	4.8%	17.9%	0.1%	24.9%	-14.5%	1.2x	1.5x	6.3x
	Median	4.2%	13.4%	-1.9%	22.0%	-21.2%	1.1x	1.6x	5.4x

Source: Capital IQ

Valuation Metrics (cont.)

Return Profile, Trading Metrics

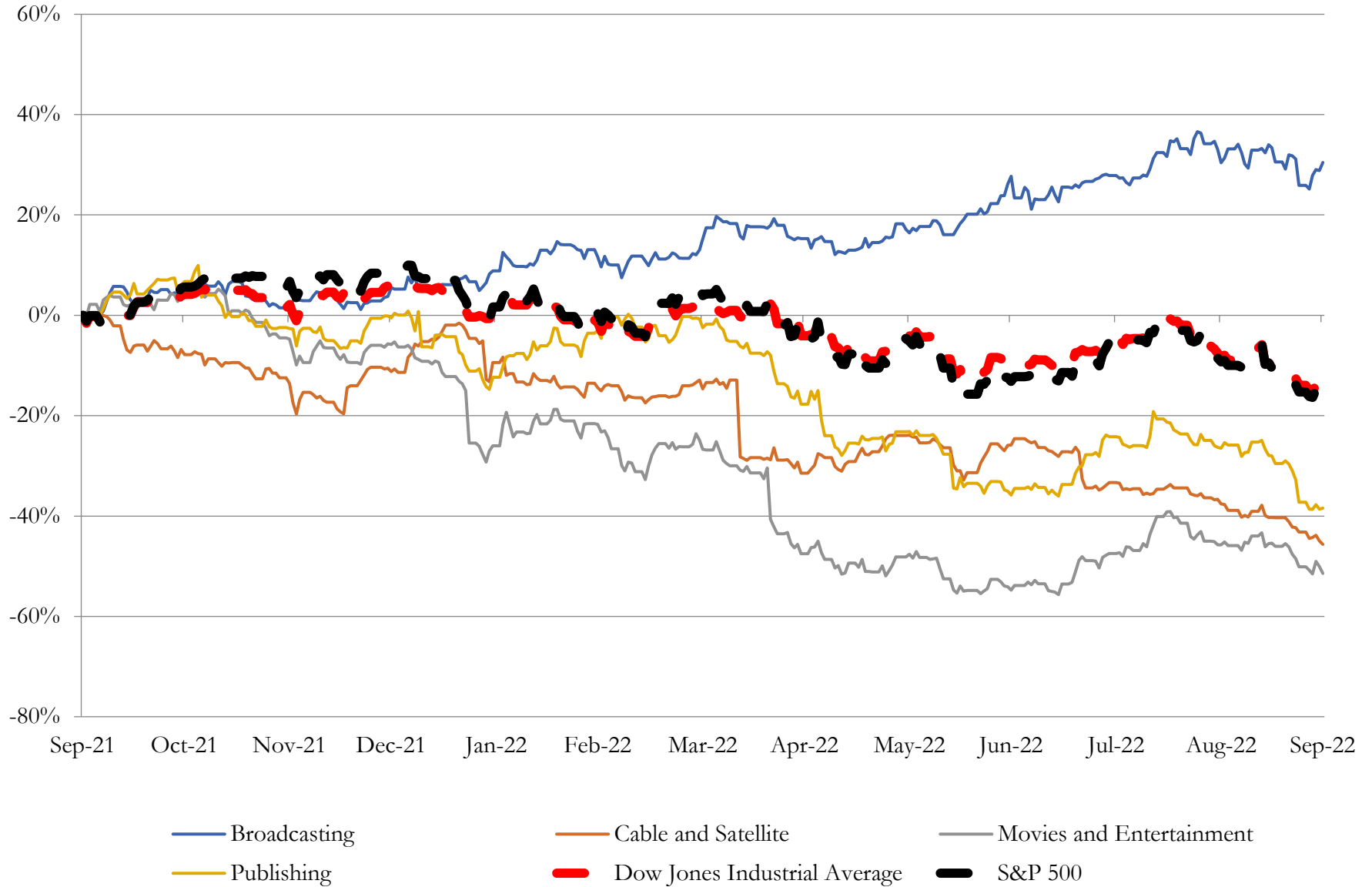
Company Name	Ticker	Return Profile					Trading Multiples		
		Return on Assets	Return on Equity	Revenue Growth	EBITDA Margin	EBITDA Growth	5-yr Beta	TEV / LTM Revenue	TEV / LTM EBITDA
Movies and Entertainment									
The Walt Disney Company	DIS	2.1%	3.4%	27.5%	14.7%	55.8%	1.2x	2.8x	18.8x
Netflix, Inc.	NFLX	8.5%	30.9%	12.5%	20.1%	0.3%	1.2x	3.7x	18.2x
AMC Entertainment Holdings, Inc.	AMC	-1.8%	N/A	344.2%	2.4%	N/A	1.9x	3.2x	135.1x
Lions Gate Entertainment Corp.	LGF.A	0.1%	-9.3%	7.1%	7.8%	-30.0%	1.5x	1.4x	17.8x
Cinemark Holdings, Inc.	CNK	0.7%	-70.2%	324.9%	13.5%	N/A	2.1x	1.9x	13.8x
	Mean	1.9%	-11.3%	143.3%	11.7%	8.7%	1.6x	2.6x	40.7x
	Median	0.7%	-3.0%	27.5%	13.5%	0.3%	1.5x	2.8x	18.2x
Publishing									
The E.W. Scripps Company	SSP	3.7%	9.1%	6.7%	23.3%	-13.2%	1.8x	2.0x	8.5x
The New York Times Company	NYT	5.9%	12.9%	15.3%	13.4%	0.6%	1.0x	2.0x	15.3x
Gannett Co., Inc.	GCI	4.3%	-13.2%	-4.5%	12.0%	-25.2%	2.4x	0.5x	4.3x
Scholastic Corporation	SCHL	2.5%	5.2%	22.4%	7.0%	43.5%	1.0x	0.6x	8.4x
	Mean	4.1%	3.5%	10.0%	13.9%	1.4%	1.6x	1.3x	9.1x
	Median	4.0%	7.1%	11.0%	12.7%	-6.3%	1.4x	1.3x	8.5x

Source: Capital IQ

3

LTM Equity Performance

Major Indexes



Source: Capital IQ

4

Recent M&A Activity

Last Twelve (12) Months as of September 30, 2022

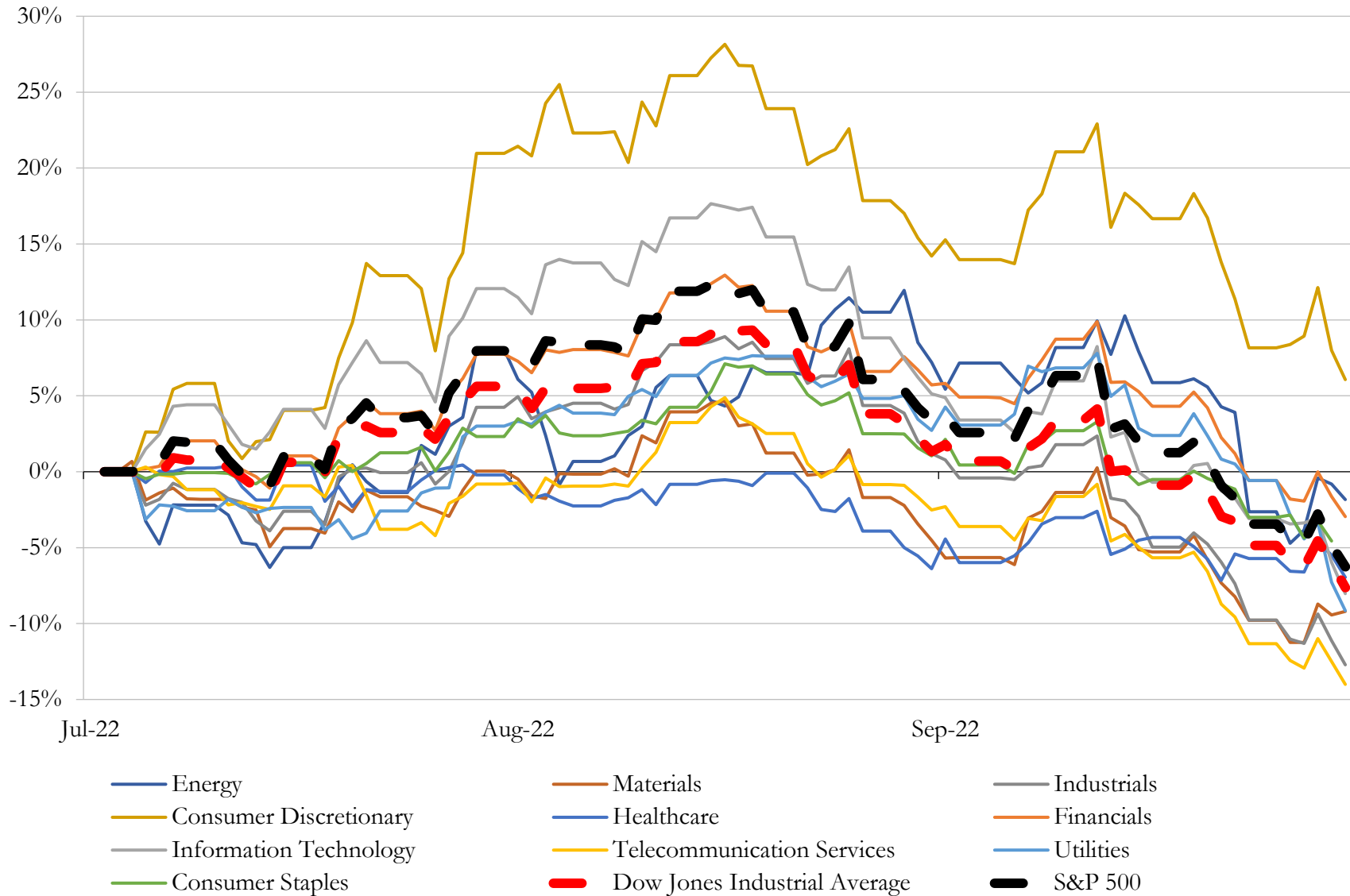
(USD in millions)

Close Date	Target	Acquirer	Implied TEV
Apr-22	Warner Media, LLC	Discovery, Inc. (nka:Warner Bros. Discovery, Inc.)	\$103,966
May-22	Zynga Inc.	Take-Two Interactive Software, Inc.	\$12,714
Mar-22	MGM Holdings Inc.	Amazon.com, Inc.	\$8,450
Aug-22	PDB Sports, Ltd.	N/A	\$4,650
Jul-22	Bungie, Inc.	Sony Interactive Entertainment LLC	\$3,700
Dec-21	Meredith Holdings Corporation	Dotdash Media Inc.	\$2,674
Dec-21	CBS Studios Inc.	Hackman Capital Partners, LLC; Square Mile Capital Management LLC	\$1,850
Nov-21	International Data Group, Inc.	Blackstone Inc.	\$1,300
Jan-22	Scripted Business of IMG Worldwide, LLC	CJ ENM CO., Ltd.	\$969
Nov-21	Unknown Worlds Entertainment Inc.	KRAFTON, Inc.	\$750
Feb-22	The Athletic Media Company	The New York Times Company	\$550
Jan-22	Flow Commerce Inc.	Global-e Online Ltd.	\$545
Aug-22	Axios Media Inc.	Cox Enterprises, Inc.	\$525
Dec-21	Theory Entertainment LLC	Warner Music Inc.; MM Investment LLC	\$397
Apr-22	Wurl, Inc.	AppLovin Corporation	\$388
Aug-22	Quixote Studios LLC	Hudson Pacific Properties, Inc.	\$360
May-22	Industrial Media Inc.	Sony Pictures Television, Inc.	\$350
Feb-22	The Giving Block Inc.	Shift4 Payments, Inc.	\$302
Aug-22	Crystal Dynamics, Inc./Eidos Interactive Corporation	Embracer Group AB (publ)	\$300
Dec-21	Complex Media, Inc.	BuzzFeed, Inc.	\$300
Aug-22	Redbox Entertainment Inc.	Chicken Soup for the Soul Entertainment, Inc.	\$282
Sep-22	Diamond Baseball Holdings, LLC	Silver Lake Management, L.L.C.	\$280
Feb-22	YourPeople, Inc.	TriNet Group, Inc.	\$210
May-22	Pond5 Inc.	Shutterstock, Inc.	\$210
Jun-22	Kinetic Content/Left/Right/44 Blue Productions/Half Yard	Chernin Entertainment LLC	\$200
Nov-21	SmartEquip, Inc.	Ritchie Bros. Auctioneers Incorporated	\$176
Mar-22	Research Horizons, LLC d/b/a Phoenix Marketing International	MarketCast LLC	\$150
May-22	D&D Beyond	Hasbro, Inc.	\$146
Jan-22	Audiobooks Inc.	Storytel AB (publ)	\$135
Jun-22	Findaway World, LLC	Spotify Technology S.A.	\$134

Source: Capital IQ

5 Change in Market Capitalization by Sector

Last Three (3) Months as of September 30, 2022

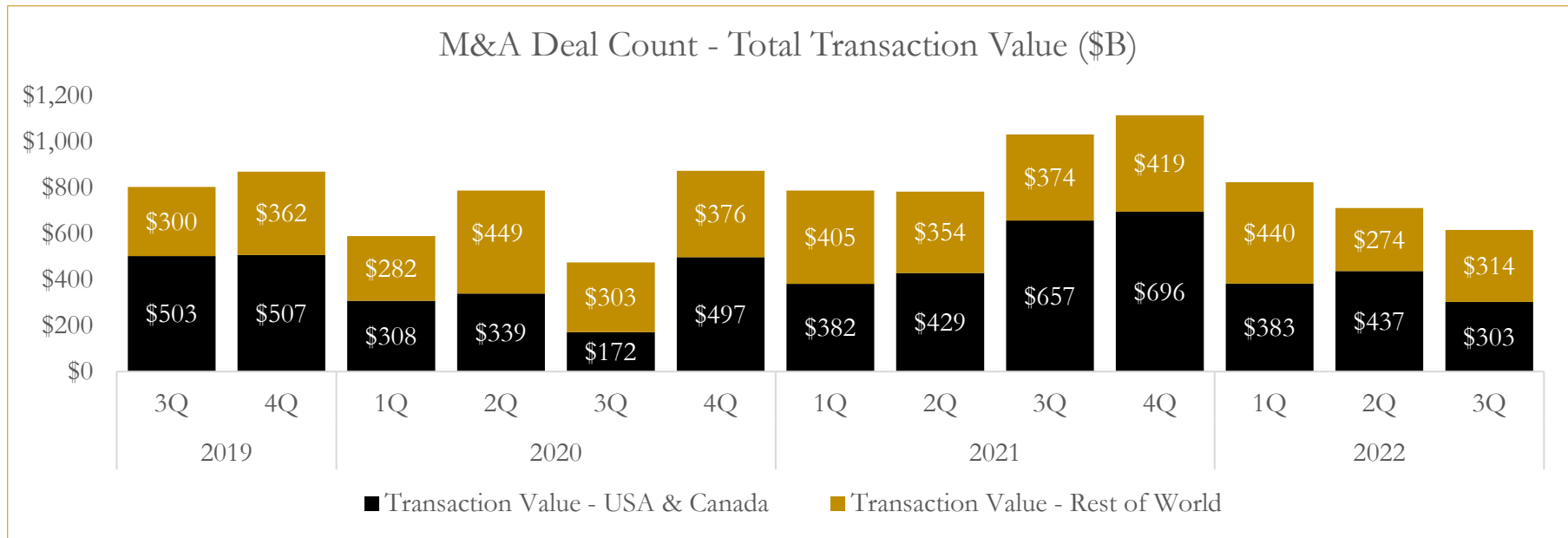
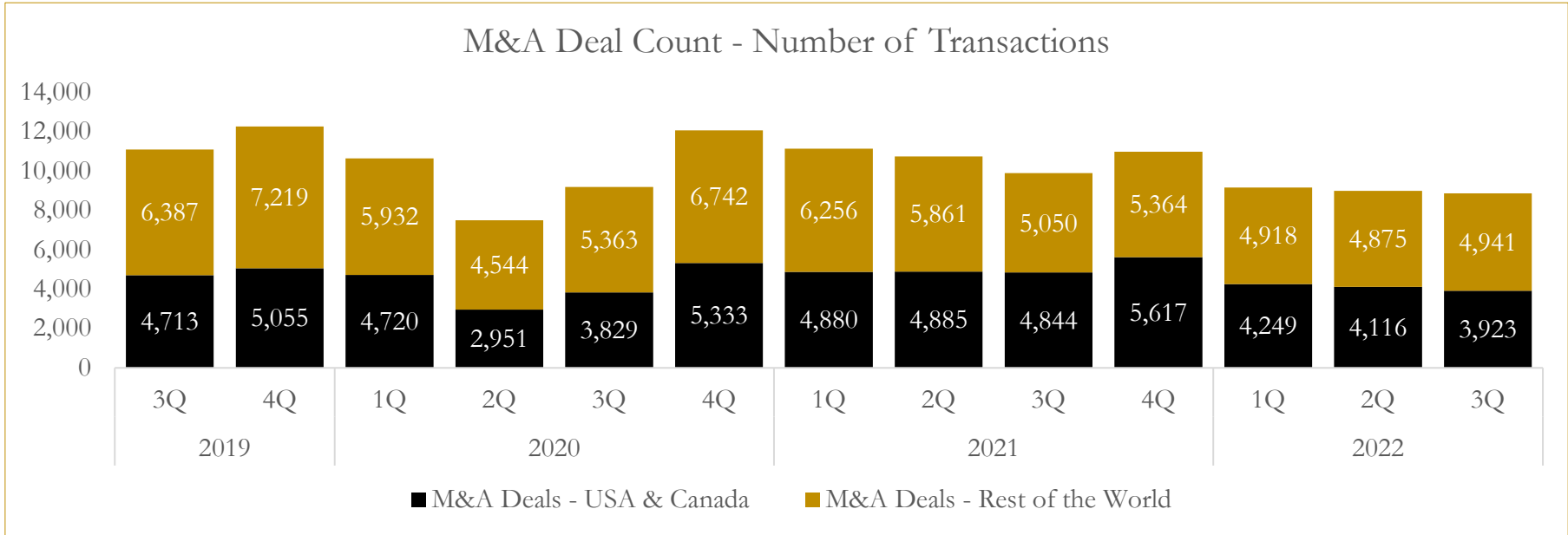


Source: Capital IQ

6

M&A Deal Flow Statistics

Last Three (3) Years as of September 30, 2022



Source: Capital IQ

About Houlihan Capital

Houlihan Capital is a leading, solutions-driven valuation, financial advisory and boutique investment banking firm. We pride ourselves on being thought leaders in an ever-changing landscape.

Houlihan Capital is SOC-compliant, a FINRA and SIPC member and committed to the highest levels of professional ethics and standards.

Valuation & Financial Advisory

We provide an array of services that include enterprise valuations, portfolio valuation, valuation of carried interest, transaction opinions, tax and financial reporting compliance, purchase price allocations, and a wide variety of consulting services through our Financial Advisory Group.

Investment Banking

Through our Investment Banking Group, we offer sell-side/buy-side advisory and capital raises. Through our Special Situations desk, we provide services that fit outside the archetypal verticals, including liquidity solutions, transactional advisory, and secondary market advisory and trading.

Litigation Support

Our team provides support for a wide variety of situations including commercial and shareholder disputes, derivatives and structured finance litigation, and fraudulent conveyance.

Contact:

Andrew Smith

President

asmith@houlihancapital.com

(312) 450-8610

Paul Clark

Managing Director

pclark@houlihancapital.com

(312) 450-8656

Michael Norton

Director, Business Development

mnorton@houlihancapital.com

(312) 450-8628

Monica Blocker

Director, Business Development

mblocker@houlihancapital.com

(312) 450-8699