



Industry Update  
**Oil and Gas**  
Q3 2022

## 1

# Financial Performance

## Size Profile, LTM Financials, Forward Estimates

(USD in millions, except per share data)

Company Name	Ticker	Size Profile			LTM Operating Data		Forward Estimates		
		Price at 06/30/22	% of 52 Week High	TEV	Total Assets	LTM Revenue	LTM EBITDA	2022 Est. Revenue	2022 Est. EBITDA
<b>Integrated</b>									
Exxon Mobil Corporation	XOM	\$85.64	81.1%	\$404,593	\$354,771	\$309,269	\$53,895	\$393,026	\$93,754
Chevron Corporation	CVX	\$144.78	79.4%	\$296,551	\$249,048	\$176,844	\$38,522	\$216,254	\$64,217
ConocoPhillips	COP	\$89.81	72.4%	\$120,169	\$93,308	\$54,900	\$25,498	\$76,129	\$36,929
Occidental Petroleum Corporation	OXY	\$58.88	79.5%	\$91,331	\$74,222	\$29,012	\$15,392	\$35,773	\$22,969
Hess Corporation	HES	\$105.94	80.6%	\$38,462	\$19,798	\$7,692	\$3,804	\$10,958	\$6,230
Murphy Oil Corporation	MUR	\$30.19	65.9%	\$7,566	\$10,542	\$3,080	\$1,488	\$3,511	\$2,355
<b>Refining and Marketing</b>									
Marathon Petroleum Corporation	MPC	\$82.21	71.9%	\$70,007	\$90,952	\$135,923	\$8,572	\$160,572	\$16,119
Valero Energy Corporation	VLO	\$106.28	72.4%	\$56,101	\$60,402	\$125,765	\$6,673	\$169,787	\$13,220
Phillips 66	PSX	\$81.99	73.7%	\$51,663	\$60,638	\$125,846	\$3,137	\$156,970	\$10,709
PBF Energy Inc.	PBF	\$29.02	65.8%	\$7,599	\$12,948	\$31,470	\$690	\$39,868	\$2,596
CVR Energy, Inc.	CVI	\$33.50	76.8%	\$4,336	\$4,345	\$8,152	\$725	\$9,526	\$1,285
Delek US Holdings, Inc.	DK	\$25.84	73.3%	\$3,639	\$7,947	\$12,715	\$213	\$16,688	\$969

Source: Capital IQ

## Financial Performance (cont.)

Size Profile, LTM Financials, Forward Estimates

(USD in millions, except per share data)

Company Name	Ticker	Size Profile			LTM Operating Data		Forward Estimates		
		Price at 06/30/22	% of 52 Week High	TEV	Total Assets	LTM Revenue	LTM EBITDA	2022 Est. Revenue	2022 Est. EBITDA
<b>Exploration and Production</b>									
EOG Resources, Inc.	EOG	\$110.44	74.6%	\$62,051	\$38,097	\$22,488	\$9,640	\$24,103	\$16,702
Pioneer Natural Resources Company	PXD	\$223.08	77.3%	\$54,454	\$36,860	\$20,953	\$9,187	\$26,418	\$13,785
Devon Energy Corporation	DVN	\$55.11	69.4%	\$39,635	\$21,778	\$14,937	\$6,653	\$17,049	\$9,795
Continental Resources, Inc.	CLR	\$65.35	86.6%	\$30,100	\$19,673	\$6,477	\$4,831	\$10,081	\$8,274
Diamondback Energy, Inc.	FANG	\$121.15	74.7%	\$26,894	\$23,331	\$7,606	\$5,172	\$9,520	\$7,325
Southwestern Energy Company	SWN	\$6.25	63.3%	\$11,791	\$11,847	\$8,538	-\$1,707	\$7,888	\$3,321
Matador Resources Company	MTDR	\$46.59	68.7%	\$7,091	\$4,567	\$2,034	\$1,378	\$3,002	\$2,232

Source: Capital IQ

## 2

## Valuation Metrics

## Return Profile, Trading Multiples

Company Name	Ticker	Return Profile					Trading Multiples		
		Return on Assets	Return on Equity	Revenue Growth	EBITDA Margin	EBITDA Growth	5-yr Beta	TEV / LTM Revenue	TEV / LTM EBITDA
<b>Integrated</b>									
Exxon Mobil Corporation	XOM	6.1%	15.6%	69.9%	17.4%	185.0%	1.1x	1.3x	7.5x
Chevron Corporation	CVX	5.5%	14.7%	84.5%	21.8%	219.0%	1.1x	1.7x	7.7x
ConocoPhillips	COP	12.9%	27.8%	141.1%	46.4%	330.1%	1.4x	2.2x	4.7x
Occidental Petroleum Corporation	OXY	6.0%	34.1%	75.9%	53.1%	157.2%	1.9x	3.1x	5.9x
Hess Corporation	HES	7.5%	15.5%	51.1%	49.5%	47.4%	1.7x	5.0x	10.1x
Murphy Oil Corporation	MUR	3.9%	6.0%	76.6%	48.3%	286.5%	2.6x	2.5x	5.1x
	<b>Mean</b>	<b>7.0%</b>	<b>19.0%</b>	<b>83.2%</b>	<b>39.4%</b>	<b>204.2%</b>	<b>1.6x</b>	<b>2.6x</b>	<b>6.8x</b>
	<b>Median</b>	<b>6.0%</b>	<b>15.5%</b>	<b>76.3%</b>	<b>47.4%</b>	<b>202.0%</b>	<b>1.5x</b>	<b>2.3x</b>	<b>6.7x</b>
<b>Refining and Marketing</b>									
Marathon Petroleum Corporation	MPC	3.7%	12.8%	92.9%	6.3%	115.4%	1.8x	0.5x	8.2x
Valero Energy Corporation	VLO	4.7%	14.7%	112.9%	5.3%	175.6%	1.8x	0.4x	8.4x
Phillips 66	PSX	1.7%	13.6%	93.9%	2.5%	N/A	1.4x	0.4x	16.5x
PBF Energy Inc.	PBF	2.2%	14.2%	113.2%	2.2%	N/A	2.2x	0.2x	11.0x
CVR Energy, Inc.	CVI	6.5%	27.6%	91.2%	8.9%	N/A	1.6x	0.5x	6.0x
Delek US Holdings, Inc.	DK	-0.4%	-9.3%	61.5%	1.7%	19236.4%	1.6x	0.3x	17.1x
	<b>Mean</b>	<b>3.1%</b>	<b>12.3%</b>	<b>94.3%</b>	<b>4.5%</b>	<b>6509.1%</b>	<b>1.7x</b>	<b>0.4x</b>	<b>11.2x</b>
	<b>Median</b>	<b>2.9%</b>	<b>13.9%</b>	<b>93.4%</b>	<b>3.9%</b>	<b>175.6%</b>	<b>1.7x</b>	<b>0.4x</b>	<b>9.7x</b>

Source: Capital IQ

## Valuation Metrics (cont.)

### Return Profile, Trading Metrics

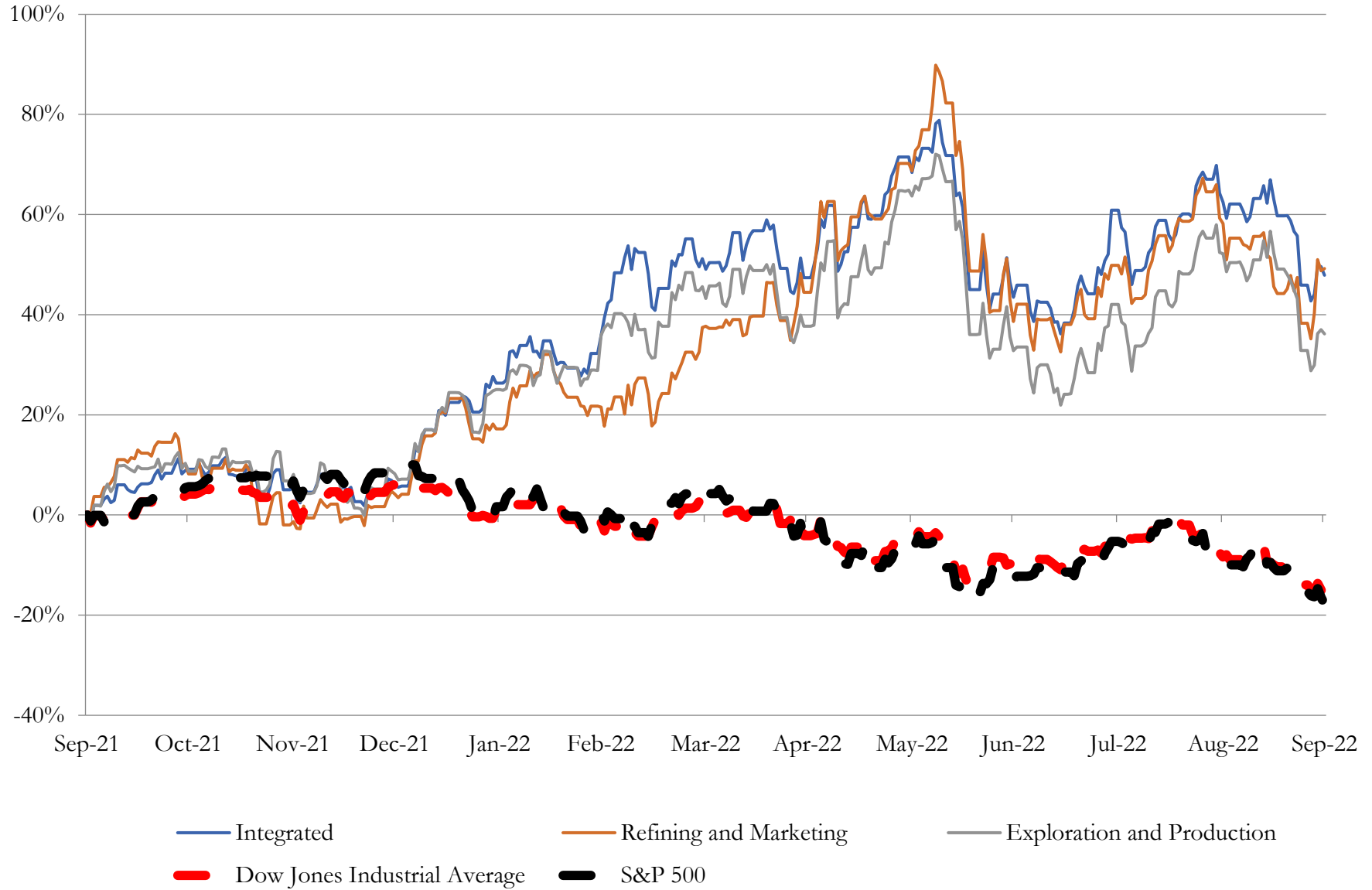
Company Name	Ticker	Return Profile					Trading Multiples		
		Return on Assets	Return on Equity	Revenue Growth	EBITDA Margin	EBITDA Growth	5-yr Beta	TEV / LTM Revenue	TEV / LTM EBITDA
<b>Exploration and Production</b>									
EOG Resources, Inc.	EOG	9.6%	20.7%	114.1%	42.9%	125.8%	1.7x	2.8x	6.4x
Pioneer Natural Resources Company	PXD	12.1%	20.1%	159.3%	43.8%	602.4%	1.6x	2.6x	5.9x
Devon Energy Corporation	DVN	13.1%	40.3%	163.1%	44.5%	619.2%	2.6x	2.7x	6.0x
Continental Resources, Inc.	CLR	10.6%	26.8%	126.6%	74.6%	146.3%	2.6x	4.6x	6.2x
Diamondback Energy, Inc.	FANG	10.6%	22.4%	158.8%	68.0%	320.8%	2.2x	3.5x	5.2x
Southwestern Energy Company	SWN	-17.8%	-1190.6%	206.2%	-20.0%	N/A	1.2x	1.4x	-6.9x
Matador Resources Company	MTDR	15.2%	40.6%	129.6%	67.7%	235.8%	3.8x	3.5x	5.1x
	<b>Mean</b>	<b>7.7%</b>	<b>-145.7%</b>	<b>151.1%</b>	<b>45.9%</b>	<b>341.7%</b>	<b>2.2x</b>	<b>3.0x</b>	<b>4.0x</b>
	<b>Median</b>	<b>10.6%</b>	<b>22.4%</b>	<b>158.8%</b>	<b>44.5%</b>	<b>278.3%</b>	<b>2.2x</b>	<b>2.8x</b>	<b>5.9x</b>

Source: Capital IQ

# 3

## LTM Equity Performance

### Major Indexes



Source: Capital IQ

## 4

## Recent M&amp;A Activity

*Last Twelve (12) Months as of September 30, 2022*

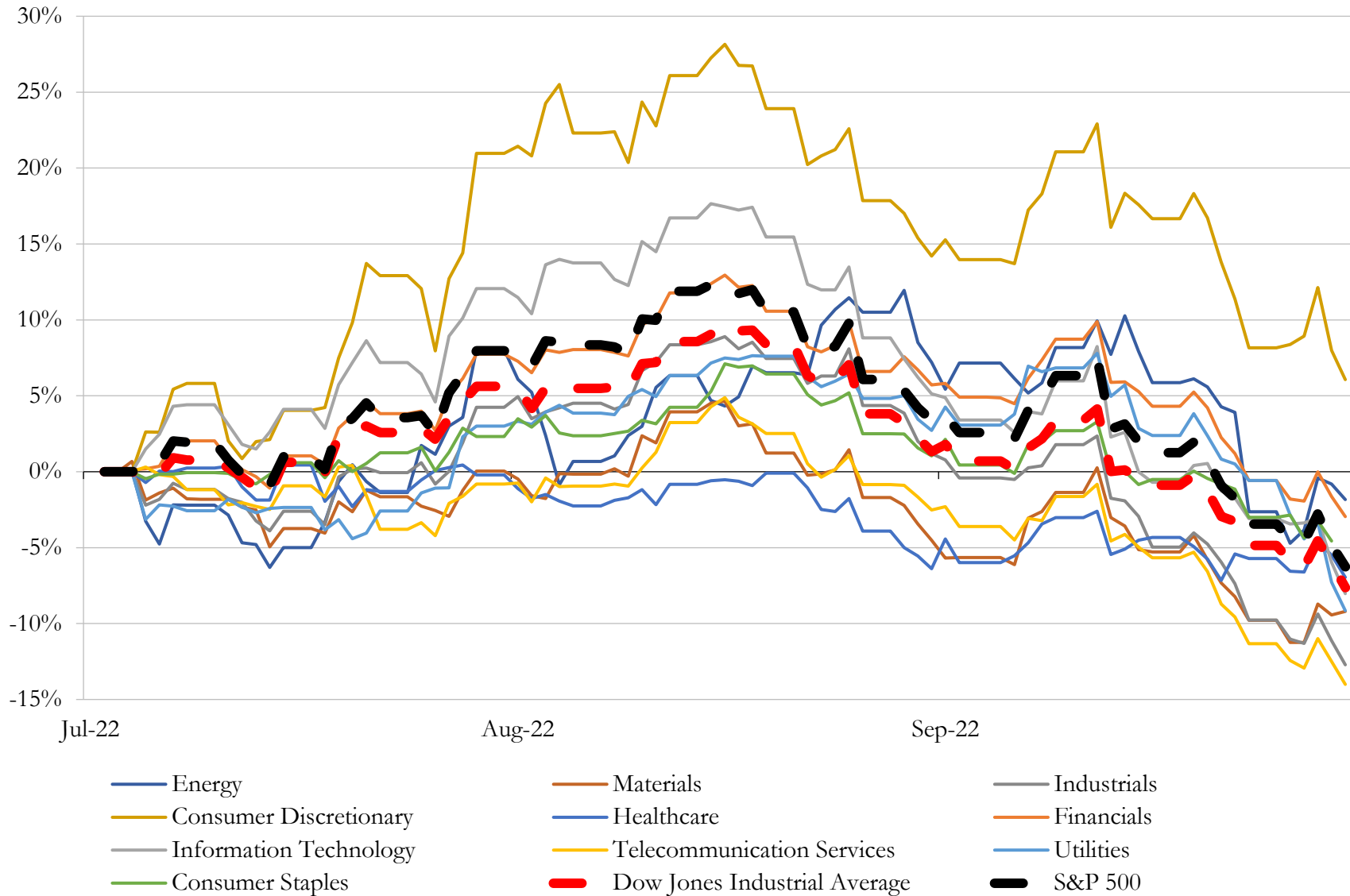
(USD in millions)

Close Date	Target	Acquirer	Implied TEV
Dec-21	Substantially All of the Assets of SWEPI LP	ConocoPhillips Company	\$9,500
Oct-21	Cimarex Energy Co.	Cabot Oil & Gas Corporation (nka:Coterra Energy Inc.)	\$9,058
Dec-21	Enable Midstream Partners, LP	Energy Transfer LP	\$7,260
Feb-22	Navitas Midstream Partners, LLC	Enterprise Products Operating LLC	\$3,250
Sep-21	Indigo Natural Resources LLC	Southwestern Energy Company	\$3,111
Dec-21	Jagged Peak Energy LLC And Oil And Gas Assets In Delaware Basin	Continental Resources, Inc.	\$3,100
Jul-21	Alta Resources, LLC	EQT Corporation	\$2,994
Jun-22	Renewable Energy Group, Inc.	Chevron Corporation	\$2,778
Nov-21	Vine Energy Inc.	Chesapeake Energy Corporation	\$2,320
Dec-21	Dominion Energy Questar Pipeline Services/Dominion Energy Questar	Southwest Gas Holdings, Inc.	\$1,975
Dec-21	GEP Haynesville, LLC	Southwestern Energy Company	\$1,850
Feb-22	Oasis Midstream Partners LP	Crestwood Equity Partners LP	\$1,808
Mar-22	EP Energy Corporation	Verdun Oil Company II LLC	\$1,445
May-22	Great Western Petroleum, LLC	PDC Energy, Inc.	\$1,310
Nov-21	Extraction Oil & Gas, Inc.	Bonanza Creek Energy, Inc. (nka:Civitas Resources, Inc.)	\$1,231
Jul-21	Stagecoach Gas Services LLC	Kinder Morgan Operating L.P. "A"	\$1,225
Jan-22	Deer Park Refining Limited Partnership	P.M.I. Norteamérica, S.A. de C.V.	\$1,192
Nov-21	Crestone Peak Resources LLC	Bonanza Creek Energy, Inc. (nka:Civitas Resources, Inc.)	\$1,062
Jul-21	Diamond S Shipping Inc.	International Seaways, Inc.	\$1,026
Aug-21	Pine Prairie and Southern Pines Natural Gas Storage Facilities of Plains All	Hartree Partners, LP	\$850
Mar-22	Certain Non-Core Mineral Rights of APA Corporation in the Delaware Basin	N/A	\$805
Jun-22	Premier Barnett Shale Upstream and Midstream Assets in North Texas	BKV Corporation	\$800
Oct-21	Williston Basin Assets of QEP Resources, Inc.	Oasis Petroleum Inc. (nka:Chord Energy Corporation)	\$745
Mar-22	Sinclair Transportation Company	Holly Energy Partners, L.P.	\$744
Apr-22	Assets of Bighorn Permian Resources, LLC	Earthstone Energy Holdings, LLC	\$719
Mar-22	Oil Assets in Uinta Basin	Crescent Energy Company	\$690
Aug-21	Hawkwood Energy LLC	WildFire Energy I, LLC	\$650
Jun-22	3 Bear Delaware Operating - NM LLC	DKL Delaware Gathering, LLC	\$625
Oct-21	Leasehold Interests and Related Oil, Gas, and Infrastructure Assets of Primexx	Callon Petroleum Operating Company	\$606
Feb-22	Assets located in the northern Delaware Basin of New Mexico of Chisholm	Earthstone Energy, Inc.	\$604

Source: Capital IQ

# 5 Change in Market Capitalization by Sector

Last Three (3) Months as of September 30, 2022



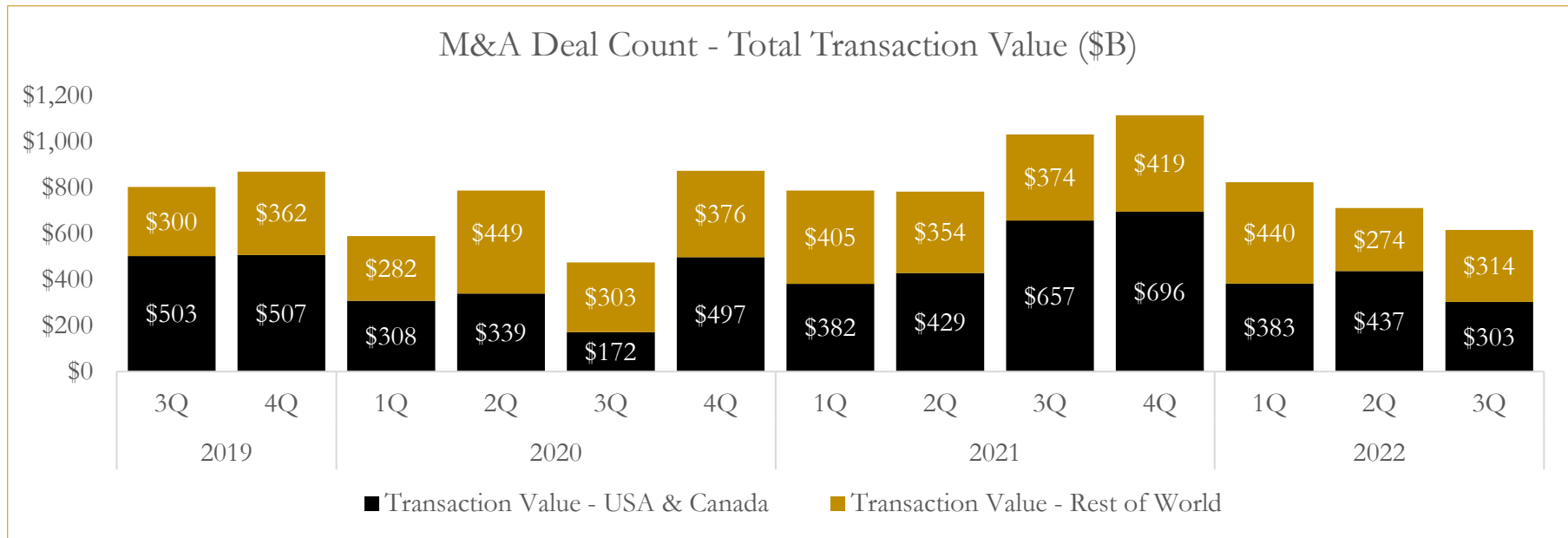
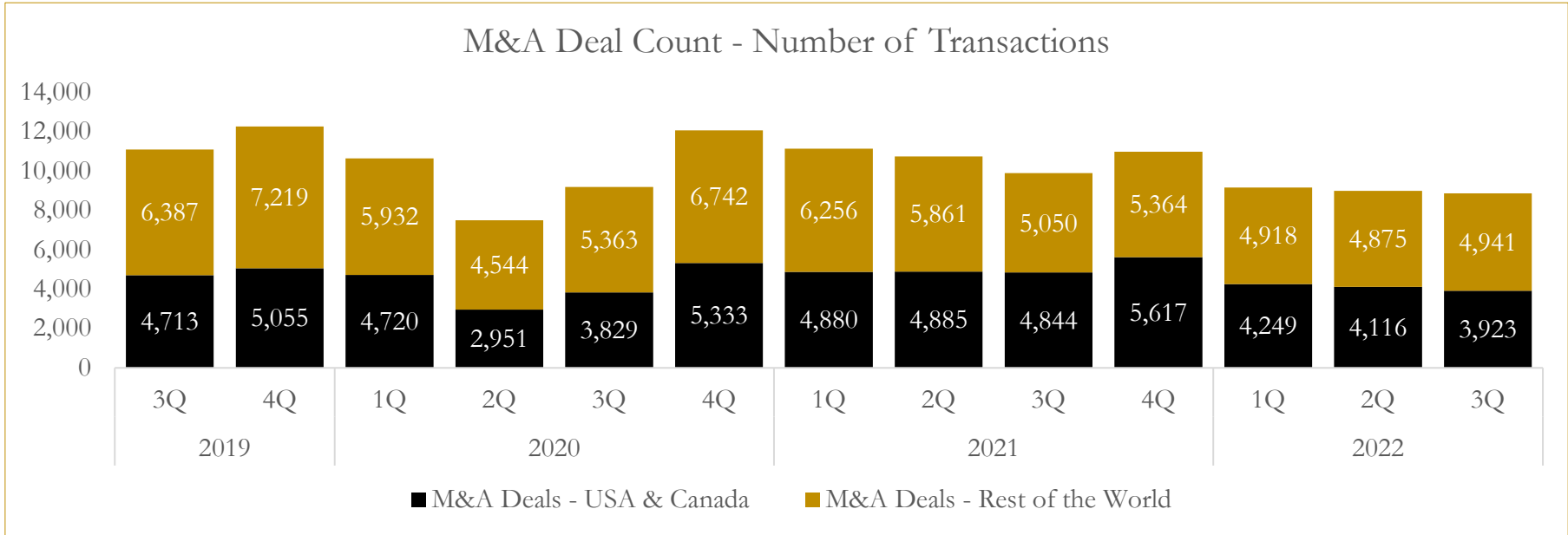
Source: Capital IQ



# 6

## M&A Deal Flow Statistics

Last Three (3) Years as of September 30, 2022



Source: Capital IQ

## About Houlihan Capital

Houlihan Capital is a leading, solutions-driven valuation, financial advisory and boutique investment banking firm. We pride ourselves on being thought leaders in an ever-changing landscape.

Houlihan Capital is SOC-compliant, a FINRA and SIPC member and committed to the highest levels of professional ethics and standards.

### Valuation & Financial Advisory

We provide an array of services that include enterprise valuations, portfolio valuation, valuation of carried interest, transaction opinions, tax and financial reporting compliance, purchase price allocations, and a wide variety of consulting services through our Financial Advisory Group.

### Investment Banking

Through our Investment Banking Group, we offer sell-side/buy-side advisory and capital raises. Through our Special Situations desk, we provide services that fit outside the archetypal verticals, including liquidity solutions, transactional advisory, and secondary market advisory and trading.

### Litigation Support

Our team provides support for a wide variety of situations including commercial and shareholder disputes, derivatives and structured finance litigation, and fraudulent conveyance.

## Contact:

**Andrew Smith**

President

[asmith@houlihancapital.com](mailto:asmith@houlihancapital.com)

(312) 450-8610

**Paul Clark**

Managing Director

[pclark@houlihancapital.com](mailto:pclark@houlihancapital.com)

(312) 450-8656

**Michael Norton**

Director, Business Development

[mnorton@houlihancapital.com](mailto:mnorton@houlihancapital.com)

(312) 450-8628

**Monica Blocker**

Director, Business Development

[mblocker@houlihancapital.com](mailto:mblocker@houlihancapital.com)

(312) 450-8699