

Industry Update
Power and Utilities
Q3 2022

1

Financial Performance

Size Profile, LTM Financials, Forward Estimates

(USD in millions, except per share data)

Company Name	Ticker	Size Profile			LTM Operating Data		Forward Estimates		
		Price at 09/30/22	% of 52 Week High	TEV	Total Assets	LTM Revenue	LTM EBITDA	2021 Est. Revenue	2021 Est. EBITDA
Electric Utilities									
NextEra Energy, Inc.	NEE	\$78.41	83.7%	\$209,902	\$151,770	\$17,489	\$6,595	\$20,869	\$11,611
Duke Energy Corporation	DUK	\$93.02	80.0%	\$141,188	\$172,383	\$26,586	\$11,817	\$26,831	\$11,838
The Southern Company	SO	\$68.00	84.4%	\$126,987	\$130,769	\$25,859	\$8,899	\$25,493	\$9,677
PG&E Corporation	PCG	\$12.50	92.4%	\$82,728	\$113,541	\$21,627	\$6,811	\$22,241	\$7,666
American Electric Power Company, Inc.	AEP	\$86.45	81.9%	\$80,614	\$90,861	\$17,917	\$6,895	\$17,527	\$6,887
Exelon Corporation	EXC	\$37.46	64.4%	\$74,222	\$92,295	\$37,261	\$7,250	\$18,639	\$7,035
Xcel Energy Inc.	XEL	\$64.00	82.4%	\$57,086	\$59,317	\$13,997	\$4,625	\$13,980	\$4,804
Edison International	EIX	\$56.58	77.2%	\$55,800	\$75,045	\$16,606	\$5,534	\$15,748	\$5,815
ITC Limited	ITC	\$4.08	95.0%	\$48,011	\$0	\$8,341	\$2,798	\$654,157	\$224,685
Entergy Corporation	ETR	\$100.63	79.4%	\$46,942	\$57,828	\$12,349	\$3,589	\$11,989	\$4,194
FirstEnergy Corp.	FE	\$37.00	75.7%	\$41,761	\$45,120	\$11,402	\$3,724	\$11,609	\$3,868
PPL Corporation	PPL	\$25.35	81.8%	\$31,418	\$37,062	\$6,475	\$2,585	\$6,780	\$2,993
Evergy, Inc.	EVERG	\$59.40	81.2%	\$24,818	\$29,189	\$5,409	\$2,258	\$5,417	\$2,280
Pinnacle West Capital Corporation	PNW	\$64.51	80.1%	\$15,687	\$22,501	\$3,952	\$1,636	\$3,815	\$1,462
OGE Energy Corp.	OGE	\$36.46	85.0%	\$11,727	\$12,838	\$2,839	\$1,006	\$3,327	\$1,048
PNM Resources, Inc.	PNM	\$45.73	91.3%	\$8,175	\$8,911	\$1,932	\$672	\$1,838	\$703
Portland General Electric Company	POR	\$43.46	76.2%	\$7,294	\$9,783	\$2,467	\$803	\$2,427	\$851
IDACORP, Inc.	IDA	\$99.01	83.3%	\$6,687	\$7,452	\$1,485	\$476	\$1,442	\$500
Hawaiian Electric Industries, Inc.	HE	\$34.66	77.5%	\$6,497	\$16,002	\$3,208	\$660	\$3,047	\$605
ALLETE, Inc.	ALE	\$50.05	72.9%	\$5,398	\$6,839	\$1,501	\$394	\$1,482	\$475
Otter Tail Corporation	OTTR	\$61.52	74.6%	\$3,438	\$2,876	\$1,424	\$458	\$1,494	\$516
Unitil Corporation	UTL	\$46.45	76.0%	\$1,306	\$1,547	\$529	\$141	\$499	\$149

Source: Capital IQ

Financial Performance (cont.)

Size Profile, LTM Financials, Forward Estimates

(USD in millions, except per share data)

Company Name	Ticker	Size Profile			LTM Operating Data		Forward Estimates		
		Price at 09/30/22	% of 52 Week High	TEV	Total Assets	LTM Revenue	LTM EBITDA	2021 Est. Revenue	2021 Est. EBITDA
Independent Power Producers									
The AES Corporation	AES	\$22.60	81.3%	\$37,972	\$36,070	\$11,736	\$3,313	\$11,502	\$3,593
Vistra Corp.	VST	\$21.00	76.7%	\$23,389	\$37,468	\$11,018	\$1,158	\$16,720	\$3,160
Central Pattana Public Company Limited	CPN	\$1.73	92.6%	\$11,036	\$7,539	\$864	\$401	\$35,972	\$21,148
Ormat Technologies, Inc.	ORA	\$86.20	87.5%	\$6,608	\$4,542	\$703	\$365	\$716	\$436
Gas Utilities									
Atmos Energy Corporation	ATO	\$101.85	82.8%	\$21,188	\$21,655	\$4,047	\$1,433	\$4,262	\$1,573
UGI Corporation	UGI	\$32.33	68.7%	\$12,982	\$17,111	\$9,610	\$2,740	\$8,643	\$1,785
Southwest Gas Holdings, Inc.	SWX	\$69.75	72.9%	\$10,607	\$12,923	\$4,387	\$802	\$4,599	\$1,042
National Fuel Gas Company	NFG	\$61.55	81.0%	\$8,383	\$8,112	\$2,107	\$1,106	\$2,302	\$1,320
ONE Gas, Inc.	OGS	\$70.39	76.3%	\$7,985	\$8,411	\$2,268	\$543	\$2,086	\$556
South Jersey Industries, Inc.	SJI	\$33.42	94.6%	\$7,630	\$7,661	\$2,342	\$546	\$1,990	\$515
Spire Inc.	SR	\$62.33	78.7%	\$7,492	\$9,784	\$2,175	\$624	\$2,234	\$623
New Jersey Resources Corporation	NJR	\$38.70	81.5%	\$6,835	\$6,162	\$2,673	\$455	\$2,661	\$534
Northwest Natural Holding Company	NWN	\$43.38	75.3%	\$2,909	\$4,101	\$941	\$284	\$912	\$291
Chesapeake Utilities Corporation	CPK	\$115.39	78.9%	\$2,826	\$2,117	\$630	\$214	\$644	\$210
Suburban Propane Partners, L.P.	SPH	\$15.05	84.8%	\$2,186	\$2,115	\$1,472	\$312	\$0	\$298
FirstGroup plc	FGP	\$1.17	72.2%	\$1,634	\$5,056	\$6,055	\$202	\$4,739	\$825
Sitio Royalties Corp.	STR	\$22.11	72.8%	\$812	\$2,302	\$238	\$197	\$396	\$353

Source: Capital IQ

2

Valuation Metrics

Return Profile, Trading Multiples

Company Name	Ticker	Return Profile						Trading Multiples	
		Return on Assets	Return on Equity	Revenue Growth	EBITDA Margin	EBITDA Growth	5-yr Beta	TEV / LTM Revenue	TEV / LTM EBITDA
Electric Utilities									
NextEra Energy, Inc.	NEE	0.9%	3.7%	3.9%	37.7%	-14.3%	0.5x	12.0x	31.8x
Duke Energy Corporation	DUK	2.2%	7.2%	10.8%	44.4%	5.4%	0.4x	5.3x	11.9x
The Southern Company	SO	2.4%	8.7%	18.4%	34.4%	-3.5%	0.5x	4.9x	14.3x
PG&E Corporation	PCG	1.9%	1.0%	10.6%	31.5%	6.1%	1.1x	3.8x	12.1x
American Electric Power Company, Inc.	AEP	2.8%	11.2%	13.5%	38.5%	18.2%	0.4x	4.5x	11.7x
Exelon Corporation	EXC	2.6%	6.6%	45.4%	19.5%	-29.8%	0.6x	2.0x	10.2x
Xcel Energy Inc.	XEL	2.4%	10.6%	9.9%	33.0%	6.1%	0.4x	4.1x	12.3x
Edison International	EIX	2.9%	2.9%	18.0%	33.3%	13.4%	0.7x	3.4x	10.1x
ITC Limited	ITC	0.0%	0.0%	25.0%	33.5%	19.7%	0.4x	5.8x	17.2x
Entergy Corporation	ETR	1.8%	10.6%	12.9%	29.1%	-1.6%	0.6x	3.8x	13.1x
FirstEnergy Corp.	FE	3.1%	14.1%	6.3%	32.7%	1.9%	0.5x	3.7x	11.2x
PPL Corporation	PPL	2.5%	5.2%	16.5%	39.9%	-3.4%	0.8x	4.9x	12.2x
Evergy, Inc.	EVRG	2.8%	9.1%	-0.9%	41.8%	0.5%	0.5x	4.6x	11.0x
Pinnacle West Capital Corporation	PNW	2.5%	9.5%	7.0%	41.4%	2.9%	0.4x	4.0x	9.6x
OGE Energy Corp.	OGE	3.0%	23.4%	-16.4%	35.4%	11.8%	0.7x	4.1x	11.7x
PNM Resources, Inc.	PNM	2.5%	7.8%	19.1%	34.8%	13.2%	0.4x	4.2x	12.2x
Portland General Electric Company	POR	2.7%	8.9%	9.7%	32.5%	14.7%	0.6x	3.0x	9.1x
IDACORP, Inc.	IDA	2.6%	9.1%	4.8%	32.0%	-4.5%	0.6x	4.5x	14.1x
Hawaiian Electric Industries, Inc.	HE	1.5%	10.3%	22.6%	20.6%	-1.3%	0.4x	2.0x	9.8x
ALLETE, Inc.	ALE	1.5%	4.5%	16.4%	26.2%	3.6%	0.7x	3.6x	13.7x
Otter Tail Corporation	OTTR	8.2%	25.8%	41.0%	32.2%	70.6%	0.5x	2.4x	7.5x
Unitil Corporation	UTL	3.3%	9.5%	20.4%	26.7%	6.2%	0.4x	2.5x	9.3x
	Mean	2.5%	9.1%	14.3%	33.2%	6.2%	0.6x	4.2x	12.5x
	Median	2.5%	9.0%	13.2%	33.2%	4.5%	0.5x	4.0x	11.8x

Source: Capital IQ

Valuation Metrics (cont.)

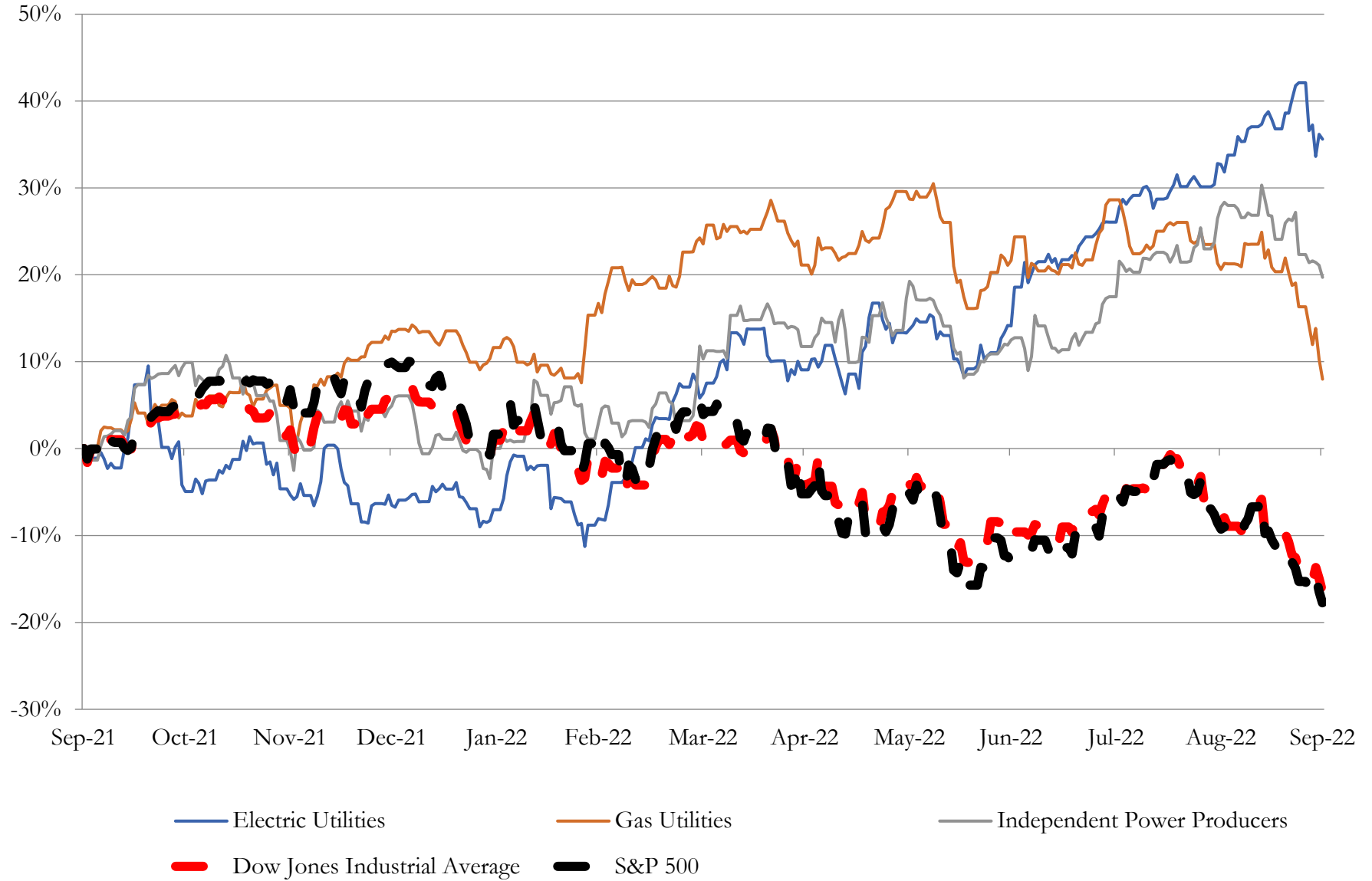
Return Profile, Trading Metrics

Company Name	Ticker	Return Profile						Trading Multiples	
		Return on Assets	Return on Equity	Revenue Growth	EBITDA Margin	EBITDA Growth	5-yr Beta	TEV / LTM Revenue	TEV / LTM EBITDA
Independent Power Producers									
The AES Corporation	AES	4.0%	-15.7%	12.4%	28.2%	-15.9%	0.9x	3.2x	11.5x
Vistra Corp.	VST	-1.8%	-15.7%	-7.0%	10.5%	132.5%	0.9x	2.1x	20.2x
Central Pattana Public Company Limited	CPN	2.5%	8.9%	6.3%	46.4%	-18.3%	0.8x	12.8x	27.5x
Ormat Technologies, Inc.	ORA	2.5%	4.1%	7.8%	51.9%	9.3%	0.5x	9.4x	18.1x
	Mean	1.8%	-4.6%	4.9%	34.3%	26.9%	0.8x	6.9x	19.3x
	Median	2.5%	-5.8%	7.1%	37.3%	-3.3%	0.9x	6.3x	19.2x
Gas Utilities									
Atmos Energy Corporation	ATO	2.8%	8.8%	22.1%	35.4%	4.7%	0.5x	5.2x	14.8x
UGI Corporation	UGI	8.7%	24.4%	34.7%	28.5%	24.8%	1.1x	1.4x	4.7x
Southwest Gas Holdings, Inc.	SWX	2.1%	4.6%	28.5%	18.3%	5.2%	0.2x	2.4x	13.2x
National Fuel Gas Company	NFG	6.1%	24.6%	25.8%	52.5%	20.3%	0.7x	4.0x	7.6x
ONE Gas, Inc.	OGS	2.5%	8.9%	35.8%	23.9%	7.4%	0.6x	3.5x	14.7x
South Jersey Industries, Inc.	SJI	2.9%	8.3%	35.1%	23.3%	16.5%	0.6x	3.3x	14.0x
Spire Inc.	SR	2.6%	7.9%	-1.0%	28.7%	1.1%	0.4x	3.4x	12.0x
New Jersey Resources Corporation	NJR	3.6%	12.7%	32.1%	17.0%	3.1%	0.6x	2.6x	15.0x
Northwest Natural Holding Company	NWN	2.4%	7.6%	15.0%	30.2%	-3.9%	0.5x	3.1x	10.3x
Chesapeake Utilities Corporation	CPK	4.2%	11.5%	16.5%	34.0%	6.5%	0.6x	4.5x	13.2x
Suburban Propane Partners, L.P.	SPH	7.4%	34.8%	18.1%	21.2%	2.8%	0.6x	1.5x	7.0x
FirstGroup plc	FGP	-0.1%	-0.6%	6.3%	3.3%	-52.8%	1.8x	0.3x	8.1x
Sitio Royalties Corp.	STR	5.3%	29.4%	296.3%	82.6%	381.0%	0.0x	3.4x	4.1x
	Mean	3.9%	14.1%	43.5%	30.7%	32.1%	0.6x	3.0x	10.7x
	Median	2.9%	8.9%	25.8%	28.5%	5.2%	0.6x	3.3x	12.0x
Source: Capital IQ									

3

LTM Equity Performance

Major Indexes



Source: Capital IQ

4

Recent M&A Activity

Last Twelve (12) Months as of September 30, 2022

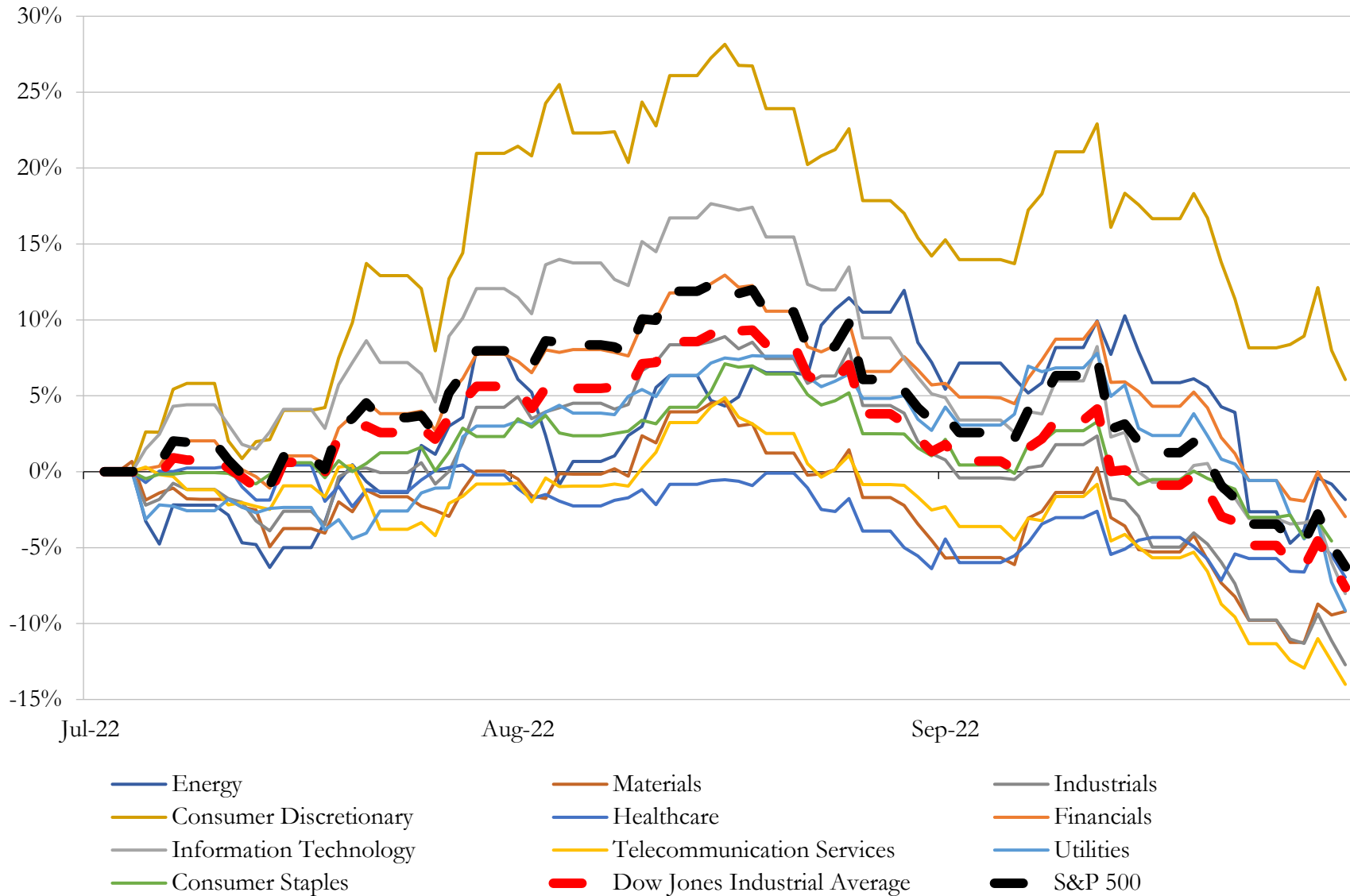
(USD in millions)

Close Date	Target	Acquirer	Implied TEV
May-22	The Narragansett Electric Company	PPL Energy Holdings, LLC	\$5,116
Jan-22	Arkansas and Oklahoma gas distribution assets of CenterPoint Energy, Inc.	Summit Utilities, Inc.	\$2,150
May-22	Clearway Community Energy Development LLC	KKR & Co. Inc.	\$1,900
Dec-21	Savion, LLC	Shell New Energies US LLC	\$1,400
Feb-22	Fossil Fuel Electric Generating Assets located in New Jersey and Maryland of	ArcLight Capital Partners, LLC; Arclight Energy Partners Fund VII, L.P.	\$1,370
Sep-22	Midland Cogeneration Venture Limited Partnership	Manulife Investment Management; Capital Power Corporation; Manulife	\$894
Dec-21	2,520-Megawatt Renewables Portfolio	NextEra Energy Partners, LP	\$858
Jul-22	Vanguard Renewables LLC	BlackRock Real Assets	\$700
Sep-22	Hope Gas, Inc.	Hearthstone Utilities Inc.	\$690
Dec-21	530 MW Utah Solar Portfolio	Clearway Energy, Inc.	\$670
Dec-21	4.8GW of Fossil Generation Assets of NRG Energy, Inc.	Generation Bridge, LLC	\$620
Jan-22	New York American Water Company, Inc.	Liberty Utilities Co.	\$608
Sep-22	Solar Service Experts, LLC	XL Fleet Corp.	\$600
Feb-22	Fossil Fuel Electric Generating Assets located in New York and Connecticut of	Generation Bridge II, LLC	\$550
Sep-22	Standard Solar, Inc.	Brookfield Asset Management Inc.; Brookfield Global Transition Fund I	\$540
Nov-21	Valcour Wind Energy, LLC	AES Clean Energy Development, LLC	\$352
Sep-22	Tri Global Energy, LLC	Enbridge Inc.	\$320
Oct-21	Curtis Palmer, a 60 MW run-of-river hydroelectric portfolio	Innergex Renewable Energy Inc.; Hydro-Québec International, Inc.	\$312
Dec-21	100-MW Operating Wind Asset Located in California	NextEra Energy Partners, LP	\$283
Mar-22	Commercial & Industrial Solar Business of SunPower Corporation, Systems	TotalEnergies Renewables USA, LLC	\$250
May-22	Wastewater system assets of York City Sewer Authority, Pennsylvania	Pennsylvania-American Water Company, Inc.	\$235
Dec-21	Community Energy Solar, LLC	AES Clean Energy Development, LLC	\$232
Jan-22	Substantially all Assets of Rockdale Marcellus	Repsol Oil & Gas USA, LLC	\$222
Jul-22	Nextgen Power Holdings LLC	Archaea Infrastructure, LLC	\$215
Dec-21	RockGen Energy LLC	Dairyland Power Cooperative	\$210
Jan-22	Renal Business of Cantel Medical LLC	Evoqua Water Technologies LLC; Evoqua Water Technologies Ltd	\$196

Source: Capital IQ

5 Change in Market Capitalization by Sector

Last Three (3) Months as of September 30, 2022

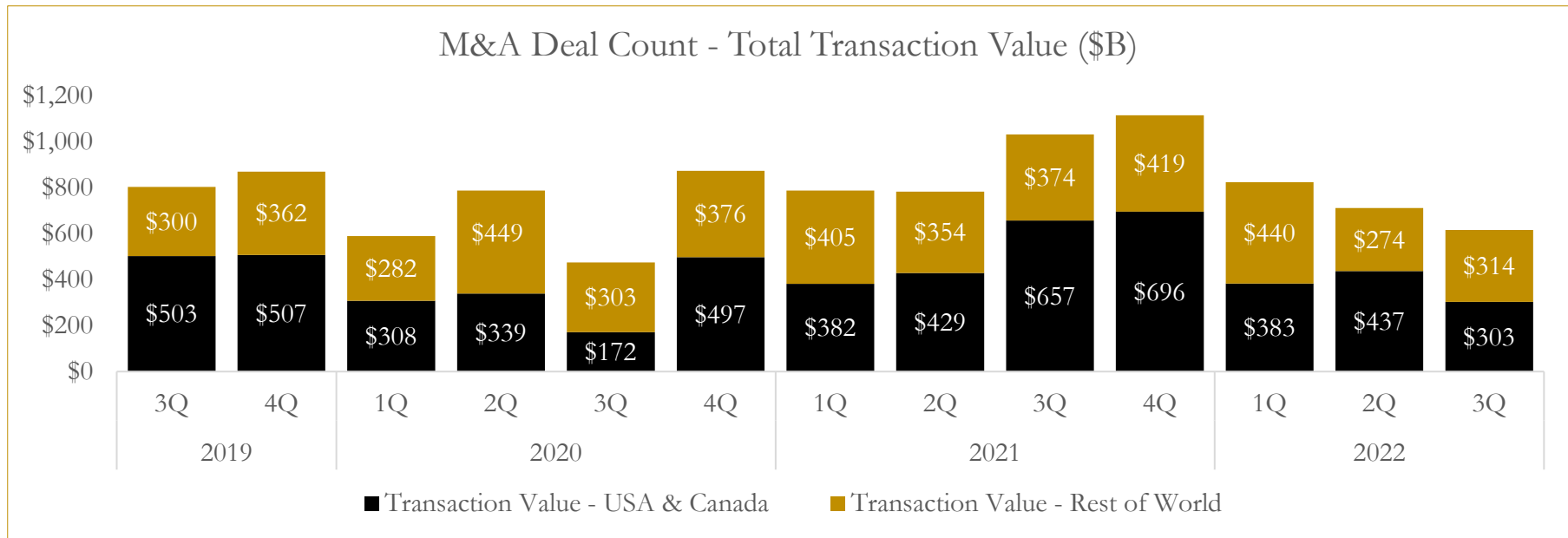
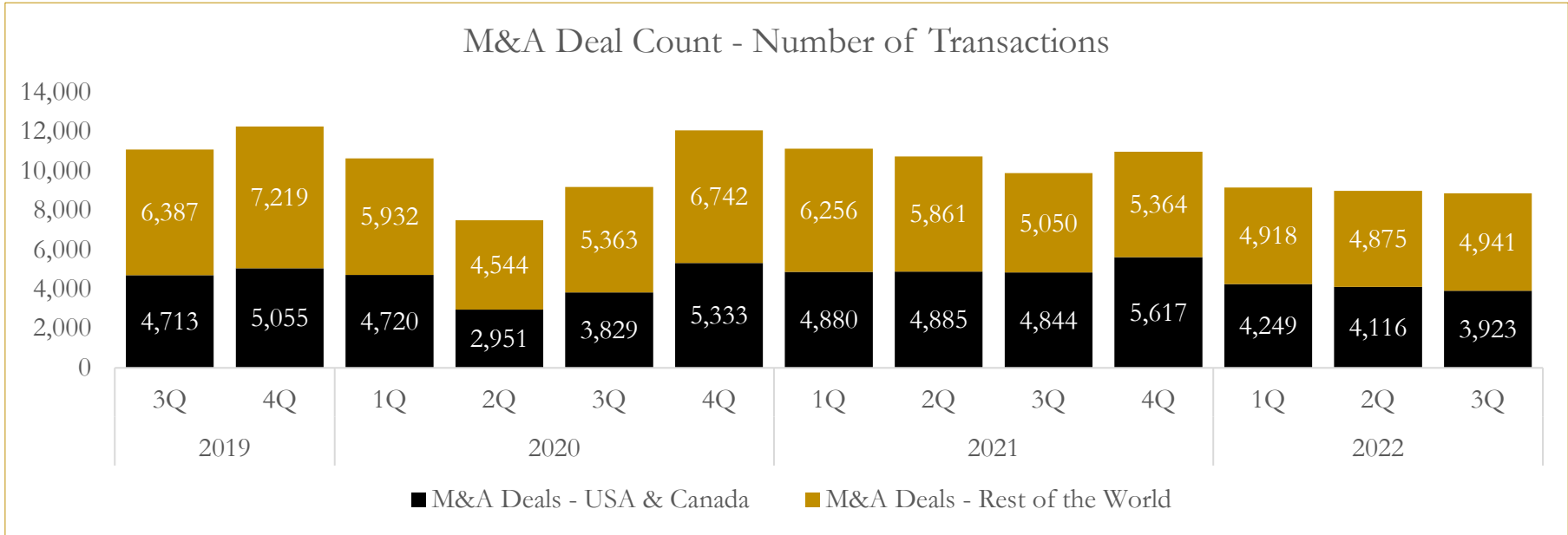


Source: Capital IQ

6

M&A Deal Flow Statistics

Last Three (3) Years as of September 30, 2022



Source: Capital IQ

About Houlihan Capital

Houlihan Capital is a leading, solutions-driven valuation, financial advisory and boutique investment banking firm. We pride ourselves on being thought leaders in an ever-changing landscape.

Houlihan Capital is SOC-compliant, a FINRA and SIPC member and committed to the highest levels of professional ethics and standards.

Valuation & Financial Advisory

We provide an array of services that include enterprise valuations, portfolio valuation, valuation of carried interest, transaction opinions, tax and financial reporting compliance, purchase price allocations, and a wide variety of consulting services through our Financial Advisory Group.

Investment Banking

Through our Investment Banking Group, we offer sell-side/buy-side advisory and capital raises. Through our Special Situations desk, we provide services that fit outside the archetypal verticals, including liquidity solutions, transactional advisory, and secondary market advisory and trading.

Litigation Support

Our team provides support for a wide variety of situations including commercial and shareholder disputes, derivatives and structured finance litigation, and fraudulent conveyance.

Contact:

Andrew Smith

President

asmith@houlihancapital.com

(312) 450-8610

Paul Clark

Managing Director

pclark@houlihancapital.com

(312) 450-8656

Michael Norton

Director, Business Development

mnorton@houlihancapital.com

(312) 450-8628

Monica Blocker

Director, Business Development

mblocker@houlihancapital.com

(312) 450-8699