

Industry Update

Hotels, Restaurants, Leisure

Q1 2023

1

Financial Performance

Size Profile, LTM Financials, Forward Estimates

(USD in millions, except per share data)

Company Name	Ticker	Size Profile			LTM Operating Data			Forward Estimates	
		Price at 03/31/23	% of 52 Week High	TEV	Total Assets	LTM Revenue	LTM EBITDA	2023 Est. Revenue	2023 Est. EBITDA
Casinos and Gambling									
Las Vegas Sands Corp.	LVS	\$57.45	94.2%	\$56,895	\$22,715	\$5,287	\$951	\$9,698	\$3,672
MGM Resorts International	MGM	\$44.42	96.1%	\$43,892	\$43,542	\$14,102	\$1,884	\$15,401	\$4,560
Wynn Resorts, Limited	WYNN	\$111.91	96.1%	\$21,948	\$0	\$4,227	\$753	\$6,114	\$1,891
Churchill Downs Incorporated	CHDN	\$257.05	97.3%	\$15,208	\$6,274	\$2,005	\$580	\$2,545	\$1,087
Boyd Gaming Corporation	BYD	\$64.12	94.2%	\$10,708	\$6,325	\$3,659	\$1,309	\$3,684	\$1,275
Red Rock Resorts, Inc.	RRR	\$44.57	88.2%	\$5,608	\$0	\$1,696	\$737	\$1,713	\$744
Hotels, Resorts, Cruise Lines									
Marriott International, Inc.	MAR	\$166.04	84.8%	\$65,424	\$24,863	\$6,772	\$4,137	\$23,417	\$4,514
Hilton Worldwide Holdings Inc.	HLT	\$140.87	83.9%	\$47,239	\$15,211	\$4,002	\$2,395	\$9,879	\$2,936
Carnival Corporation & plc	CCL	\$10.15	47.2%	\$44,248	\$51,985	\$14,979	-\$329	\$21,009	\$4,091
Royal Caribbean Cruises Ltd.	RCL	\$65.30	74.5%	\$40,676	\$32,870	\$10,666	\$1,774	\$13,137	\$3,846
Norwegian Cruise Line Holdings Ltd.	NCLH	\$13.45	57.4%	\$19,059	\$18,351	\$6,144	-\$27	\$8,616	\$1,867
Hyatt Hotels Corporation	H	\$111.79	89.4%	\$14,963	\$12,618	\$3,672	\$876	\$6,695	\$1,104
Marriott Vacations Worldwide Corporation	VAC	\$134.86	81.3%	\$9,610	\$9,602	\$3,357	\$945	\$4,992	\$974
Choice Hotels International, Inc.	CHH	\$117.19	77.9%	\$7,879	\$2,106	\$1,477	\$523	\$1,545	\$530
HOCHTIEF Aktiengesellschaft	HOT	\$83.51	98.2%	\$7,816	\$19,047	\$29,073	\$474	\$26,755	\$1,228
Wynnstay Group Plc	WYN	\$5.44	66.9%	\$108	\$295	\$820	\$28	\$675	\$17

Source: Capital IQ

Financial Performance (cont.)

Size Profile, LTM Financials, Forward Estimates

(USD in millions, except per share data)

Company Name	Ticker	Size Profile			LTM Operating Data			Forward Estimates	
		Price at 03/31/23	% of 52 Week High	TEV	Total Assets	LTM Revenue	LTM EBITDA	2023 Est. Revenue	2023 Est. EBITDA
Leisure Facilities									
Vail Resorts, Inc.	MTN	\$233.68	86.7%	\$11,875	\$6,565	\$2,825	\$835	\$3,029	\$915
SeaWorld Entertainment, Inc.	SEAS	\$61.31	80.1%	\$5,965	\$0	\$1,754	\$678	\$1,817	\$763
Six Flags Entertainment Corporation	SIX	\$26.71	60.7%	\$5,437	\$2,666	\$1,358	\$502	\$1,502	\$541
Cedar Fair, L.P.	FUN	\$45.69	80.2%	\$4,414	\$0	\$1,803	\$520	\$1,878	\$555
RCI Hospitality Holdings, Inc.	RICK	\$78.17	80.2%	\$917	\$556	\$276	\$86	\$313	\$99
Restaurants and Dining									
McDonald's Corporation	MCD	\$279.61	99.3%	\$262,881	\$52,014	\$23,415	\$12,514	\$24,983	\$13,306
Starbucks Corporation	SBUX	\$104.13	94.0%	\$143,427	\$28,256	\$32,914	\$6,001	\$37,280	\$7,437
Yum! Brands, Inc.	YUM	\$132.08	98.7%	\$49,944	\$5,749	\$6,940	\$2,336	\$7,323	\$2,539
Chipotle Mexican Grill, Inc.	CMG	\$1,708.29	97.4%	\$58,790	\$7,053	\$8,983	\$1,655	\$9,869	\$1,929
Darden Restaurants, Inc.	DRI	\$155.16	99.5%	\$23,867	\$10,075	\$10,322	\$1,521	\$10,758	\$1,654
Domino's Pizza, Inc.	DPZ	\$329.87	77.4%	\$15,994	\$1,641	\$4,550	\$836	\$4,607	\$882
The Wendy's Company	WEN	\$21.78	91.6%	\$8,407	\$5,499	\$2,096	\$469	\$2,210	\$536
Papa John's International, Inc.	PZZA	\$74.93	69.0%	\$3,527	\$865	\$2,086	\$217	\$2,178	\$222
Dine Brands Global, Inc.	DIN	\$67.64	82.1%	\$2,503	\$1,758	\$893	\$215	\$846	\$248
Shake Shack Inc.	SHAK	\$55.49	78.4%	\$3,068	\$1,507	\$950	\$60	\$1,091	\$119
Noodles & Company	NDLS	\$4.85	71.5%	\$490	\$344	\$509	\$29	\$548	\$48
Potbelly Corporation	PBPB	\$8.33	93.7%	\$416	\$251	\$472	\$20	\$484	\$27

Source: Capital IQ

2

Valuation Metrics

Return Profile, Trading Multiples

Company Name	Ticker	Return Profile					Trading Multiples		
		Return on Assets	Return on Equity	Revenue Growth	EBITDA Margin	EBITDA Growth	5-yr Beta	TEV / LTM Revenue	TEV / LTM EBITDA
Casinos and Gambling									
MGM Resorts International	MGM	-2.5%	2.5%	38.4%	13.5%	3.1%	2.1x	3.5x	25.7x
Wynn Resorts, Limited	WYNN	-0.8%	N/A	-0.2%	13.4%	50.1%	2.0x	5.9x	44.1x
Churchill Downs Incorporated	CHDN	6.2%	108.2%	22.5%	28.9%	41.5%	1.1x	7.6x	26.2x
Boyd Gaming Corporation	BYD	0.0%	0.0%	5.2%	36.1%	7.2%	1.8x	2.9x	8.1x
Red Rock Resorts, Inc.	RRR	11.4%	948.9%	2.8%	43.4%	0.5%	2.2x	3.4x	7.9x
	Mean	2.4%	211.9%	11.5%	22.6%	17.1%	1.5x	4.7x	22.4x
	Median	0.0%	2.5%	4.0%	21.2%	5.1%	1.9x	3.5x	25.7x
Hotels, Resorts, Cruise Lines									
Marriott International, Inc.	MAR	8.6%	237.9%	56.8%	70.1%	84.6%	1.6x	11.8x	16.8x
Hilton Worldwide Holdings Inc.	HLT	9.1%	N/A	44.9%	59.8%	53.2%	1.2x	11.7x	19.5x
Carnival Corporation & plc	CCL	-3.1%	-59.4%	327.4%	-2.2%	N/A	2.2x	2.9x	-130.1x
Royal Caribbean Cruises Ltd.	RCL	-1.4%	-54.2%	477.0%	7.1%	N/A	2.4x	4.4x	61.5x
Norwegian Cruise Line Holdings Ltd.	NCLH	-5.2%	-181.5%	647.5%	-15.3%	N/A	2.5x	3.9x	-25.5x
Hyatt Hotels Corporation	H	2.1%	12.5%	126.4%	25.8%	1328.8%	1.4x	4.4x	17.1x
Marriott Vacations Worldwide Corporation	VAC	5.2%	14.3%	19.1%	28.2%	52.5%	2.0x	2.9x	10.3x
Choice Hotels International, Inc.	CHH	15.5%	158.0%	31.1%	38.4%	15.4%	1.3x	5.6x	14.5x
HOCHTIEF Aktiengesellschaft	HOT	0.8%	44.5%	22.6%	1.6%	-25.7%	1.4x	0.2x	14.7x
Wynnstay Group Plc	WYN	6.1%	14.5%	42.5%	3.4%	89.6%	0.7x	0.1x	3.8x
	Mean	3.8%	20.7%	179.5%	21.7%	228.4%	1.7x	4.8x	0.3x
	Median	3.6%	14.3%	50.9%	16.5%	53.2%	1.5x	4.1x	14.6x

Source: Capital IQ

Valuation Metrics (cont.)

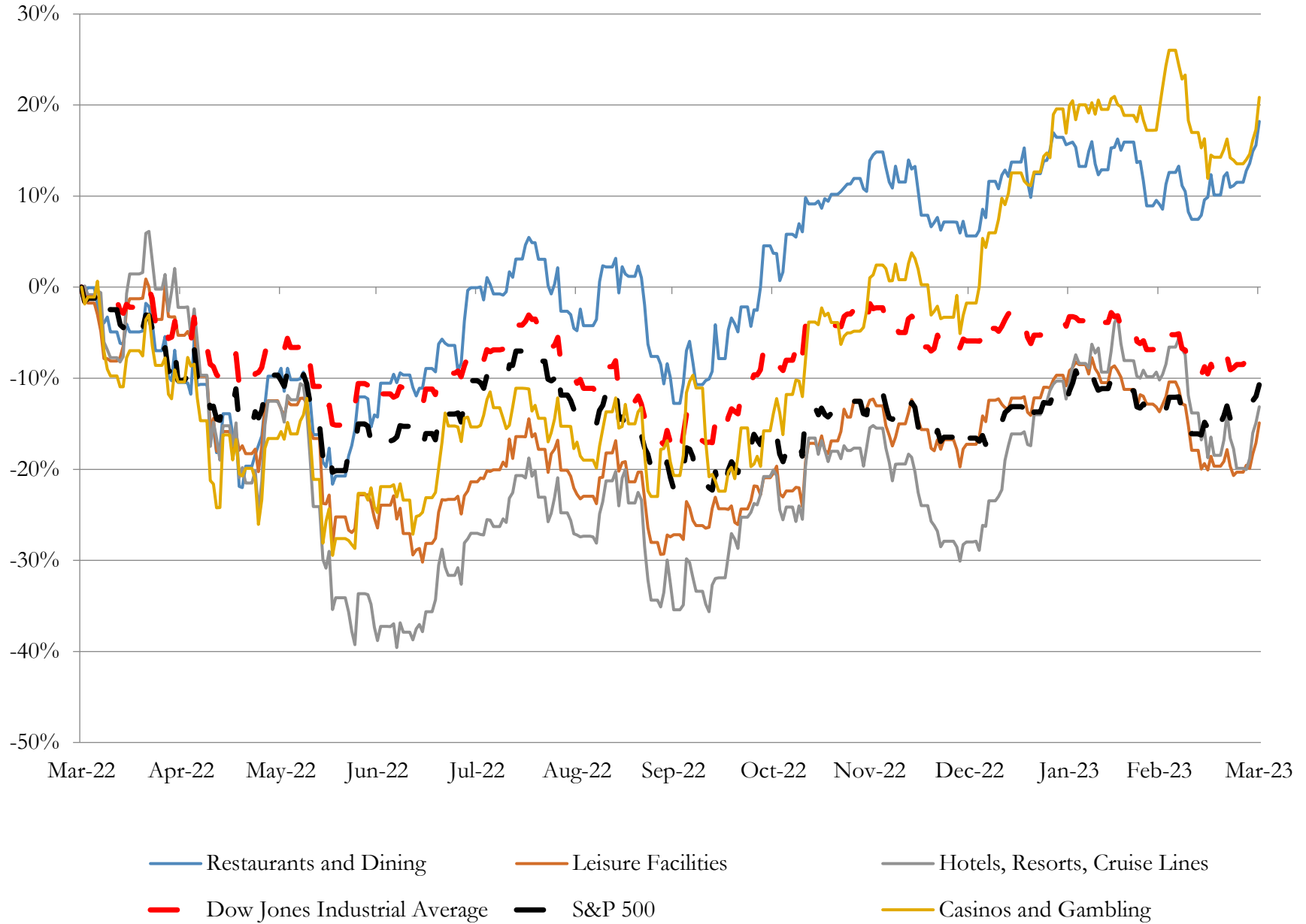
Return Profile, Trading Metrics

Company Name	Ticker	Return Profile					Trading Multiples		
		Return on Assets	Return on Equity	Revenue Growth	EBITDA Margin	EBITDA Growth	5-yr Beta	TEV / LTM Revenue	TEV / LTM EBITDA
Leisure Facilities									
Vail Resorts, Inc.	MTN	5.6%	19.8%	29.9%	29.6%	25.6%	1.2x	4.2x	14.1x
SeaWorld Entertainment, Inc.	SEAS	13.3%	N/A	15.1%	39.1%	12.1%	2.0x	3.2x	8.3x
Six Flags Entertainment Corporation	SIX	8.5%	N/A	-9.3%	36.9%	-3.2%	2.2x	3.7x	10.0x
Cedar Fair, L.P.	FUN	10.3%	N/A	35.8%	29.1%	71.6%	1.5x	2.5x	8.5x
RCI Hospitality Holdings, Inc.	RICK	8.9%	19.4%	26.1%	31.3%	24.2%	1.7x	3.3x	10.5x
	Mean	9.3%	19.6%	19.5%	33.2%	26.1%	1.7x	3.4x	10.3x
Source: Capital IQ	Median	8.9%	19.6%	26.1%	31.3%	24.2%	1.7x	3.3x	10.0x
Restaurants and Dining									
McDonald's Corporation	MCD	0.0%	0.0%	-1.5%	53.3%	3.8%	0.6x	11.2x	21.0x
Starbucks Corporation	SBUX	9.9%	N/A	8.4%	18.2%	-7.0%	0.9x	4.6x	25.3x
Yum! Brands, Inc.	YUM	23.1%	N/A	3.9%	34.0%	0.1%	1.0x	7.5x	22.2x
Chipotle Mexican Grill, Inc.	CMG	12.6%	44.7%	14.8%	18.4%	48.4%	1.3x	6.7x	36.1x
Darden Restaurants, Inc.	DRI	7.1%	43.9%	10.9%	14.7%	2.3%	1.2x	2.3x	15.8x
Domino's Pizza, Inc.	DPZ	29.6%	N/A	3.8%	18.4%	3.3%	0.8x	3.6x	19.5x
The Wendy's Company	WEN	4.0%	39.3%	10.5%	22.4%	2.3%	0.9x	3.9x	17.5x
Papa John's International, Inc.	PZZA	11.1%	N/A	1.6%	9.6%	-10.2%	1.1x	1.6x	16.7x
Dine Brands Global, Inc.	DIN	5.7%	N/A	1.5%	23.6%	-8.8%	1.9x	2.7x	11.6x
Shake Shack Inc.	SHAK	-1.0%	-6.1%	21.7%	5.4%	7.4%	1.7x	2.9x	53.6x
Noodles & Company	NDLS	1.0%	-8.7%	7.2%	5.6%	-15.6%	1.5x	1.0x	17.3x
Potbelly Corporation	PBPB	0.2%	507.7%	18.9%	2.8%	N/A	1.4x	1.1x	38.1x
	Mean	8.6%	88.7%	8.5%	18.9%	2.4%	1.2x	4.1x	24.6x
Source: Capital IQ	Median	6.4%	39.3%	7.8%	18.3%	2.3%	1.2x	3.2x	20.3x

3

LTM Equity Performance

Major Indexes



Source: Capital IQ

4

Recent M&A Activity

Last Twelve (12) Months as of March 31, 2023

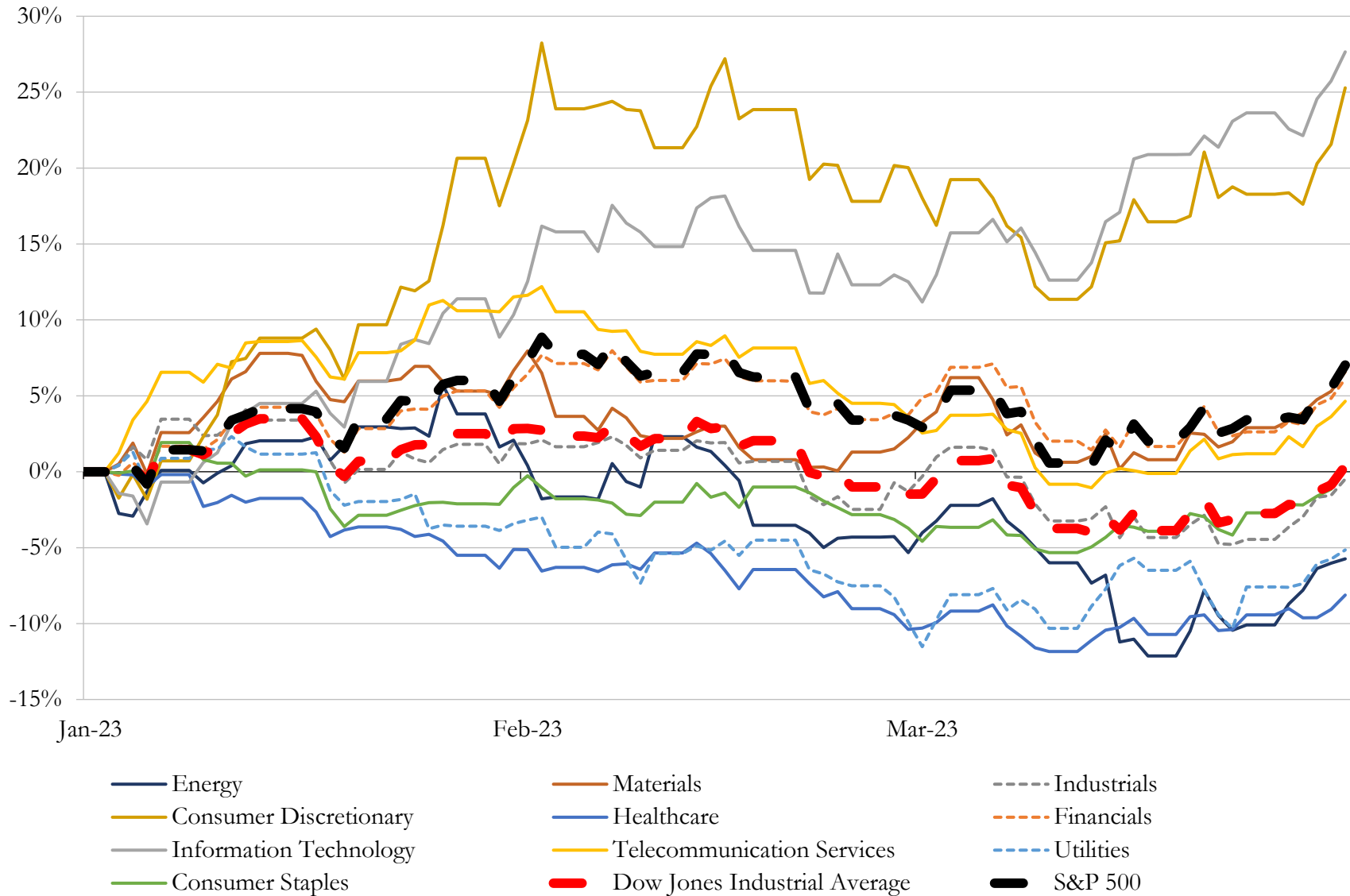
(USD in millions)

Close Date	Target	Acquirer	Implied TEV
Nov-22	Substantially All of the Assets of Peninsula Pacific Entertainment LLC	Churchill Downs Incorporated	\$2,750
May-22	Golden Nugget Online Gaming, Inc.	DraftKings Inc.	\$1,951
Dec-22	The Mirage Casino-Hotel LLC	Seminole Hard Rock International, LLC	\$1,075
Feb-23	The Diplomat Beach Resort	Credit Suisse Asset Management, LLC; Trinity Fund Advisors LLC; Trinity	\$835
Jun-22	Main Event Entertainment, Inc.	Dave & Buster's Entertainment, Inc.	\$832
Aug-22	Radisson Hospitality, Inc.	Choice Hotels International, Inc.	\$673
Nov-22	Montage Laguna Beach Resort	Fertitta Entertainment, Inc.	\$650
Oct-22	Island Global Yachting LLC	MarineMax, Inc.	\$580
Feb-23	Operations of MGM Resorts Mississippi, Inc.	Cherokee Nation Entertainment, LLC	\$450
Nov-22	Four Seasons Resort and Residences Jackson Hole	Host Hotels & Resorts, Inc.	\$315
Sep-22	BBQ Holdings, Inc.	MTY Franchising USA, Inc.	\$305
Feb-23	Dream Hotel Group, LLC	Hyatt Hotels Corporation	\$300
Dec-22	Four Seasons Resort Scottsdale at Troon North	Braemar Hotels & Resorts Inc.	\$269
Jun-22	Thompson Miami Beach Hotel	Sunstone Hotel Investors, Inc.	\$227
Aug-22	Hyatt Regency La Jolla at Aventine	IQHQ, Inc.	\$216
Dec-22	SIRATA BEACH RESORT LLC	Columbia Sussex Corporation	\$207
Jun-22	Gurney's Newport Resort & Marina	Pebblebrook Hotel Trust	\$174
Nov-22	Pala Interactive LLC.	Boyd Interactive Gaming, L.L.C.	\$170
Oct-22	Four Seasons Hotel Nashville	GD Holdings LLC; Stonebridge Development Co.; Copford Capital	\$165
Jun-22	Century Gaming, Inc.	Accel Entertainment, Inc.	\$164
Jan-23	Streamsong Resort	Lone Windmill LLC	\$160
May-22	The Inn On Fifth	Pebblebrook Hotel Trust	\$156
Sep-22	Tropicana Las Vegas Hotel and Casino, Inc.	Bally's Corporation	\$146
Sep-22	Mandarin Oriental (Washington, DC), Inc.	Henderson Park Capital Management	\$139
Mar-23	16 Marriott-branded hotels in United States	NewcrestImage, LLC; Hospitality Capital Partners, LLC	\$137
Aug-22	541-room Hotel Irvine	Hyatt Hotels Corporation	\$135
Apr-22	The Driskill Hotel Corporation	Woodbine Development Corporation; Pixiu Investments	\$125
Jun-22	Conrad Hotel in Nashville	Northwood Investors LLC	\$119
Aug-22	Loews Boston Hotel Corporation	Electra America Hospitality Group	\$117
Mar-23	The Camby in Phoenix	KHP Capital Partners	\$111

Source: Capital IQ

5 Change in Market Capitalization by Sector

Last Three (3) Months as of March 31, 2023

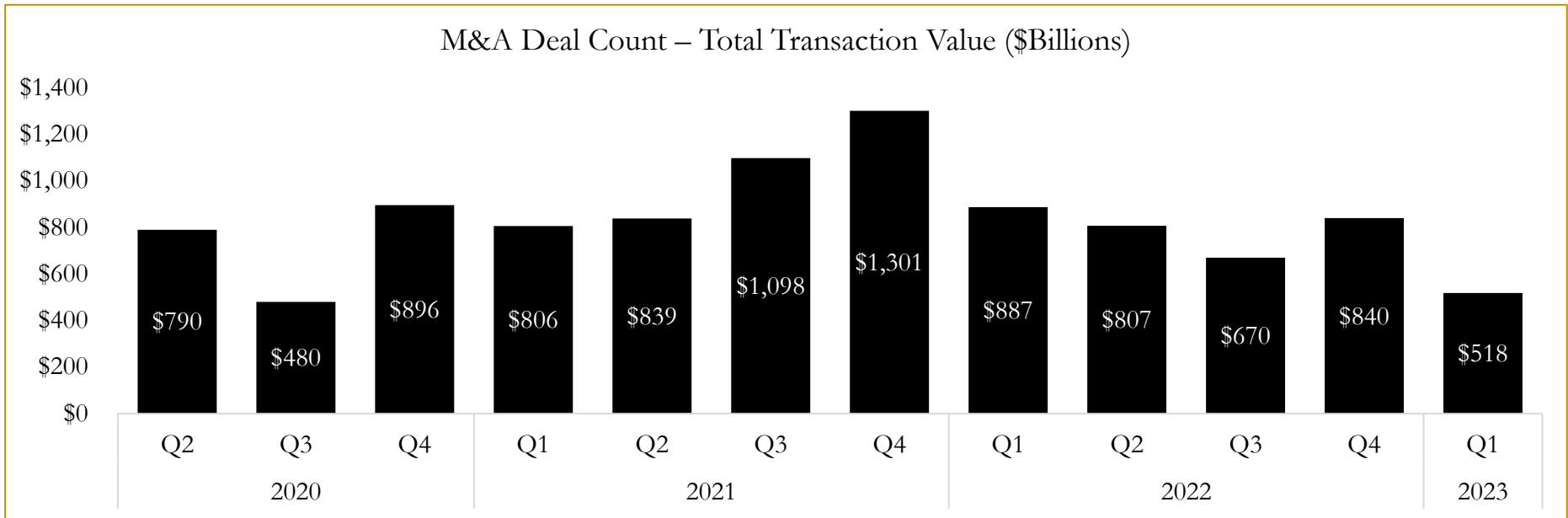
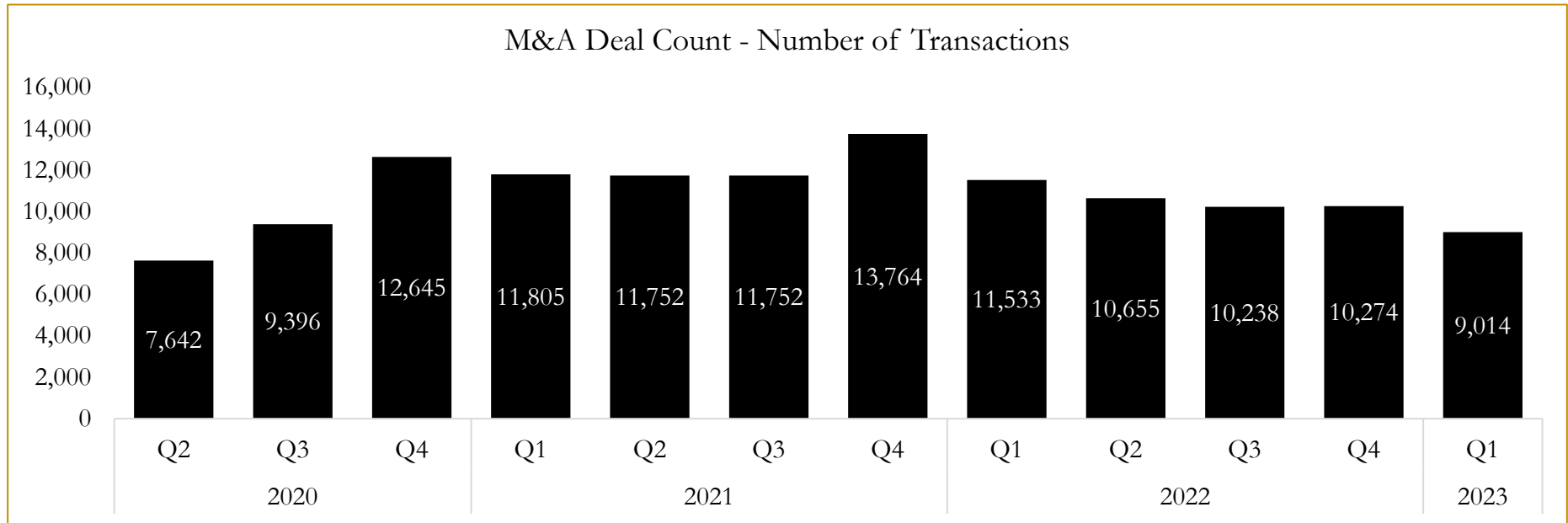


Source: Capital IQ

6

M&A Deal Flow Statistics

Last Three (3) Years as of March 31, 2023



Source: Capital IQ

About Houlihan Capital

Houlihan Capital is a leading, solutions-driven valuation, financial advisory and boutique investment banking firm. We pride ourselves on being thought leaders in an ever-changing landscape.

Houlihan Capital is SOC-compliant, a FINRA and SIPC member and committed to the highest levels of professional ethics and standards.

Valuation & Financial Advisory

We provide an array of services that include enterprise valuations, portfolio valuation, valuation of carried interest, transaction opinions, tax and financial reporting compliance, purchase price allocations, and a wide variety of consulting services through our Financial Advisory Group.

Investment Banking

Through our Investment Banking Group, we offer sell-side/buy-side advisory and capital raises. Through our Special Situations desk, we provide services that fit outside the archetypal verticals, including liquidity solutions, transactional advisory, and secondary market advisory and trading.

Litigation Support

Our team provides support for a wide variety of situations including commercial and shareholder disputes, derivatives and structured finance litigation, and fraudulent conveyance.

Contact:

Andrew Smith

President

asmith@houlihancapital.com

(312) 450-8610

Paul Clark

Managing Director

pclark@houlihancapital.com

(312) 450-8656

Michael Norton

Director, Business Development

mnorton@houlihancapital.com

(312) 450-8628

Monica Blocker

Director, Business Development

mblocker@houlihancapital.com

(312) 450-8699