



Industry Update
Steel
Q2 2023

1

Financial Performance

Size Profile, LTM Financials, Forward Estimates

(USD in millions, except per share data)

Company Name	Ticker	Size Profile			LTM Operating Data			Forward Estimates	
		Price at 06/30/23	% of 52 Week High	TEV	Total Assets	LTM Revenue	LTM EBITDA	2023 Est. Revenue	2023 Est. EBITDA
Steel Industry									
Nucor Corporation	NUE	\$163.98	89.8%	\$44,534	\$32,246	\$39,729	\$10,285	\$34,984	\$7,517
Steel Dynamics, Inc.	STLD	\$108.93	79.8%	\$18,199	\$14,551	\$20,453	\$4,298	\$19,213	\$3,815
Reliance Steel & Aluminum Co.	RS	\$271.59	99.8%	\$16,945	\$10,440	\$15,704	\$2,271	\$14,727	\$1,996
Cleveland-Cliffs Inc.	CLF	\$16.76	73.4%	\$12,109	\$18,303	\$21,976	\$1,646	\$22,118	\$2,154
United States Steel Corporation	X	\$25.01	79.3%	\$8,142	\$20,309	\$19,019	\$2,460	\$18,051	\$2,007
Commercial Metals Company	CMC	\$52.66	90.7%	\$7,285	\$6,521	\$8,997	\$1,494	\$8,559	\$1,411
ATI Inc.	ATI	\$44.23	99.6%	\$7,153	\$4,435	\$4,127	\$559	\$4,197	\$583
Worthington Industries, Inc.	WOR	\$69.47	98.3%	\$4,018	\$3,651	\$4,916	\$347	\$4,723	\$551
Carpenter Technology Corporation	CRS	\$56.13	99.6%	\$3,539	\$3,054	\$2,550	\$238	\$2,928	\$368
Sims Limited	SGM	\$15.75	92.2%	\$3,490	\$4,706	\$8,184	\$336	\$7,938	\$493
Ryerson Holding Corporation	RYI	\$43.38	99.1%	\$1,714	\$2,522	\$5,581	\$262	\$5,121	\$248
Schnitzer Steel Industries, Inc.	SCHN	\$29.99	79.6%	\$1,341	\$1,866	\$3,059	\$103	\$2,858	\$149
SunCoke Energy, Inc.	SXC	\$7.87	75.5%	\$1,223	\$1,643	\$2,053	\$283	\$1,781	\$267
TimkenSteel Corporation	TMST	\$21.57	99.6%	\$748	\$1,149	\$1,242	\$59	\$1,353	\$162
Haynes International, Inc.	HAYN	\$50.82	83.5%	\$693	\$688	\$573	\$81	\$609	\$87
Universal Stainless & Alloy Products, Inc.	USAP	\$14.01	95.6%	\$220	\$355	\$237	\$17	\$277	\$32

Source: Capital IQ

2

Valuation Metrics

Return Profile, Trading Multiples

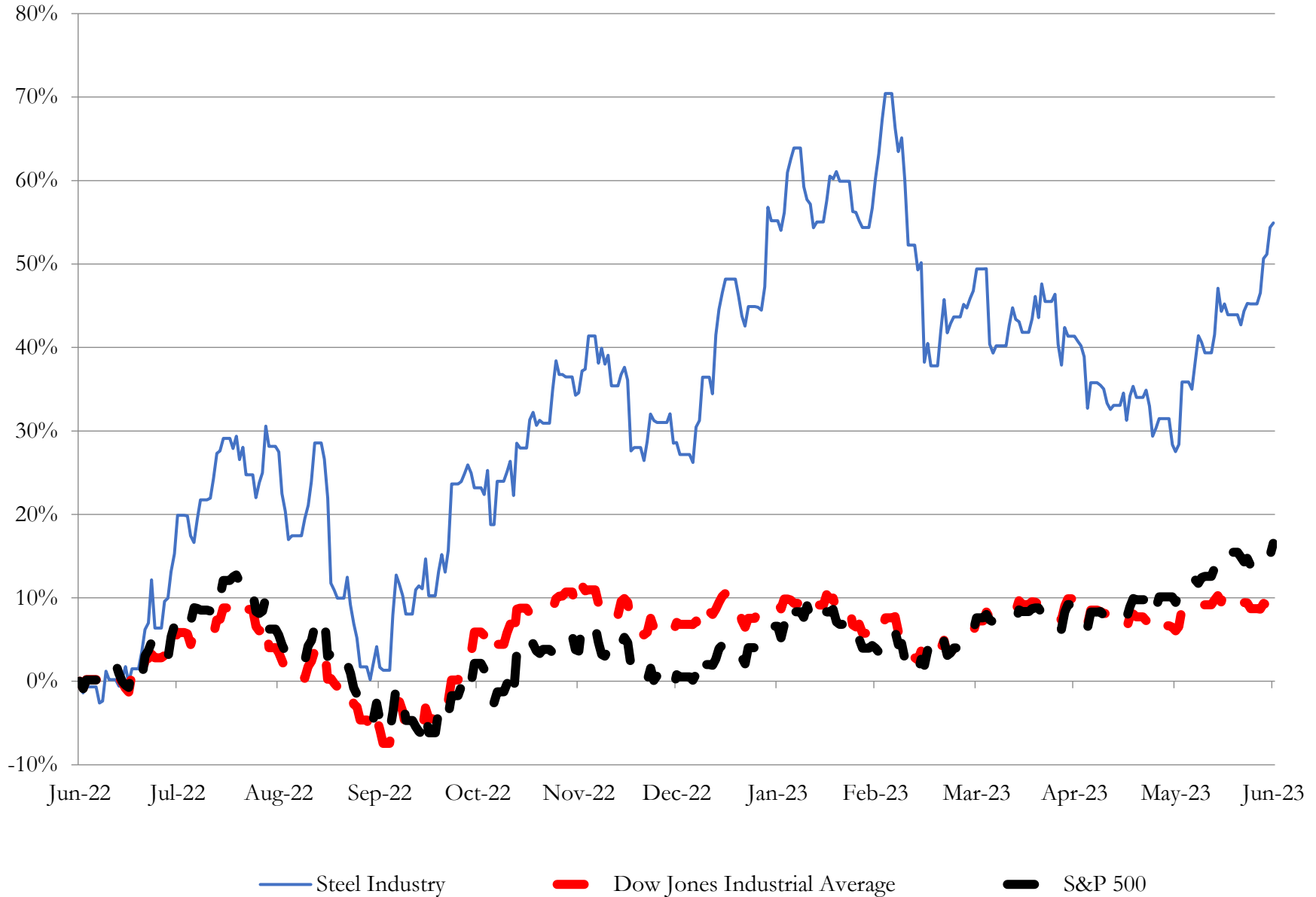
Company Name	Ticker	Return Profile					Trading Multiples		
		Return on Assets	Return on Equity	Revenue Growth	EBITDA Margin	EBITDA Growth	5-yr Beta	TEV / LTM Revenue	TEV / LTM EBITDA
Steel Industry									
Nucor Corporation	NUE	18.7%	39.3%	-0.6%	25.9%	-13.0%	1.6x	1.1x	4.3x
Steel Dynamics, Inc.	STLD	17.2%	37.2%	-7.8%	21.0%	-30.9%	1.5x	0.9x	4.2x
Reliance Steel & Aluminum Co.	RS	12.2%	20.9%	-7.6%	14.5%	-20.9%	0.9x	1.1x	7.5x
Cleveland-Cliffs Inc.	CLF	2.2%	3.6%	-7.0%	7.5%	-72.7%	2.2x	0.6x	7.4x
United States Steel Corporation	X	5.0%	12.7%	-17.7%	12.9%	-62.4%	2.2x	0.4x	3.3x
Commercial Metals Company	CMC	12.7%	26.9%	5.4%	16.6%	12.2%	1.3x	0.8x	4.9x
ATI Inc.	ATI	5.9%	27.0%	25.6%	13.5%	16.5%	1.2x	1.7x	12.8x
Worthington Industries, Inc.	WOR	4.0%	15.7%	-6.2%	7.1%	-16.1%	1.3x	0.8x	11.6x
Carpenter Technology Corporation	CRS	2.6%	4.1%	38.9%	9.3%	138.8%	1.8x	1.4x	14.9x
Sims Limited	SGM	1.5%	7.0%	-11.8%	4.1%	-34.5%	1.3x	0.4x	10.1x
Ryerson Holding Corporation	RYI	4.9%	13.6%	-15.5%	4.7%	-71.1%	1.8x	0.3x	6.5x
Schnitzer Steel Industries, Inc.	SCHN	0.5%	1.2%	-11.0%	3.4%	-66.2%	1.6x	0.4x	13.0x
SunCoke Energy, Inc.	SXC	5.2%	15.6%	22.7%	13.8%	-2.8%	1.3x	0.6x	4.3x
TimkenSteel Corporation	TMST	0.1%	-0.4%	-14.3%	4.7%	-82.8%	1.8x	0.6x	12.7x
Haynes International, Inc.	HAYN	6.0%	11.8%	29.7%	14.2%	28.3%	1.5x	1.2x	8.5x
Universal Stainless & Alloy Products, Inc.	USAP	-0.2%	-2.1%	31.7%	7.0%	-8.8%	1.1x	0.9x	13.3x
	Mean	6.2%	14.6%	3.4%	11.3%	-17.9%	1.5x	0.8x	8.7x
	Median	4.9%	13.1%	-6.6%	11.1%	-18.5%	1.5x	0.8x	8.0x

Source: Capital IQ

3

LTM Equity Performance

Major Indexes



Source: Capital IQ

4

Recent M&A Activity

Last Twelve (12) Months as of June 30, 2023

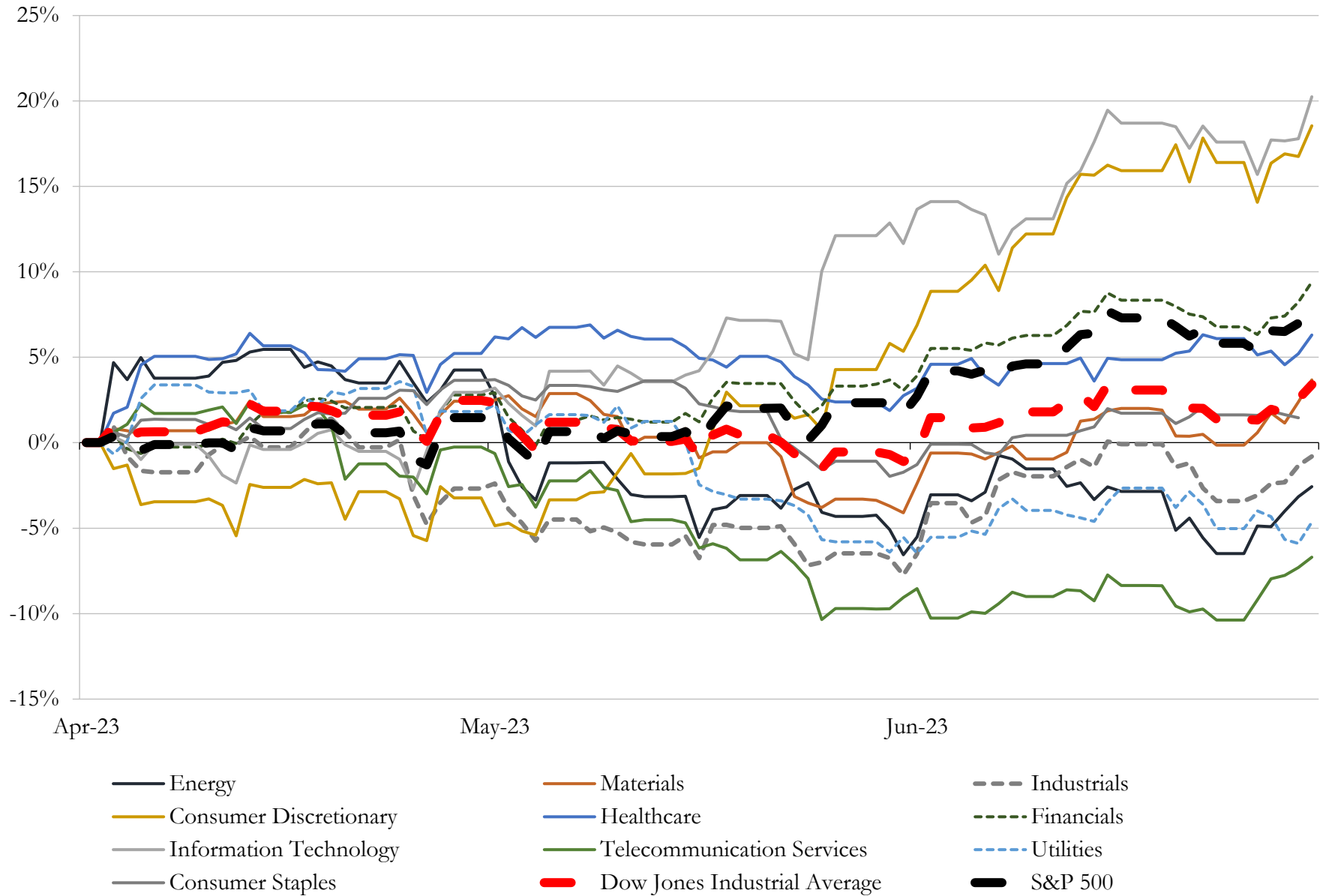
(USD in millions)

Close Date	Target	Acquirer	Implied TEV
Jun-22	voestalpine Texas LLC	ArcelorMittal S.A.	\$1,000
Feb-23	FlexSteel Pipeline Technologies, Inc.	Cactus, Inc.	\$696
Apr-23	Berg Europipe Holding Corp.	Borusan Mannesmann Pipe US Inc.	\$162
Jun-23	Pegasus Steel, LLC	Arlington Management Employees, LLC	NA
Jun-23	Gearco Incorporated	MW Components	NA
May-23	The Dotson Company, Inc.	MacLean Power, LLC	NA
Apr-23	LEFCO Industries LLC	Evergreen Cooperative Corporation; The Fund For Employee Ownership	NA
Mar-23	Federal Steel Supply, Inc.	Westbridge Capital Ltd.	NA
Jan-23	Penn Wire Products Corporation	Wire-Mesh Products, Inc.	NA
Dec-22	Assets of Calstrip Industries, Inc.	Steel Technologies LLC	NA
Dec-22	Inwesco Incorporated	CRH plc	NA
Nov-22	SteelPro, LLC	Heartland Steel Holdings, LLC	NA
Nov-22	Steel Industries, Inc.	Forged Solutions Group Limited	NA
Nov-22	Gerber Metal Supply Company	All Metals Industries, Inc	NA
Oct-22	ESP Specialty Steel Products LLC	SPS Companies, Inc	NA
Oct-22	California Expanded Metal Products Company	Jfe Shoji America Holdings Inc.	NA
Aug-22	Summit Utility Structures LLC/Sovereign Steel Manufacturing LLC	Nucor Corporation	NA
Aug-22	Northern Iron & Machine	The Lawton Standard Co.	NA
Aug-22	Great South Metals Company	Mainline Metals, Inc.	NA
Aug-22	Orchid Monroe, LLC	Union Partners I LLC	NA
Aug-22	Chicago Steel Container Corporation	Stavig Industries, LLC	NA
Jul-22	Neenah Enterprises, Inc.	Charlotte Pipe and Foundry Company	NA

Source: Capital IQ

5 Change in Market Capitalization by Sector

Last Three (3) Months as of June 30, 2023

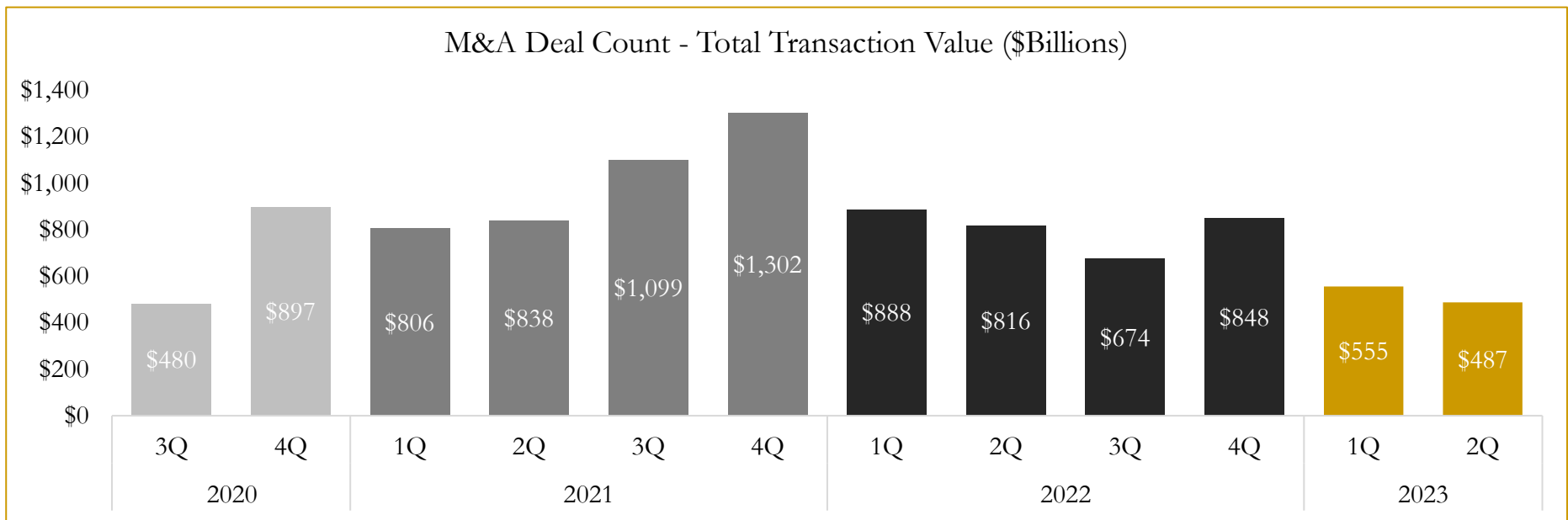
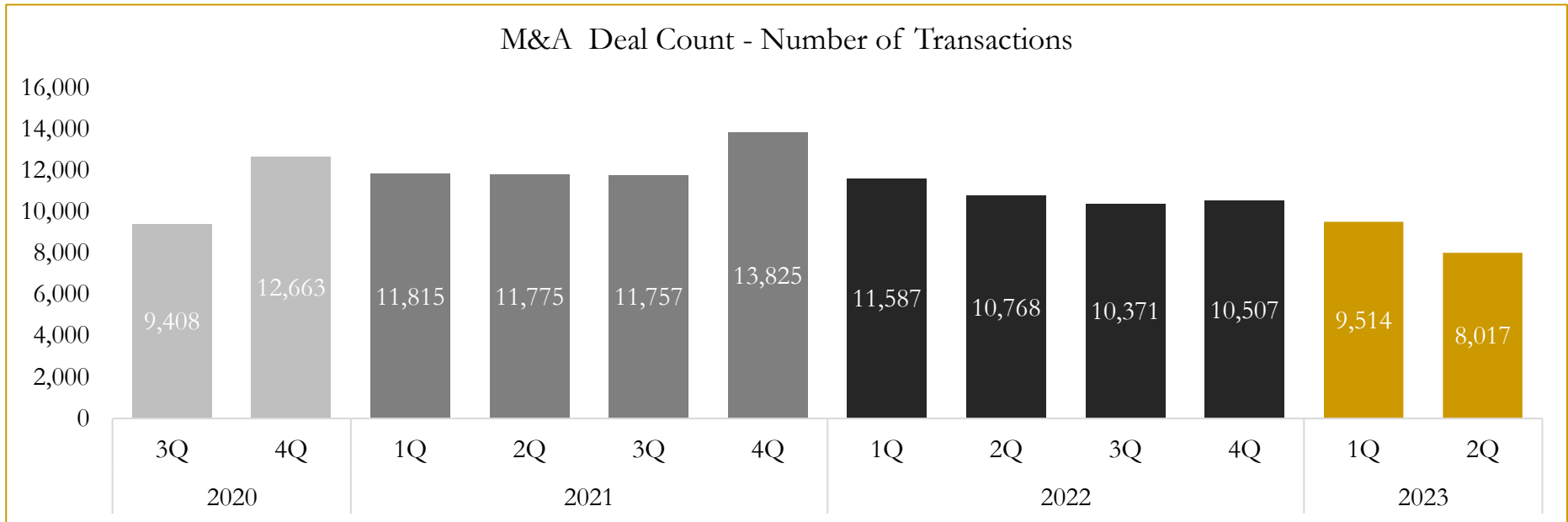


Source: Capital IQ

6

M&A Deal Flow Statistics

Last Three (3) Years as of June 30, 2023



Source: Capital IQ

Houlihan Capital is a leading, solutions-driven valuation, financial advisory and investment banking firm. We pride ourselves on being thought leaders in an ever-changing landscape.

Houlihan Capital is SOC-compliant, a FINRA and SIPC member and committed to the highest levels of professional ethics and standards.

Valuation & Financial Advisory

- **Portfolio Valuation (ASC 820)**
- **Complex & Illiquid Securities (Level 3)**
- **Cryptoasset /Blockchain Valuations**
 - Locked Token Valuations
- **Enterprise Valuations**
- **Fairness & Solvency Opinions**
 - SPAC Fairness
- **Estate & Gift Valuations**
- **Purchase Price Allocation (ASC 805)**
- **Goodwill Impairment Testing (ASC 350)**
- **Stock-based Compensation (ASC 718, IRC 409A)**

Investment Banking

- **Mergers & Acquisitions**
 - Sell-Side Advisory
 - Sale of Minority Ownership Positions
 - Leveraged Buyouts
 - Majority Recapitalizations
 - Corporate Divestitures
- **Corporate Financial Services**
 - Financial Modeling
 - Investor Presentation
 - Valuation Analysis
 - Strategic Advisory

For questions or inquiries regarding our services, please contact:

info@houlihancapital.com