



Industry Update
Healthcare
Q3 2023

1

Financial Performance

Size Profile, LTM Financials, Forward Estimates

(USD in millions, except per share data)

Company Name	Ticker	Size Profile			LTM Operating Data		Forward Estimates		
		Price at 09/30/23	% of 52 Week High	TEV	Total Assets	LTM Revenue	LTM EBITDA	2023 Est. Revenue	2023 Est. EBITDA
Healthcare Equipment and Supplies									
Medtronic plc	MDT	\$78.36	85.2%	\$118,563	\$90,776	\$31,558	\$8,333	\$32,180	\$9,308
Stryker Corporation	SYK	\$273.27	89.0%	\$112,526	\$37,409	\$19,455	\$4,794	\$20,256	\$5,263
Boston Scientific Corporation	BSX	\$52.80	95.3%	\$84,958	\$33,601	\$13,400	\$3,384	\$14,088	\$4,032
ResMed Inc.	RMD	\$147.87	60.7%	\$22,743	\$6,752	\$4,223	\$1,292	\$4,500	\$1,398
Align Technology, Inc.	ALGN	\$305.32	73.9%	\$20,542	\$6,145	\$3,737	\$714	\$3,979	\$971
Teleflex Incorporated	TFX	\$196.41	71.1%	\$10,604	\$6,896	\$2,899	\$785	\$2,959	\$859
Haemonetics Corporation	HAE	\$89.58	94.0%	\$4,916	\$1,962	\$1,219	\$284	\$1,249	\$342
ICU Medical, Inc.	ICUI	\$119.01	56.0%	\$4,317	\$4,463	\$2,294	\$286	\$2,271	\$394
Integra LifeSciences Holdings Corporation	IART	\$38.19	62.9%	\$4,348	\$3,778	\$1,545	\$375	\$1,555	\$387
Healthcare Providers and Services									
HCA Healthcare, Inc.	HCA	\$245.98	80.7%	\$109,295	\$53,594	\$61,920	\$12,308	\$63,938	\$12,608
The Cigna Group	CI	\$286.07	84.1%	\$107,687	\$150,054	\$186,021	\$9,860	\$191,864	\$11,824
Humana Inc.	HUM	\$486.52	85.2%	\$56,632	\$56,455	\$98,727	\$5,161	\$103,576	\$5,791
Centene Corporation	CNC	\$68.88	78.4%	\$41,672	\$82,853	\$138,273	\$6,315	\$148,284	\$4,881
Tenet Healthcare Corporation	THC	\$65.89	77.2%	\$23,936	\$27,157	\$20,110	\$3,693	\$20,448	\$3,391
DaVita Inc.	DVA	\$94.53	80.8%	\$21,079	\$16,959	\$11,739	\$2,010	\$11,900	\$2,328
Community Health Systems, Inc.	CYH	\$2.90	36.2%	\$13,384	\$14,648	\$12,390	\$1,244	\$12,473	\$1,508
Select Medical Holdings Corporation	SEM	\$25.27	75.4%	\$8,260	\$7,702	\$6,489	\$681	\$6,623	\$812

Source: Capital IQ

Financial Performance (cont.)

Size Profile, LTM Financials, Forward Estimates

(USD in millions, except per share data)

Company Name	Ticker	Size Profile			LTM Operating Data		Forward Estimates		
		Price at 09/30/23	% of 52 Week High	TEV	Total Assets	LTM Revenue	LTM EBITDA	2023 Est. Revenue	2023 Est. EBITDA
Pharmaceuticals									
Eli Lilly and Company	LLY	\$537.13	89.2%	\$493,460	\$54,814	\$29,516	\$9,765	\$33,368	\$11,284
AbbVie Inc.	ABBV	\$149.06	88.7%	\$313,339	\$135,367	\$56,023	\$29,196	\$53,536	\$25,782
Merck & Co., Inc.	MRK	\$102.95	86.0%	\$289,841	\$104,469	\$58,311	\$12,328	\$59,295	\$14,348
Pfizer Inc.	PFE	\$33.17	60.4%	\$209,230	\$220,168	\$77,943	\$31,071	\$66,386	\$24,129
Bristol-Myers Squibb Company	BMJ	\$58.04	71.3%	\$149,051	\$93,489	\$45,187	\$18,693	\$44,858	\$18,699
Perrigo Company plc	PRGO	\$31.95	77.1%	\$7,831	\$10,965	\$4,630	\$627	\$4,826	\$688
Amneal Pharmaceuticals, Inc.	AMRX	\$4.22	89.0%	\$3,258	\$3,701	\$2,312	\$472	\$2,385	\$535

Source: Capital IQ

2

Valuation Metrics

Return Profile, Trading Multiples

Company Name	Ticker	Return Profile						Trading Multiples	
		Return on Assets	Return on Equity	Revenue Growth	EBITDA Margin	EBITDA Growth	5-yr Beta	TEV / LTM Revenue	TEV / LTM EBITDA
Healthcare Equipment and Supplies									
Medtronic plc	MDT	4.1%	7.0%	1.6%	26.4%	-7.9%	0.7x	3.6x	13.5x
Stryker Corporation	SYK	6.4%	16.4%	10.4%	24.6%	5.4%	0.9x	5.6x	22.6x
Boston Scientific Corporation	BSX	4.2%	5.1%	8.7%	25.3%	10.7%	0.8x	6.0x	23.8x
ResMed Inc.	ALGN	12.2%	24.0%	18.0%	30.6%	14.7%	0.5x	5.1x	16.6x
Align Technology, Inc.	RMD	6.0%	8.7%	-6.3%	19.1%	-27.6%	1.5x	5.2x	27.5x
Teleflex Incorporated	TFX	5.0%	9.1%	3.2%	27.1%	0.5%	1.0x	3.5x	13.0x
Haemonetics Corporation	IART	6.3%	16.7%	18.8%	23.3%	20.3%	0.4x	4.0x	17.3x
ICU Medical, Inc.	ICUI	0.8%	-2.3%	28.8%	12.5%	31.9%	0.7x	1.8x	14.5x
Integra LifeSciences Holdings Corporation	HAE	4.2%	7.9%	-1.4%	24.3%	-6.8%	1.2x	2.8x	11.6x
	Mean	5.5%	10.3%	9.1%	23.7%	4.6%	85.5%	3.7x	16.7x
	Median	5.0%	8.7%	8.7%	24.6%	5.4%	76.9%	3.5x	16.8x
Healthcare Providers and Services									
HCA Healthcare, Inc.	HCA	11.0%	N/A	3.0%	19.9%	0.3%	1.7x	1.7x	8.6x
The Cigna Group	CI	3.3%	14.8%	3.8%	5.3%	-3.7%	0.7x	0.6x	11.2x
Humana Inc.	HUM	5.8%	20.8%	9.1%	5.2%	6.0%	0.6x	0.6x	11.2x
Centene Corporation	CNC	3.7%	10.3%	7.0%	4.6%	11.6%	0.5x	0.3x	6.8x
Tenet Healthcare Corporation	DVA	6.6%	24.8%	3.9%	18.4%	2.8%	2.2x	1.2x	6.3x
DaVita Inc.	THC	4.6%	29.0%	1.0%	17.1%	-12.5%	1.0x	1.7x	9.7x
Community Health Systems, Inc.	CYH	3.4%	N/A	0.0%	10.0%	-14.9%	1.8x	1.1x	10.7x
Select Medical Holdings Corporation	SEM	3.9%	17.6%	3.4%	10.5%	8.1%	1.4x	1.2x	11.9x
	Mean	5.3%	19.6%	3.9%	11.4%	-0.3%	122.3%	1.0x	9.6x
	Median	4.3%	19.2%	3.6%	10.3%	1.6%	118.8%	1.1x	10.2x

Source: Capital IQ

Valuation Metrics (cont.)

Return Profile, Trading Metrics

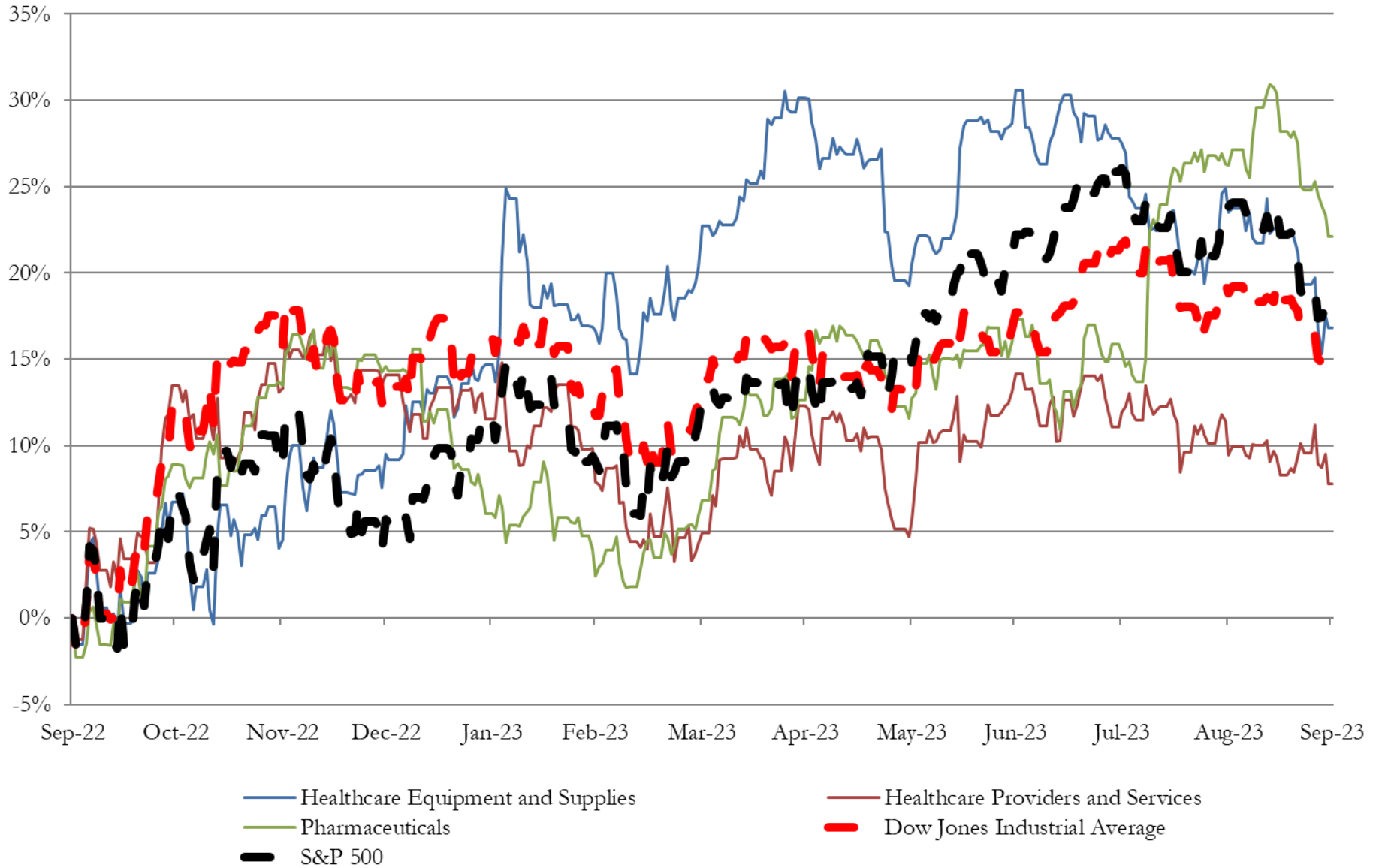
Company Name	Ticker	Return Profile					Trading Multiples		
		Return on Assets	Return on Equity	Revenue Growth	EBITDA Margin	EBITDA Growth	5-yr Beta	TEV / LTM Revenue	TEV / LTM EBITDA
Pharmaceuticals									
Eli Lilly and Company	ABBV	10.2%	65.6%	1.5%	33.1%	-7.2%	0.3x	19.1x	57.8x
AbbVie Inc.	PFE	9.2%	63.0%	-2.3%	52.1%	-5.4%	0.5x	5.6x	10.8x
Merck & Co., Inc.	LLY	5.1%	7.6%	2.0%	21.1%	-42.5%	0.4x	5.0x	23.8x
Pfizer Inc.	MRK	7.6%	23.1%	-23.0%	39.9%	-28.8%	0.6x	2.7x	6.7x
Bristol-Myers Squibb Company	BMJ	5.6%	24.7%	-4.2%	41.4%	-12.3%	0.3x	3.3x	7.9x
Perrigo Company plc	PRGO	1.5%	-1.2%	6.6%	13.5%	49.8%	0.9x	1.7x	12.3x
Amneal Pharmaceuticals, Inc.	AMRX	3.8%	6.1%	8.9%	20.4%	14.3%	1.2x	1.4x	6.8x
	Mean	6.1%	27.0%	-1.5%	31.6%	-4.6%	60.0%	5.5x	18.0x
	Median	5.6%	23.1%	1.5%	33.1%	-7.2%	46.8%	3.3x	10.8x

Source: Capital IQ

3

LTM Equity Performance

Major Indexes



Source: Capital IQ

4

Recent M&A Activity

Last Twelve (12) Months as of September 30, 2023

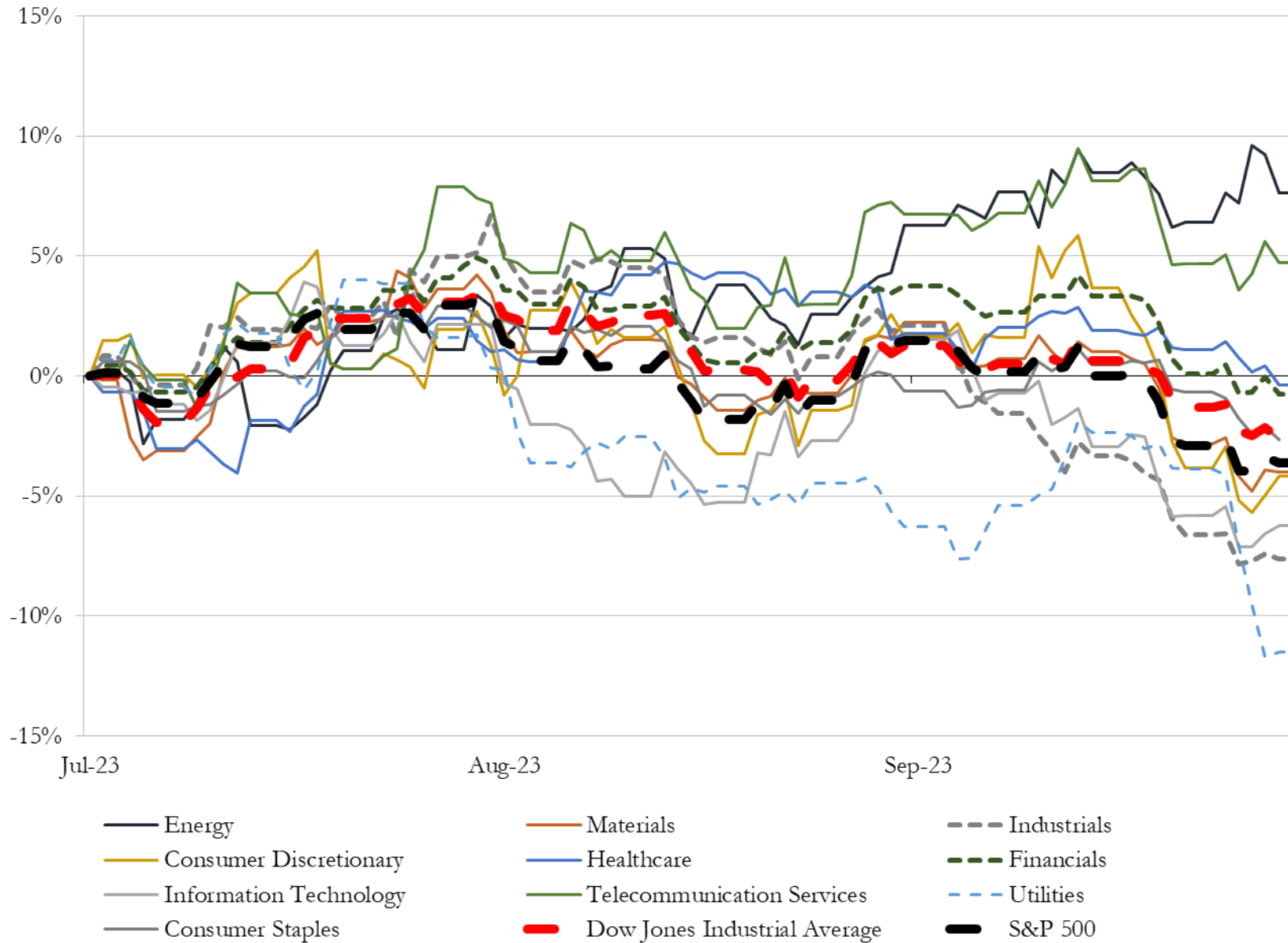
(USD in millions)

Close Date	Target	Acquirer	Implied TEV
May-23	Oak Street Health, Inc.	CVS Health Corporation	\$10,467
Jun-23	Prometheus Biosciences, Inc.	Merck & Co., Inc.	\$10,163
Sep-23	Syneos Health, Inc.	Veritas Capital Fund Management, L.L.C; Elliott Investment Management L.P.;	\$7,377
Sep-23	Reata Pharmaceuticals, Inc.	Biogen Inc.	\$7,368
Jul-23	IVERIC bio, Inc.	Astellas US Holding, Inc.	\$5,424
Sep-23	NuVasive, Inc.	Globus Medical, Inc.	\$3,592
Aug-23	Chinook Therapeutics, Inc.	Novartis AG	\$3,149
Apr-23	Provention Bio, Inc.	Sanofi	\$2,784
Jun-23	OneOncology, LLC	AmerisourceBergen Corporation (nka:Cencora, Inc.); TPG Inc.	\$2,100
Aug-23	Versanis Bio, Inc.	Eli Lilly and Company	\$1,925
Aug-23	DICE Therapeutics, Inc.	Eli Lilly and Company	\$1,890
Aug-23	Spectrum Plastics Group, Inc.	DuPont de Nemours, Inc.	\$1,750
Jun-23	CTI BioPharma Corp.	Swedish Orphan Biovitrum AB (publ)	\$1,694
Jun-23	Heska Corporation	Antech Diagnostics, Inc.	\$1,419
Jul-23	worldwide commercial rights for Zyprexa	CHEPLAPHARM Arzneimittel GmbH	\$1,405
Sep-23	Nextech Systems, LLC	TPG Capital, L.P.	\$1,400
Aug-23	Kerecis LLC	Coloplast A/S	\$1,300
Jun-23	BAQSIMI worldwide and related assets of Eli Lilly and Company	Amphastar Medication Co., LLC	\$1,200
Sep-23	Assets of early-stage rare disease gene therapy portfolio of Pfizer Inc.	Alexion Pharmaceuticals, Inc.	\$1,000
Jul-23	DTx Pharma, Inc.	Novartis AG	\$1,000
Aug-23	CorEvitas, LLC	Thermo Fisher Scientific Inc.	\$913
Apr-23	Cardiovascular Systems, Inc.	Abbott Laboratories	\$772
Aug-23	Surgical Instrumentation platform of Becton, Dickinson and Company	STERIS Corporation	\$540
Jun-23	Haystack Oncology, Inc.	Quest Diagnostics Incorporated	\$453
Sep-23	Bile Acid Product Portfolio	Mirum Pharmaceuticals, Inc.	\$445
Sep-23	Paratek Pharmaceuticals, Inc.	Novo Holdings A/S; Gurnet Point Capital Limited	\$399
Aug-23	Sigilon Therapeutics, Inc.	Eli Lilly and Company	\$299
Jul-23	Spectrum Pharmaceuticals, Inc.	Assertio Holdings, Inc.	\$264
May-23	Helmer Scientific, LLC	Trane Technologies plc	\$263
Jun-23	Satsuma Pharmaceuticals, Inc.	Shin Nippon Biomedical Laboratories, Ltd.	\$180

Source: Capital IQ

5 Change in Market Capitalization by Sector

Last Three (3) Months as of September 30, 2023

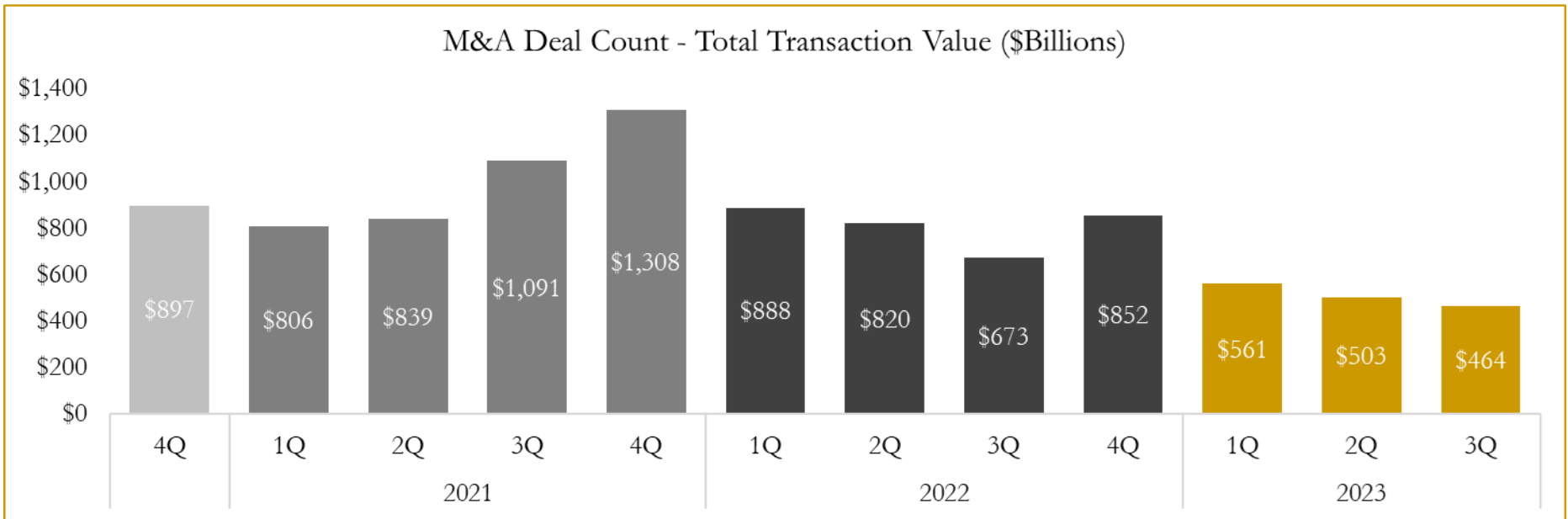
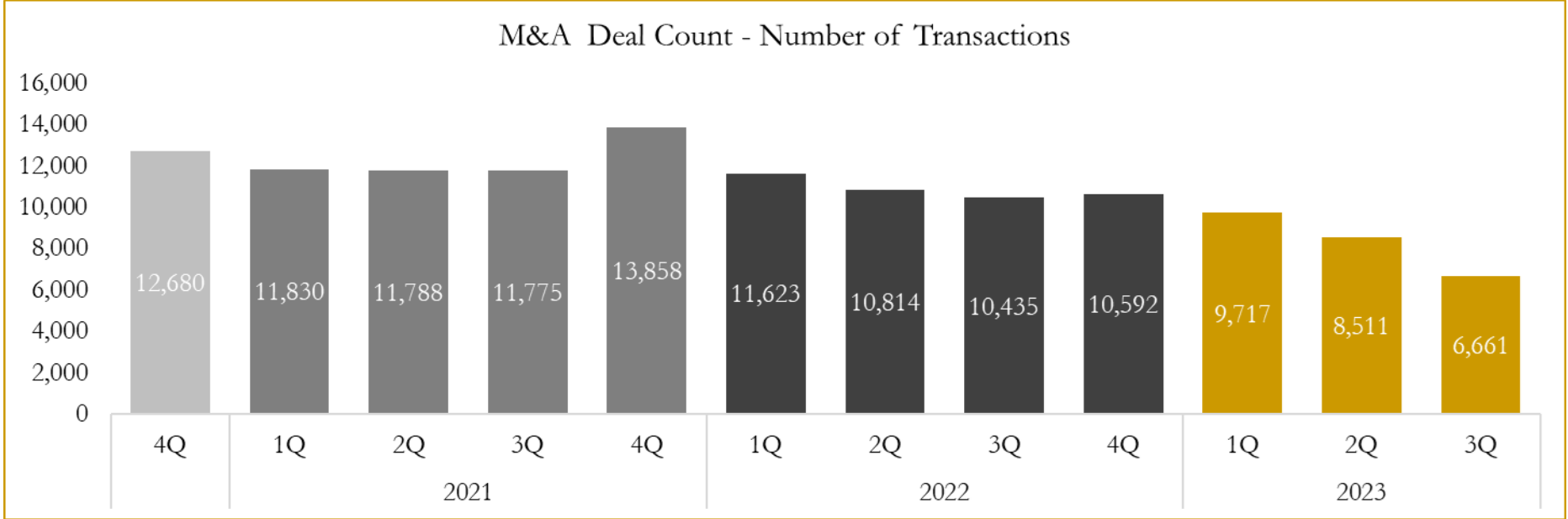


Source: Capital IQ

6

M&A Deal Flow Statistics

Last Three (3) Years as of September 30, 2023



Source: Capital IQ

Houlihan Capital is a leading, solutions-driven valuation, financial advisory and investment banking firm. We pride ourselves on being thought leaders in an ever-changing landscape.

Houlihan Capital is SOC-compliant, a FINRA and SIPC member and committed to the highest levels of professional ethics and standards.

Valuation & Financial Advisory

- **Portfolio Valuation (ASC 820)**
- **Complex & Illiquid Securities (Level 3)**
- **Cryptoasset /Blockchain Valuations**
 - Locked Token Valuations
- **Enterprise Valuations**
- **Fairness & Solvency Opinions**
 - SPAC Fairness
- **Estate & Gift Valuations**
- **Purchase Price Allocation (ASC 805)**
- **Goodwill Impairment Testing (ASC 350)**
- **Stock-based Compensation (ASC 718, IRC 409A)**

Investment Banking

- **Mergers & Acquisitions**
 - Sell-Side Advisory
 - Sale of Minority Ownership Positions
 - Leveraged Buyouts
 - Majority Recapitalizations
 - Corporate Divestitures
- **Corporate Financial Services**
 - Financial Modeling
 - Investor Presentation
 - Valuation Analysis
 - Strategic Advisory

For questions or inquiries regarding our services, please contact:

info@houlihancapital.com