



Industry Update
Steel
Q3 2023

1

Financial Performance

Size Profile, LTM Financials, Forward Estimates

(USD in millions, except per share data)

Company Name	Ticker	Size Profile			LTM Operating Data		Forward Estimates		
		Price at 09/30/23	% of 52 Week High	TEV	Total Assets	LTM Revenue	LTM EBITDA	2023 Est. Revenue	2023 Est. EBITDA
Steel Industry									
Nucor Corporation	NUE	\$156.35	85.6%	\$39,497	\$33,380	\$37,458	\$8,831	\$34,396	\$7,291
Steel Dynamics, Inc.	STLD	\$107.22	78.6%	\$18,284	\$14,551	\$20,453	\$4,298	\$18,956	\$3,756
Reliance Steel & Aluminum Co.	RS	\$262.23	88.6%	\$15,730	\$10,440	\$15,704	\$2,271	\$14,726	\$2,002
Cleveland-Cliffs Inc.	CLF	\$15.63	68.5%	\$12,007	\$18,303	\$21,976	\$1,646	\$21,907	\$2,096
United States Steel Corporation	X	\$32.48	99.4%	\$8,760	\$20,309	\$19,019	\$2,460	\$17,981	\$2,116
ATI Inc.	ATI	\$41.15	85.9%	\$6,459	\$4,435	\$4,127	\$559	\$4,209	\$583
Commercial Metals Company	CMC	\$49.41	85.1%	\$5,670	\$6,639	\$8,800	\$1,387	\$8,348	\$1,351
Carpenter Technology Corporation	CRS	\$67.21	94.4%	\$3,874	\$3,054	\$2,550	\$238	\$2,929	\$373
Worthington Industries, Inc.	WOR	\$61.82	79.9%	\$3,559	\$3,477	\$4,701	\$367	\$4,467	\$570
Sims Limited	SGM	\$13.53	79.2%	\$3,026	\$4,706	\$8,084	\$150	\$7,915	\$459
Ryerson Holding Corporation	RYI	\$29.09	65.1%	\$1,668	\$2,522	\$5,581	\$262	\$5,106	\$248
SunCoke Energy, Inc.	SXC	\$10.15	97.4%	\$1,263	\$1,643	\$2,053	\$283	\$1,781	\$267
TimkenSteel Corporation	TMST	\$21.72	92.5%	\$690	\$1,149	\$1,242	\$59	\$1,351	\$161
Haynes International, Inc.	HAYN	\$46.52	76.5%	\$658	\$688	\$573	\$81	\$605	\$87
Universal Stainless & Alloy Products, Inc.	USAP	\$13.11	77.2%	\$200	\$355	\$237	\$17	\$277	\$32

Source: Capital IQ

2

Valuation Metrics

Return Profile, Trading Multiples

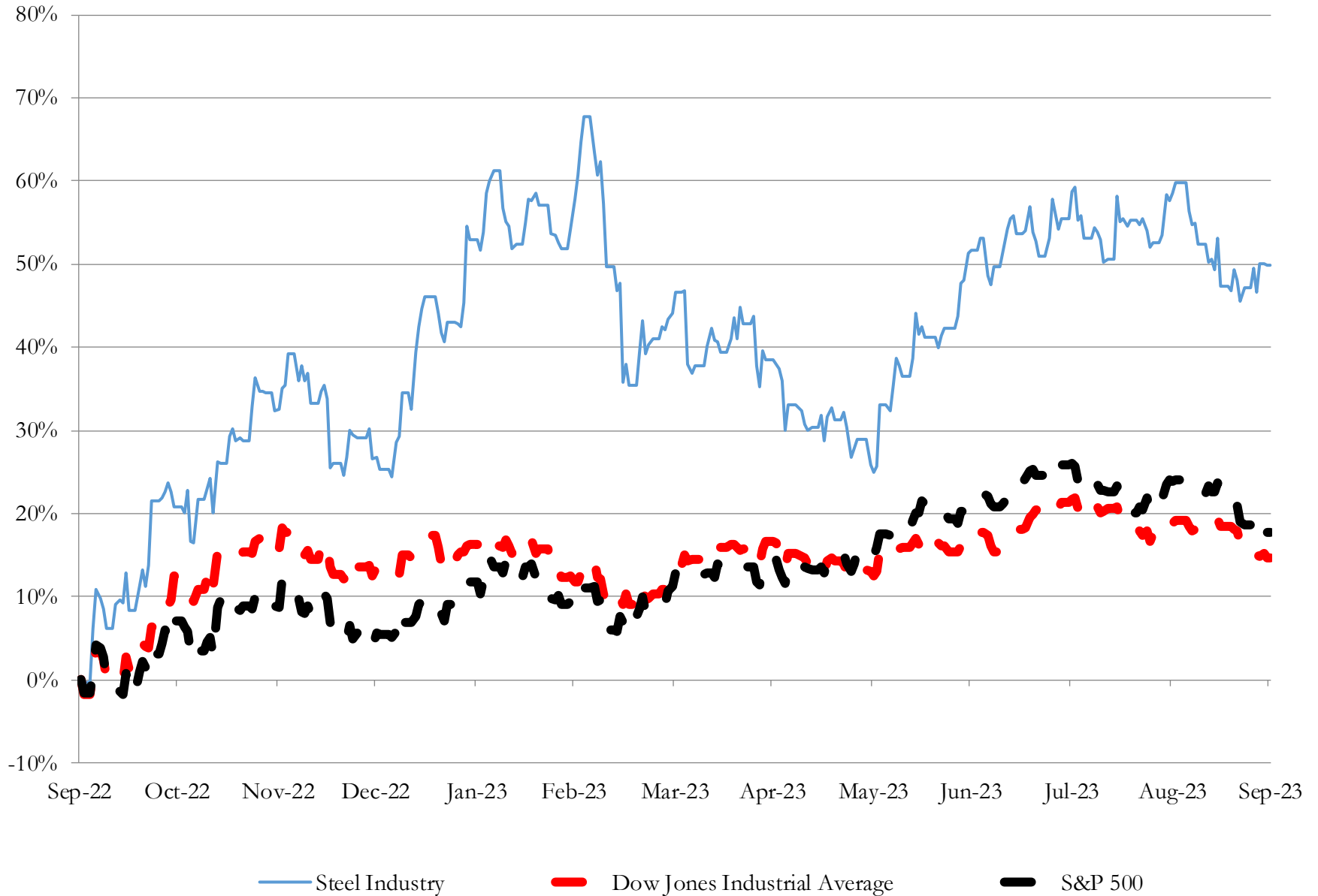
Company Name	Ticker	Return Profile					Trading Multiples		
		Return on Assets	Return on Equity	Revenue Growth	EBITDA Margin	EBITDA Growth	5-yr Beta	TEV / LTM Revenue	TEV / LTM EBITDA
Steel Industry									
Nucor Corporation	NUE	14.6%	30.6%	-12.8%	23.6%	-33.7%	1.7x	1.0x	4.4x
Steel Dynamics, Inc.	STLD	17.2%	37.2%	-7.8%	21.0%	-30.9%	1.5x	0.9x	4.3x
Reliance Steel & Aluminum Co.	RS	12.2%	20.9%	-7.6%	14.5%	-20.9%	0.9x	1.0x	6.8x
Cleveland-Cliffs Inc.	CLF	2.2%	3.6%	-7.0%	7.5%	-72.7%	2.2x	0.5x	7.2x
United States Steel Corporation	X	5.0%	12.7%	-17.7%	12.9%	-62.4%	2.1x	0.5x	3.6x
ATI Inc.	ATI	5.9%	27.0%	25.6%	13.5%	16.5%	1.3x	1.6x	11.5x
Commercial Metals Company	CMC	11.3%	23.2%	-1.3%	15.8%	-7.2%	1.3x	0.6x	4.1x
Carpenter Technology Corporation	CRS	2.6%	4.1%	38.9%	9.3%	138.8%	1.7x	1.5x	16.1x
Worthington Industries, Inc.	WOR	4.5%	17.1%	-15.1%	7.8%	1.2%	1.4x	0.8x	9.7x
Sims Limited	SGM	0.2%	7.0%	-12.9%	1.9%	-69.5%	1.3x	0.4x	19.0x
Ryerson Holding Corporation	RYI	4.9%	13.6%	-15.5%	4.7%	-71.1%	1.8x	0.3x	6.4x
SunCoke Energy, Inc.	SXC	5.2%	15.6%	22.7%	13.8%	-2.8%	1.3x	0.6x	4.5x
TimkenSteel Corporation	TMST	0.1%	-0.4%	-14.3%	4.7%	-82.8%	1.7x	0.6x	11.7x
Haynes International, Inc.	HAYN	6.0%	11.8%	29.7%	14.2%	28.3%	1.5x	1.1x	8.0x
Universal Stainless & Alloy Products, Inc.	USAP	-0.2%	-2.1%	31.7%	7.0%	-8.8%	1.0x	0.8x	11.9x
	Mean	6.1%	14.8%	2.4%	11.5%	-18.5%	1.5x	0.8x	8.6x
	Median	5.0%	13.6%	-7.6%	12.9%	-20.9%	1.5x	0.8x	7.2x

Source: Capital IQ

3

LTM Equity Performance

Major Indexes



Source: Capital IQ

4

Recent M&A Activity

Last Twelve (12) Months as of September 30, 2023

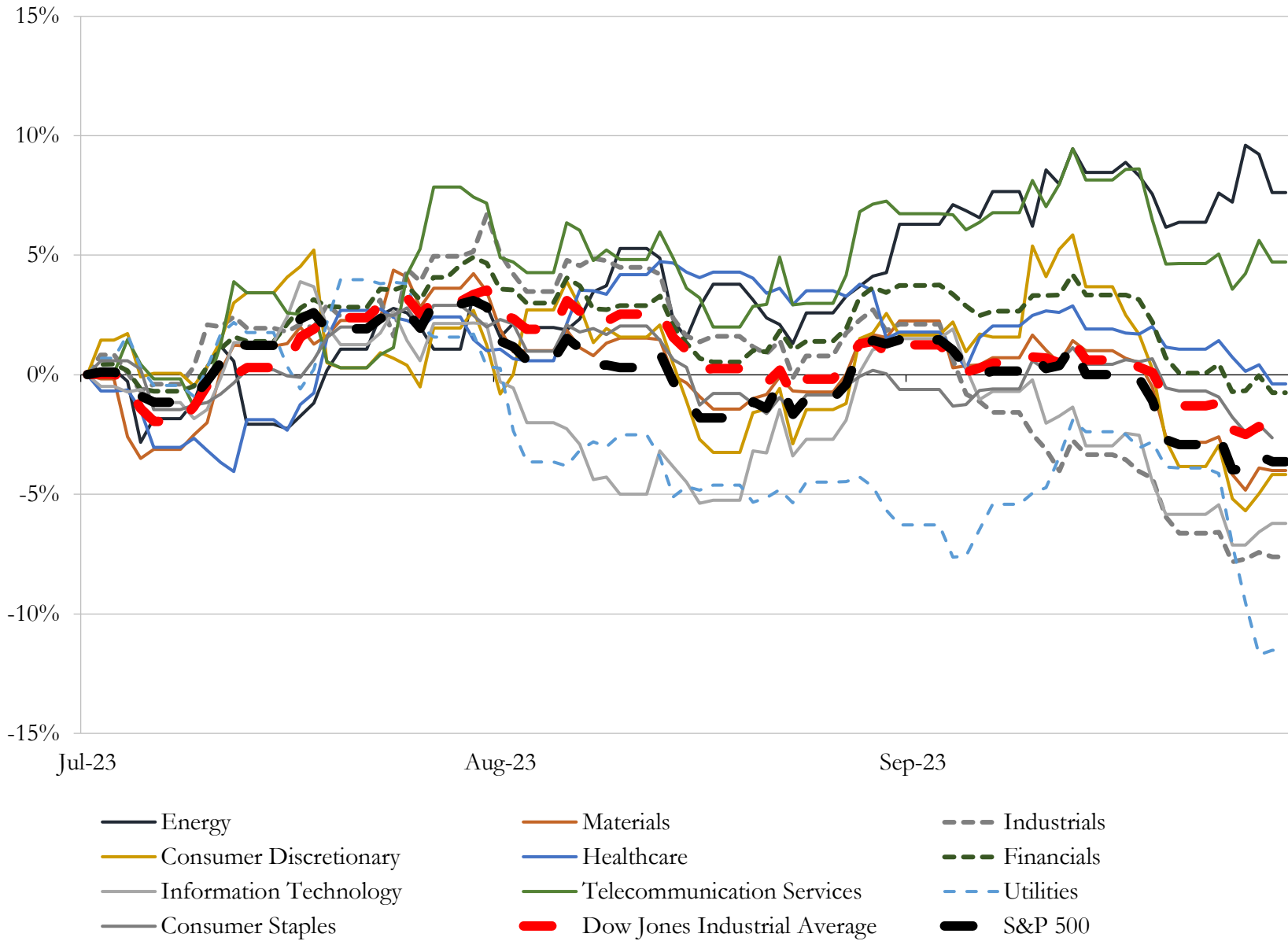
(USD in millions)

Close Date	Target	Acquirer	Implied TEV
Feb-23	FlexSteel Pipeline Technologies, Inc.	Cactus, Inc.	\$699
Apr-23	Berg Europe Holding Corp.	Borusan Mannesmann Pipe US Inc.	\$162
Aug-23	90,000 SF Facility in Mansfield, Ohio	Mill Steel Company, Inc.	NA
Jul-23	Tricon Wear Solutions LLC	Construction Forms, Inc.	NA
Jun-23	Pegasus Steel, LLC	Arlington Management Employees, LLC	NA
Jun-23	Gearco Incorporated	MW Components	NA
May-23	The Dotson Company, Inc.	MacLean Power, LLC	NA
Apr-23	LEFCO Industries LLC	Evergreen Cooperative Corporation; The Fund For Employee Ownership	NA
Mar-23	Federal Steel Supply, Inc.	Westbridge Capital Ltd.	NA
Jan-23	Penn Wire Products Corporation	Wire-Mesh Products, Inc.	NA
Dec-22	Assets of Calstrip Industries, Inc.	Steel Technologies LLC	NA
Dec-22	Inwesco Incorporated	CRH plc	NA
Nov-22	SteelPro, LLC	Heartland Steel Holdings, LLC	NA
Nov-22	Steel Industries, Inc.	Forged Solutions Group Limited	NA
Nov-22	Gerber Metal Supply Company	All Metals Industries, Inc	NA
Oct-22	ESP Specialty Steel Products LLC	SPS Companies, Inc	NA
Oct-22	California Expanded Metal Products Company	Jfe Shoji America Holdings Inc.	NA

Source: Capital IQ

5 Change in Market Capitalization by Sector

Last Three (3) Months as of September 30, 2023

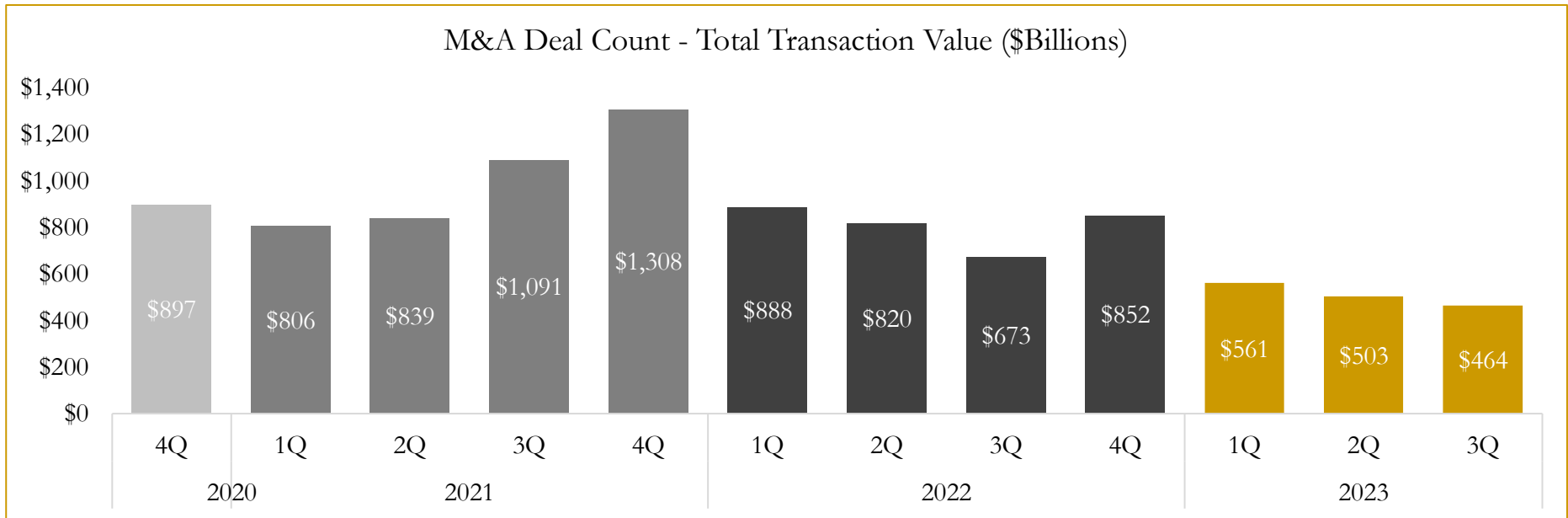
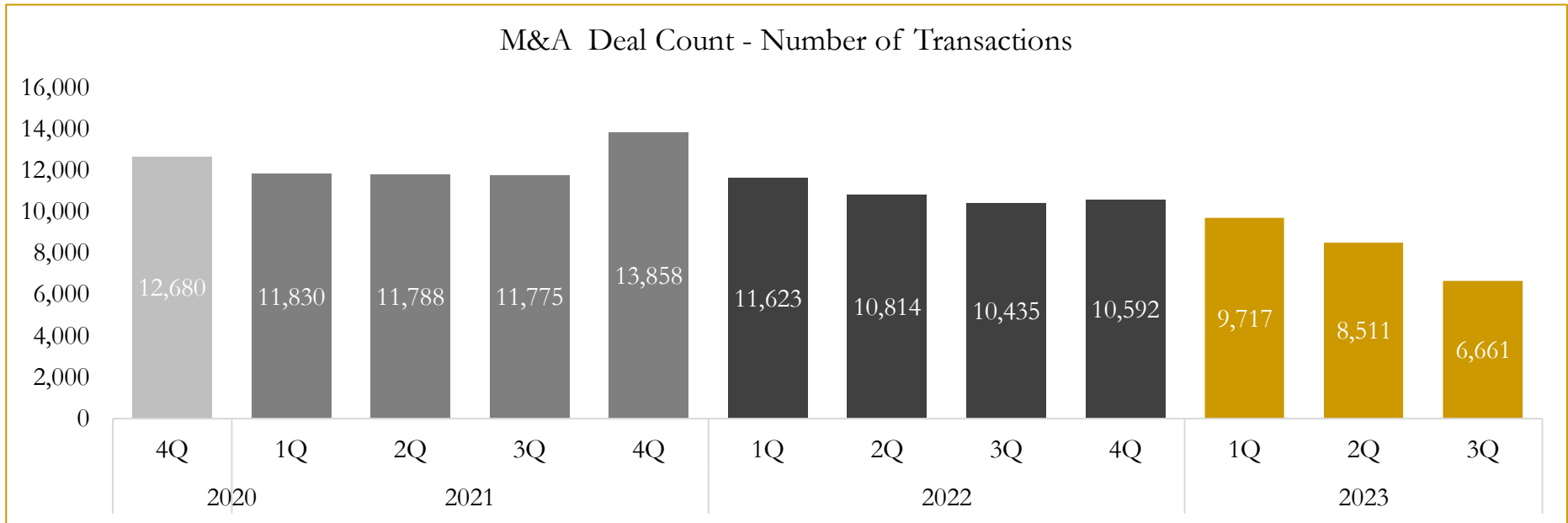


Source: Capital IQ

6

M&A Deal Flow Statistics

Last Three (3) Years as of September 30, 2023



Source: Capital IQ

Houlihan Capital is a leading, solutions-driven valuation, financial advisory and investment banking firm. We pride ourselves on being thought leaders in an ever-changing landscape.

Houlihan Capital is SOC-compliant, a FINRA and SIPC member and committed to the highest levels of professional ethics and standards.

Valuation & Financial Advisory

- **Portfolio Valuation (ASC 820)**
- **Complex & Illiquid Securities (Level 3)**
- **Cryptoasset /Blockchain Valuations**
 - Locked Token Valuations
- **Enterprise Valuations**
- **Fairness & Solvency Opinions**
 - SPAC Fairness
- **Estate & Gift Valuations**
- **Purchase Price Allocation (ASC 805)**
- **Goodwill Impairment Testing (ASC 350)**
- **Stock-based Compensation (ASC 718, IRC 409A)**

Investment Banking

- **Mergers & Acquisitions**
 - Sell-Side Advisory
 - Sale of Minority Ownership Positions
 - Leveraged Buyouts
 - Majority Recapitalizations
 - Corporate Divestitures
- **Corporate Financial Services**
 - Financial Modeling
 - Investor Presentation
 - Valuation Analysis
 - Strategic Advisory

For questions or inquiries regarding our services, please contact:

info@houlihancapital.com