

Industry Update

Steel

Q4 2023

1

Financial Performance

Size Profile, LTM Financials, Forward Estimates

(USD in millions, except per share data)

Company Name	Ticker	Size Profile			LTM Operating Data			Forward Estimates	
		Price at 12/31/23	% of 52 Week High	TEV	Total Assets	LTM Revenue	LTM EBITDA	2023 Est. Revenue	2023 Est. EBITDA
Steel Industry									
Nucor Corporation	NUE	\$174.04	95.3%	\$44,207	\$34,268	\$35,733	\$8,010	\$32,654	\$5,596
Steel Dynamics, Inc.	STLD	\$118.10	86.5%	\$19,693	\$14,908	\$18,795	\$3,589	\$17,838	\$2,567
Reliance Steel & Aluminum Co.	RS	\$279.68	94.5%	\$16,572	\$10,493	\$15,079	\$2,121	\$13,990	\$1,755
Cleveland-Cliffs Inc.	CLF	\$20.42	89.4%	\$12,992	\$18,059	\$21,928	\$1,888	\$21,675	\$2,473
United States Steel Corporation	X	\$48.65	96.9%	\$12,029	\$20,395	\$18,247	\$2,152	\$16,261	\$1,705
ATI Inc.	ATI	\$45.47	94.9%	\$7,115	\$4,731	\$4,120	\$563	\$4,367	\$709
Commercial Metals Company	CMC	\$49.41	85.1%	\$5,670	\$6,639	\$8,800	\$1,387	\$8,348	\$1,351
Carpenter Technology Corporation	CRS	\$70.80	95.6%	\$3,834	\$3,159	\$2,724	\$346	\$2,959	\$479
Worthington Industries, Inc.	WOR	\$61.82	79.9%	\$3,559	\$3,477	\$4,701	\$367	\$4,467	\$570
Sims Limited	SGM	\$15.56	91.1%	\$3,171	\$4,706	\$8,084	\$150	\$8,728	\$491
Ryerson Holding Corporation	RYI	\$34.68	77.6%	\$1,832	\$2,434	\$5,285	\$218	\$4,619	\$255
SunCoke Energy, Inc.	SXC	\$10.74	95.9%	\$1,271	\$1,679	\$2,057	\$264	\$1,610	\$236
Haynes International, Inc.	HAYN	\$57.05	93.8%	\$819	\$706	\$590	\$78	\$661	\$105
TimkenSteel Corporation	TMST	\$23.45	96.5%	\$690	\$1,154	\$1,280	\$104	\$1,398	\$169
Universal Stainless & Alloy Products, Inc.	USAP	\$20.08	97.8%	\$272	\$357	\$262	\$23	\$312	\$46

Source: Capital IQ

2

Valuation Metrics

Return Profile, Trading Multiples

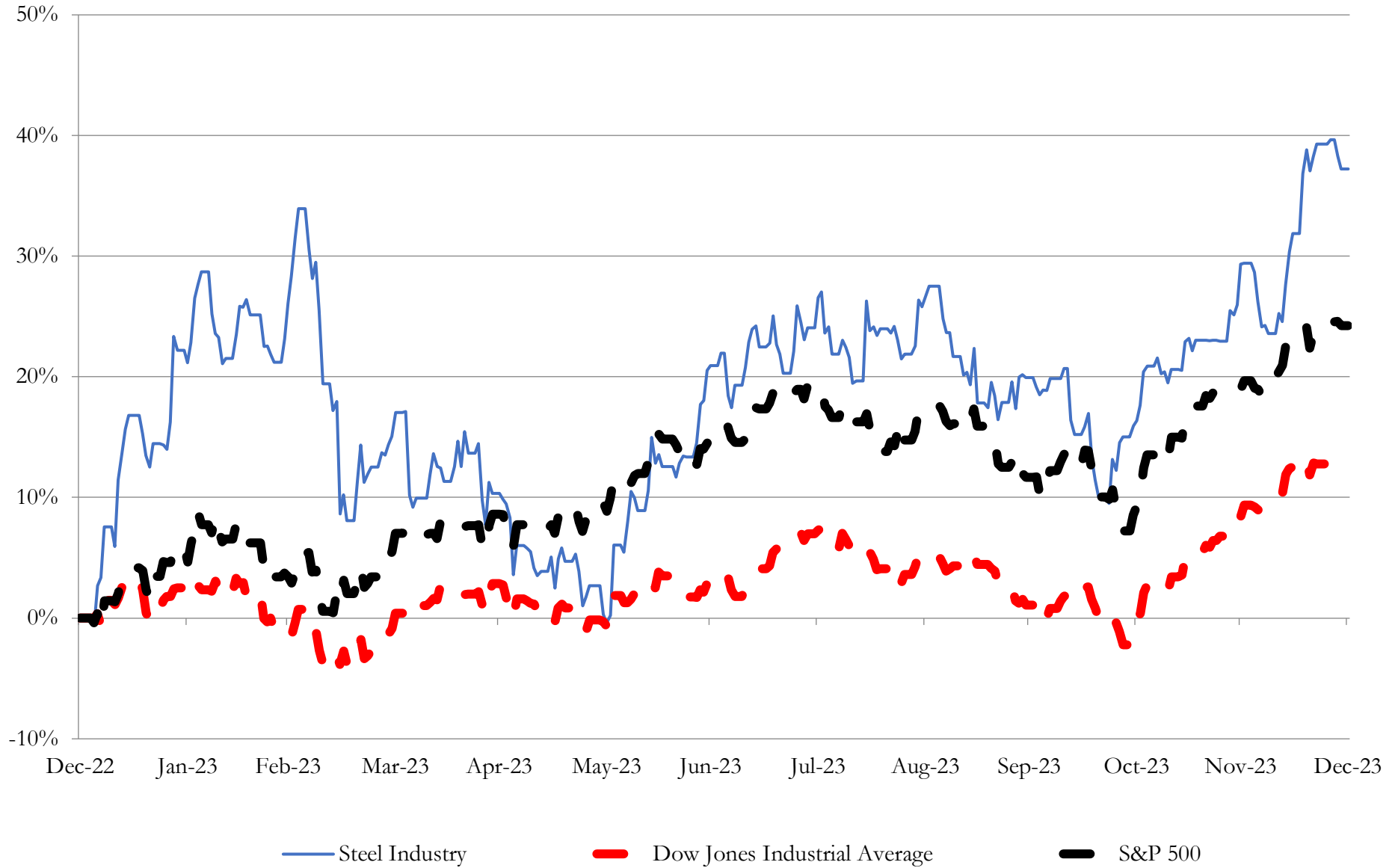
Company Name	Ticker	Return Profile						Trading Multiples	
		Return on Assets	Return on Equity	Revenue Growth	EBITDA Margin	EBITDA Growth	5-yr Beta	TEV / LTM Revenue	TEV / LTM EBITDA
Steel Industry									
Nucor Corporation	NUE	12.8%	26.6%	-17.2%	22.4%	-37.8%	1.6x	1.2x	5.5x
Steel Dynamics, Inc.	STLD	13.6%	29.1%	-15.6%	19.1%	-34.5%	1.4x	1.0x	5.5x
Reliance Steel & Aluminum Co.	RS	11.3%	19.4%	-13.4%	14.1%	-26.1%	0.9x	1.1x	7.8x
Cleveland-Cliffs Inc.	CLF	2.7%	4.9%	-5.9%	8.6%	-57.8%	2.1x	0.6x	6.9x
United States Steel Corporation	X	4.0%	10.6%	-18.4%	11.8%	-59.7%	2.1x	0.7x	5.6x
ATI Inc.	ATI	5.7%	27.2%	14.7%	13.7%	13.0%	1.2x	1.7x	12.6x
Commercial Metals Company	CMC	11.3%	23.2%	-1.3%	15.8%	-7.2%	1.3x	0.6x	4.1x
Carpenter Technology Corporation	CRS	4.6%	10.3%	26.4%	12.7%	107.4%	1.6x	1.4x	11.1x
Worthington Industries, Inc.	WOR	4.5%	17.1%	-15.1%	7.8%	1.2%	1.4x	0.8x	9.7x
Sims Limited	SGM	0.2%	7.0%	-12.9%	1.9%	-69.5%	1.3x	0.4x	20.9x
Ryerson Holding Corporation	RYI	4.0%	10.8%	-19.6%	4.1%	-73.0%	1.7x	0.3x	8.4x
SunCoke Energy, Inc.	SXC	4.5%	9.7%	12.8%	12.9%	-11.8%	1.2x	0.6x	4.8x
TimkenSteel Corporation	TMST	2.5%	4.8%	-10.1%	8.1%	-62.5%	1.7x	0.5x	6.7x
Haynes International, Inc.	HAYN	5.6%	10.4%	20.3%	13.2%	-1.4%	1.5x	1.4x	10.5x
Universal Stainless & Alloy Products, Inc.	USAP	1.0%	-0.6%	38.7%	8.9%	26.3%	1.0x	1.0x	11.7x
	Mean	5.9%	14.0%	-1.1%	11.7%	-19.6%	1.5x	0.9x	8.8x
	Median	4.5%	10.6%	-10.1%	12.7%	-26.1%	1.4x	0.8x	7.8x

Source: Capital IQ

3

LTM Equity Performance

Major Indexes



Source: Capital IQ

4

Recent M&A Activity

Last Twelve (12) Months as of December 31, 2023

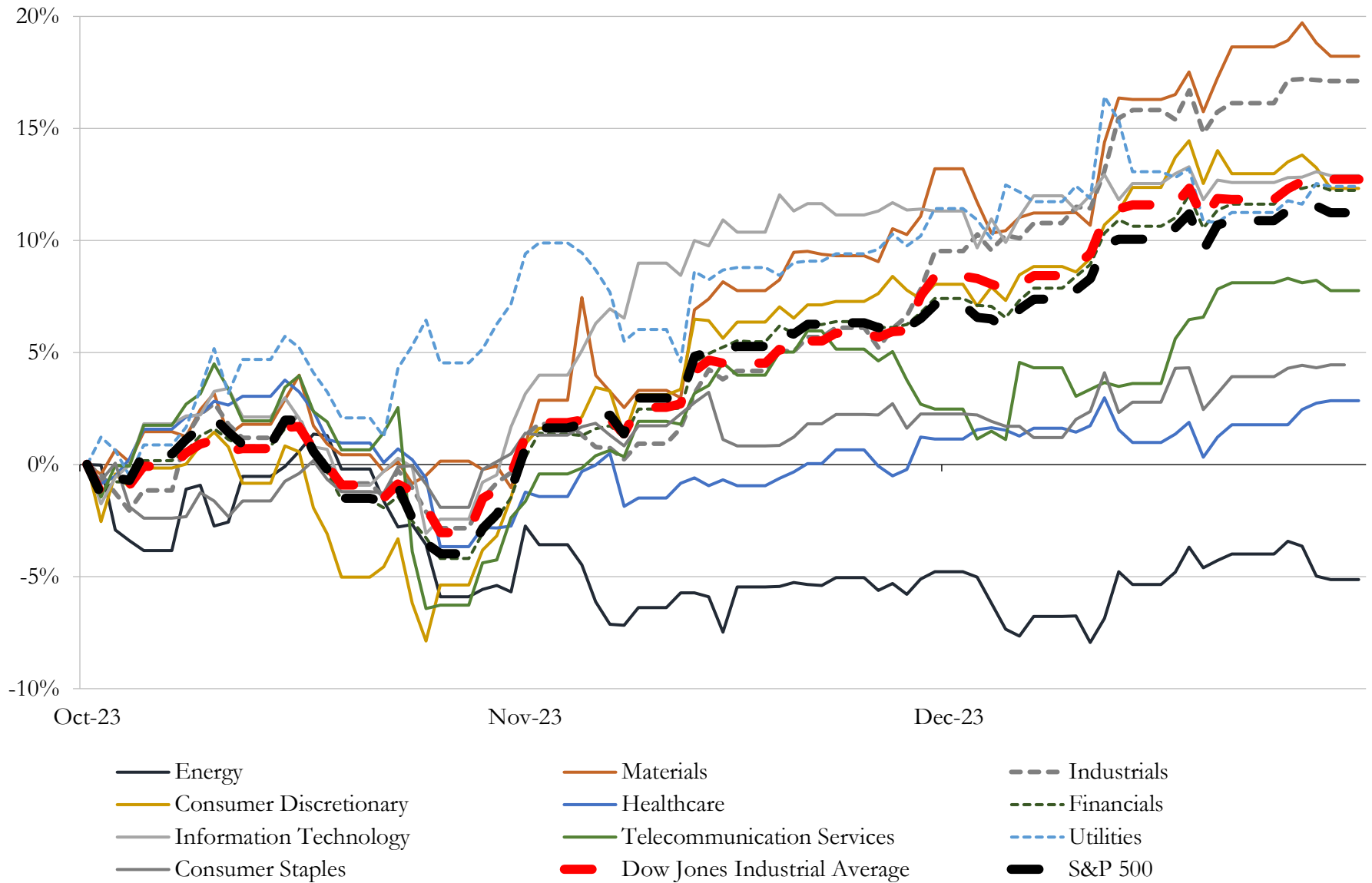
(USD in millions)

Close Date	Target	Acquirer	Implied TEV
Feb-23	FlexSteel Pipeline Technologies, Inc.	Cactus, Inc.	\$699
Apr-23	Berg Europipe Holding Corp.	Borusan Mannesmann Pipe US Inc.	\$162
Dec-22	Appalachian Iron Inc.	Magnum Mining and Exploration Limited	\$1
Dec-23	The Frog, Switch & Manufacturing Company	Cumberland County Historical Society	NA
Nov-23	FreshStor, Inc.	Boveda Inc.	NA
Nov-23	TSA Processing, Inc.	Ryerson Holding Corporation	NA
Aug-23	90,000 SF Facility in Mansfield, Ohio	Mill Steel Company, Inc.	NA
Jul-23	Tricon Wear Solutions LLC	Construction Forms, Inc.	NA
Jun-23	Pegasus Steel, LLC	Arlington Management Employees, LLC	NA
Jun-23	Gearco Incorporated	MW Components	NA
May-23	The Dotson Company, Inc.	MacLean Power, LLC	NA
Apr-23	LEFCO Industries LLC	Evergreen Cooperative Corporation; The Fund For Employee Ownership	NA
Mar-23	Federal Steel Supply, Inc.	Westbridge Capital Ltd.	NA
Jan-23	Penn Wire Products Corporation	Wire-Mesh Products, Inc.	NA

Source: Capital IQ

5 Change in Market Capitalization by Sector

Last Three (3) Months as of December 31, 2023

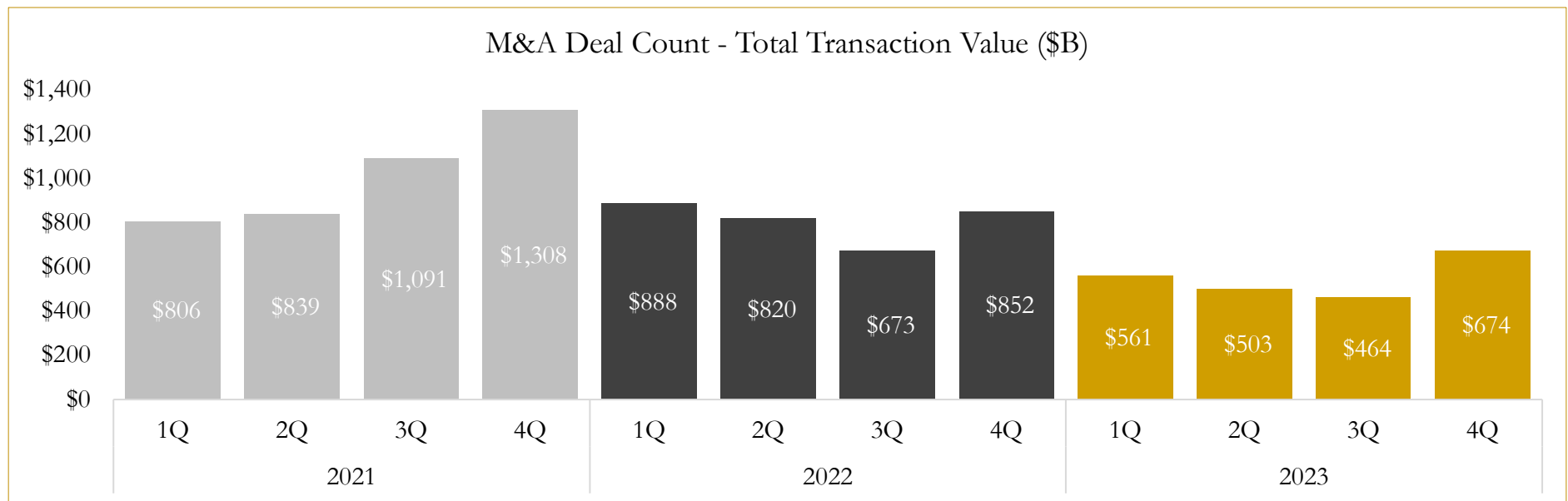
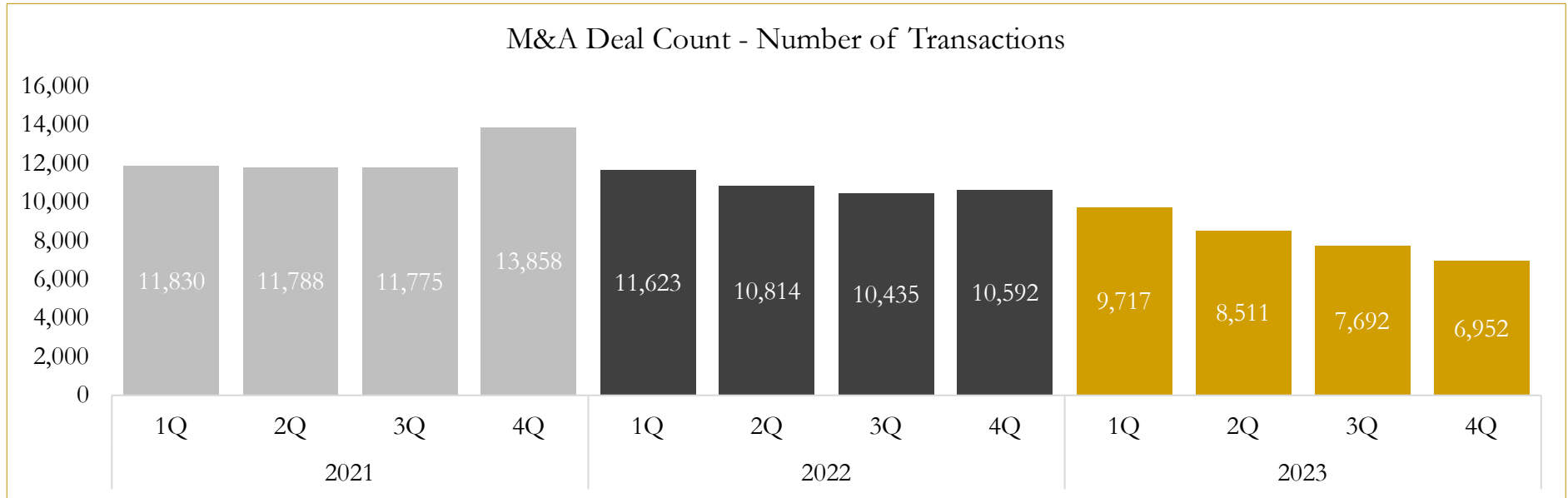


Source: Capital IQ

6

M&A Deal Flow Statistics

Last Three (3) Years as of December 31, 2023



Source: Capital IQ

Houlihan Capital is a leading, solutions-driven valuation, financial advisory and investment banking firm. We pride ourselves on being thought leaders in an ever-changing landscape.

Houlihan Capital is SOC-compliant, a FINRA and SIPC member and committed to the highest levels of professional ethics and standards.

Valuation & Financial Advisory

- **Portfolio Valuation (ASC 820)**
- **Complex & Illiquid Securities (Level 3)**
- **Cryptoasset /Blockchain Valuations**
 - Locked Token Valuations
- **Enterprise Valuations**
- **Fairness & Solvency Opinions**
 - SPAC Fairness
- **Estate & Gift Valuations**
- **Purchase Price Allocation (ASC 805)**
- **Goodwill Impairment Testing (ASC 350)**
- **Stock-based Compensation (ASC 718, IRC 409A)**

Investment Banking

- **Mergers & Acquisitions**
 - Sell-Side Advisory
 - Sale of Minority Ownership Positions
 - Leveraged Buyouts
 - Majority Recapitalizations
 - Corporate Divestitures
- **Corporate Financial Services**
 - Financial Modeling
 - Investor Presentation
 - Valuation Analysis
 - Strategic Advisory

For questions or inquiries regarding our services, please contact:

info@houlihancapital.com