



Industry Update
Oil and Gas
Q2 2024

1

Financial Performance

Size Profile, LTM Financials, Forward Estimates

(USD in millions, except per share data)

Company Name	Ticker	Size Profile				LTM Operating Data		Forward Estimates	
		Price at 06/30/24	% of 52 Week High	TEV	Total Assets	LTM Revenue	LTM EBITDA	2024 Est. Revenue	2024 Est. EBITDA
Integrated									
Exxon Mobil Corporation	XOM	\$115.12	93.0%	\$553,283	\$460,707	\$345,135	\$70,903	\$355,623	\$78,115
Chevron Corporation	CVX	\$156.42	91.1%	\$285,436	\$260,644	\$195,102	\$40,955	\$197,478	\$47,577
ConocoPhillips	COP	\$114.38	84.6%	\$140,107	\$95,994	\$58,080	\$25,019	\$59,427	\$25,751
Occidental Petroleum Corporation	OXY	\$63.03	88.5%	\$80,876	\$76,216	\$27,122	\$12,233	\$28,368	\$14,933
Hess Corporation	HES	\$147.52	87.9%	\$50,034	\$25,810	\$12,080	\$6,706	\$13,130	\$7,542
Murphy Oil Corporation	MUR	\$41.24	83.9%	\$7,657	\$9,894	\$3,392	\$1,928	\$3,280	\$1,895
Refining and Marketing									
Marathon Petroleum Corporation	MPC	\$173.48	78.5%	\$87,408	\$85,229	\$148,772	\$13,657	\$139,840	\$12,449
Phillips 66	PSX	\$141.17	81.1%	\$75,443	\$75,945	\$151,853	\$7,760	\$144,558	\$8,459
Valero Energy Corporation	VLO	\$156.76	84.8%	\$56,836	\$63,615	\$134,330	\$10,815	\$135,783	\$8,243
PBF Energy Inc.	PBF	\$46.02	73.2%	\$5,222	\$14,076	\$37,254	\$1,486	\$35,404	\$751
CVR Energy, Inc.	CVI	\$34.03	80.6%	\$4,265	\$4,217	\$9,902	\$1,194	\$9,152	\$1,243
Delek US Holdings, Inc.	DK	\$24.76	73.7%	\$3,598	\$6,944	\$15,447	\$482	\$12,505	\$502

Source: Capital IQ

Financial Performance (cont.)

Size Profile, LTM Financials, Forward Estimates

(USD in millions, except per share data)

Company Name	Ticker	Size Profile			LTM Operating Data		Forward Estimates		
		Price at 06/30/24	% of 52 Week High	TEV	Total Assets	LTM Revenue	LTM EBITDA	2024 Est. Revenue	2024 Est. EBITDA
Exploration and Production									
EOG Resources, Inc.	EOG	\$125.87	90.1%	\$71,875	\$45,224	\$24,105	\$13,500	\$24,822	\$13,421
Diamondback Energy, Inc.	FANG	\$200.19	94.4%	\$42,240	\$35,637	\$8,846	\$6,733	\$9,044	\$6,628
Devon Energy Corporation	DVN	\$47.40	86.0%	\$33,926	\$25,162	\$14,750	\$7,465	\$16,029	\$7,804
APA Corporation	APA	\$29.44	63.8%	\$18,556	\$20,195	\$8,908	\$5,417	\$9,400	\$5,875
Southwestern Energy Company	SWN	\$6.73	86.3%	\$11,164	\$9,850	\$5,635	\$3,832	\$5,778	\$2,086
Matador Resources Company	MTDR	\$59.60	83.8%	\$9,197	\$8,518	\$3,017	\$2,244	\$3,571	\$2,433

Source: Capital IQ

2

Valuation Metrics

Return Profile, Trading Multiples

Company Name	Ticker	Return Profile					Trading Multiples		
		Return on Assets	Return on Equity	Revenue Growth	EBITDA Margin	EBITDA Growth	5-yr Beta	TEV / LTM Revenue	TEV / LTM EBITDA
Integrated									
Exxon Mobil Corporation	XOM	7.4%	14.7%	-5.9%	20.5%	-9.3%	0.9x	1.6x	7.8x
Chevron Corporation	CVX	6.0%	11.8%	-9.1%	21.0%	-20.6%	1.1x	1.5x	7.0x
ConocoPhillips	COP	10.9%	22.0%	-15.6%	43.1%	-12.6%	1.2x	2.4x	5.6x
Occidental Petroleum Corporation	OXY	4.5%	14.4%	-14.0%	45.1%	-25.0%	1.6x	3.0x	6.6x
Hess Corporation	HES	11.5%	30.1%	14.7%	55.5%	28.1%	1.2x	4.1x	7.5x
Murphy Oil Corporation	MUR	5.9%	12.7%	-10.9%	56.8%	-19.4%	2.3x	2.3x	4.0x
	Mean	7.7%	17.6%	-6.8%	40.3%	-9.8%	1.4x	2.5x	6.4x
	Median	6.7%	14.6%	-10.0%	44.1%	-16.0%	1.2x	2.3x	6.8x
Refining and Marketing									
Marathon Petroleum Corporation	MPC	7.5%	28.9%	-5.5%	9.2%	-32.8%	1.4x	0.6x	6.4x
Phillips 66	PSX	4.8%	16.9%	-1.9%	5.1%	-33.3%	1.3x	0.5x	9.7x
Valero Energy Corporation	VLO	8.1%	21.8%	-11.5%	8.1%	-38.6%	1.4x	0.4x	5.3x
PBF Energy Inc.	PBF	5.3%	12.5%	-11.4%	4.0%	-57.8%	1.6x	0.1x	3.5x
CVR Energy, Inc.	CVI	11.0%	57.4%	-13.6%	12.0%	-14.0%	1.5x	0.4x	3.7x
Delek US Holdings, Inc.	DK	1.0%	-7.4%	-13.8%	3.1%	6.3%	1.2x	0.2x	7.5x
	Mean	6.3%	21.7%	-9.6%	6.9%	-28.3%	1.4x	0.4x	6.0x
	Median	6.4%	19.4%	-11.5%	6.6%	-33.0%	1.4x	0.4x	5.8x

Source: Capital IQ

Valuation Metrics (cont.)

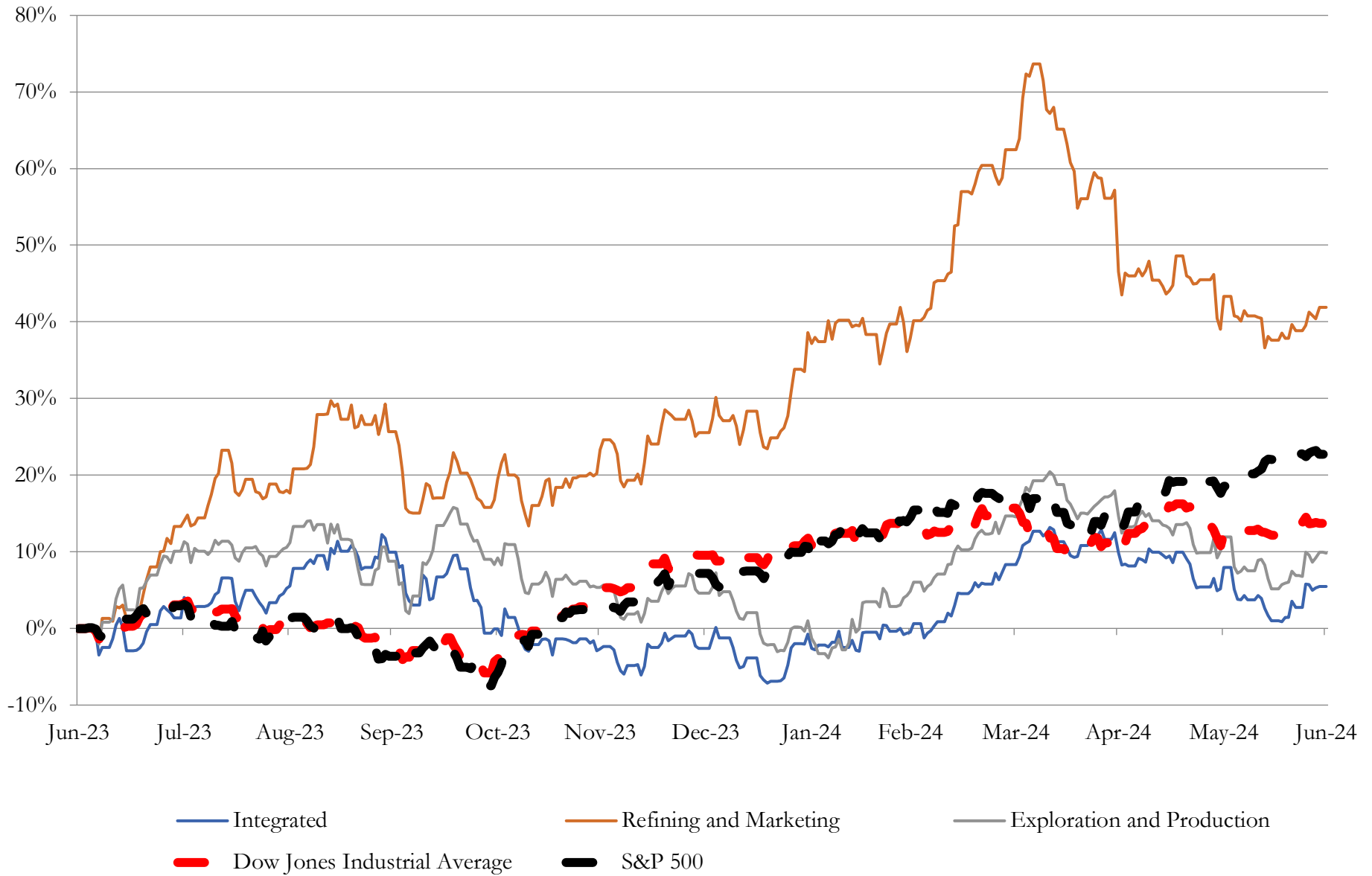
Return Profile, Trading Metrics

Company Name	Ticker	Return Profile					Trading Multiples		
		Return on Assets	Return on Equity	Revenue Growth	EBITDA Margin	EBITDA Growth	5-yr Beta	TEV / LTM Revenue	TEV / LTM EBITDA
Exploration and Production									
EOG Resources, Inc.	EOG	13.6%	27.1%	-4.4%	56.0%	-8.6%	1.3x	3.0x	5.3x
Diamondback Energy, Inc.	FANG	9.6%	21.3%	11.3%	76.1%	6.5%	1.9x	4.8x	6.3x
Devon Energy Corporation	DVN	12.0%	29.7%	-9.4%	50.6%	-15.2%	2.1x	2.3x	4.5x
APA Corporation	APA	12.7%	79.4%	-1.3%	60.8%	-1.3%	3.3x	2.1x	3.4x
Southwestern Energy Company	SWN	5.3%	-53.8%	-50.2%	68.0%	-45.2%	1.2x	2.0x	2.9x
Matador Resources Company	MTDR	11.1%	24.0%	16.8%	74.4%	17.1%	3.3x	3.0x	4.1x
	Mean	11.0%	29.6%	-5.5%	63.8%	-6.8%	2.3x	2.8x	4.3x
Source: Capital IQ	Median	12.0%	27.1%	-1.3%	60.8%	-1.3%	2.1x	2.3x	4.1x

3

LTM Equity Performance

Major Indexes



Source: Capital IQ

4

Recent M&A Activity

Last Twelve (12) Months as of June 30, 2024

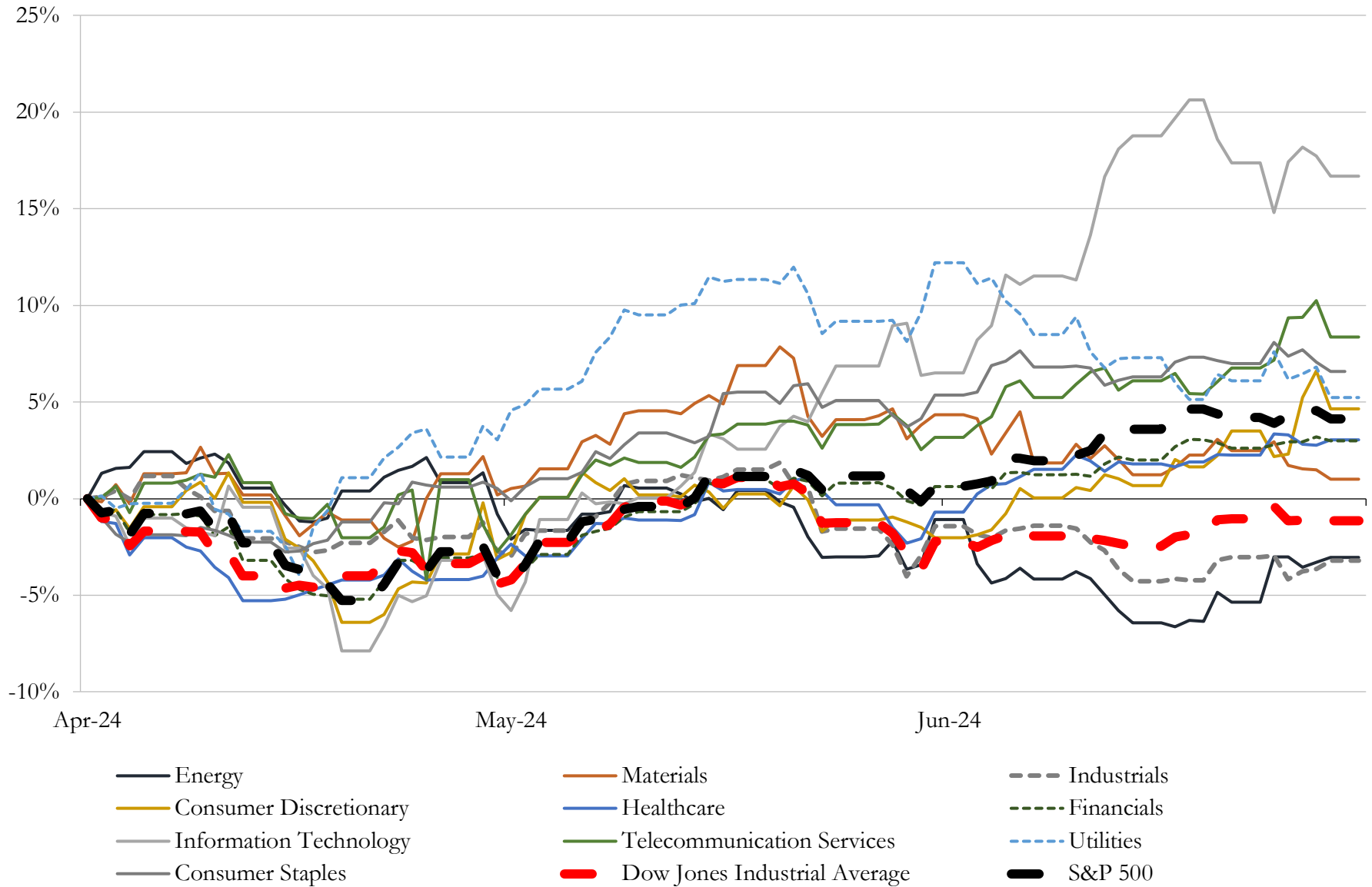
(USD in millions)

Close Date	Target	Acquirer	Implied TEV
May-24	Pioneer Natural Resources Company	Exxon Mobil Corporation	\$65,325
Sep-23	Magellan Midstream Partners, L.P.	ONEOK, Inc.	\$18,938
Aug-23	PDC Energy, Inc.	Chevron Corporation	\$7,724
Nov-23	Crestwood Equity Partners LP	Energy Transfer LP	\$7,402
May-24	NuStar Energy L.P.	Sunoco LP	\$7,396
Nov-23	Denbury Inc.	Exxon Mobil Corporation	\$5,194
Apr-24	Callon Petroleum Company	APA Corporation	\$4,572
Nov-23	Earthstone Energy, Inc.	Permian Resources Corporation	\$4,487
Dec-23	Holly Energy Partners, L.P.	HF Sinclair Corporation	\$4,438
Dec-23	Rockcliff Energy LLC	TG Natural Resources LLC	\$2,700
Aug-23	Hibernia Energy III, LLC/Hibernia Energy III-B, LLC	Civitas Resources, Inc.	\$2,169
Jan-24	Certain oil and gas assets in the Midland basin in Texas of Vencer Energy,	Civitas Resources, Inc.	\$2,087
Jan-24	Portfolio of natural gas storage assets of Hartree Partners LP	The Williams Companies, Inc.	\$1,950
Mar-24	QuarterNorth Energy Inc.	Talos Energy Inc.	\$1,552
Aug-23	Novo Oil & Gas Holdings, LLC	Earthstone Energy Holdings, LLC	\$1,500
Nov-23	Rocky Mountain Midstream LLC	The Williams Companies, Inc.	\$1,408
Aug-23	South Texas Gateway Terminal LLC	Gibson Energy Inc.	\$1,100
Nov-23	Certain Mineral And Royalty Interests	Viper Energy Partners LLC	\$1,006
Nov-23	Pivotal Utility Holdings, Inc.	Chesapeake Utilities Corporation	\$956
Apr-24	204 gas stations and convenience stores of Sunoco LP	7-Eleven, Inc.	\$950
Oct-23	Meritage Midstream Services II, LLC	Western Midstream Partners, LP	\$847
Jun-24	Durango Permian LLC	Kinetik Holdings Inc.	\$843
Dec-23	Oil and Gas Properties, Rights and Related Assets Located in Blaine, Caddo,	Mach Natural Resources LP	\$815
Nov-23	Eagle Ford asset located in Dimmit and Webb counties	Swift Energy Operating, LLC	\$750
Jul-23	Callon (Eagle Ford) LLC	Ridgemar Energy Operating, LLC	\$700
Mar-24	Summit Midstream Utica, LLC	MarkWest Utica Operating Company, LLC	\$625
Nov-23	Cureton Front Range LLC	Williams Field Services Group, LLC	\$560
Sep-23	LongPoint Minerals, LLC	Kimbell Royalty Operating, LLC	\$455
Mar-24	Permian Basin proppant production assets and North American logistics	Atlas Sand Company, LLC	\$440
Oct-23	North Dakota Assets of Crescent Point Energy Corp.	N/A	\$433

Source: Capital IQ

5 Change in Market Capitalization by Sector

Last Three (3) Months as of June 30, 2024

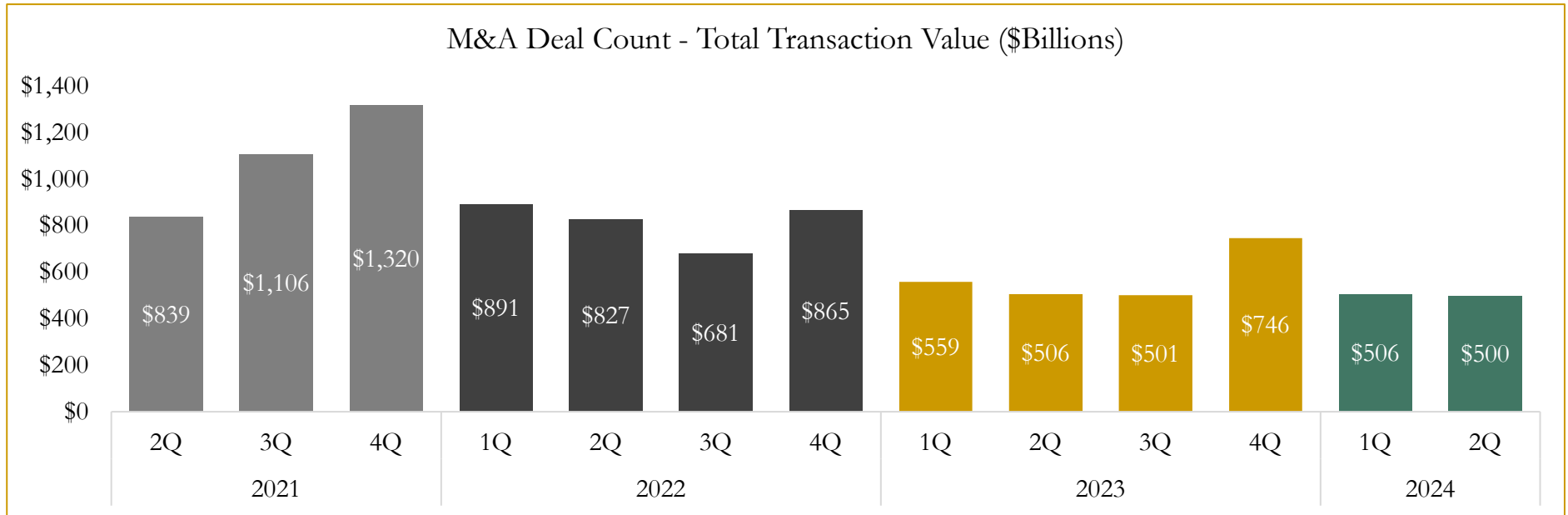
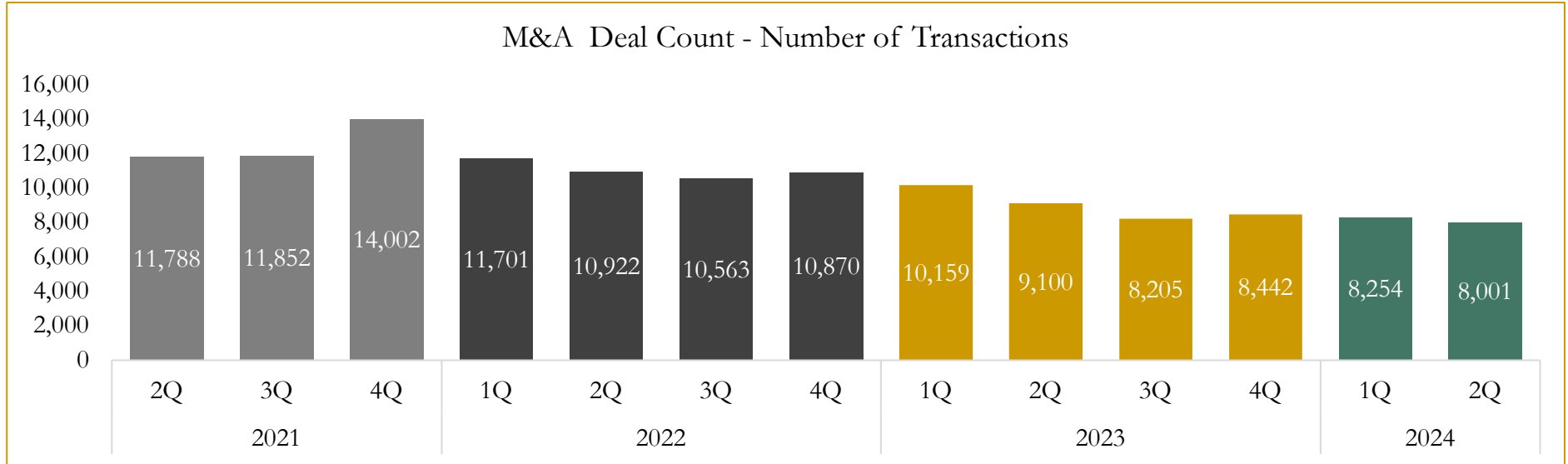


Source: Capital IQ

6

M&A Deal Flow Statistics

Last Three (3) Years as of June 30, 2024



Source: Capital IQ

Houlihan Capital is a leading, solutions-driven valuation, financial advisory and investment banking firm. We pride ourselves on being thought leaders in an ever-changing landscape.

Houlihan Capital is SOC-compliant, a FINRA and SIPC member and committed to the highest levels of professional ethics and standards.

Valuation & Financial Advisory

- **Portfolio Valuation (ASC 820)**
- **Complex & Illiquid Securities (Level 3)**
- **Cryptoasset /Blockchain Valuations**
 - Locked Token Valuations
- **Enterprise Valuations**
- **Fairness & Solvency Opinions**
 - SPAC Fairness
- **Estate & Gift Valuations**
- **Purchase Price Allocation (ASC 805)**
- **Goodwill Impairment Testing (ASC 350)**
- **Stock-based Compensation (ASC 718, IRC 409A)**

Investment Banking

- **Mergers & Acquisitions**
 - Sell-Side Advisory
 - Sale of Minority Ownership Positions
 - Leveraged Buyouts
 - Majority Recapitalizations
 - Corporate Divestitures
- **Corporate Financial Services**
 - Financial Modeling
 - Investor Presentation
 - Valuation Analysis
 - Strategic Advisory

For questions or inquiries regarding our services, please contact:

info@houlihancapital.com